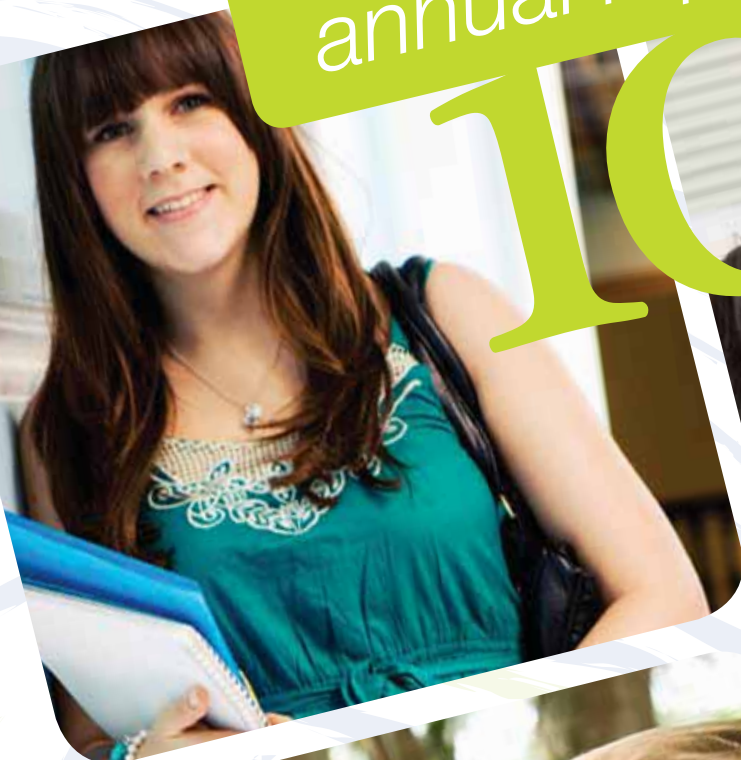
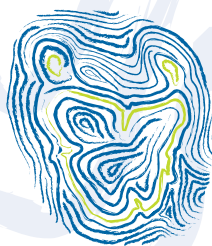


annual report

10



making a difference in our community



**Tasmanian
Community Fund**



Grant Categories

Community Welfare

Cultural and Arts

Economic Development and Employment

Education

Environment

Health

Regional Development

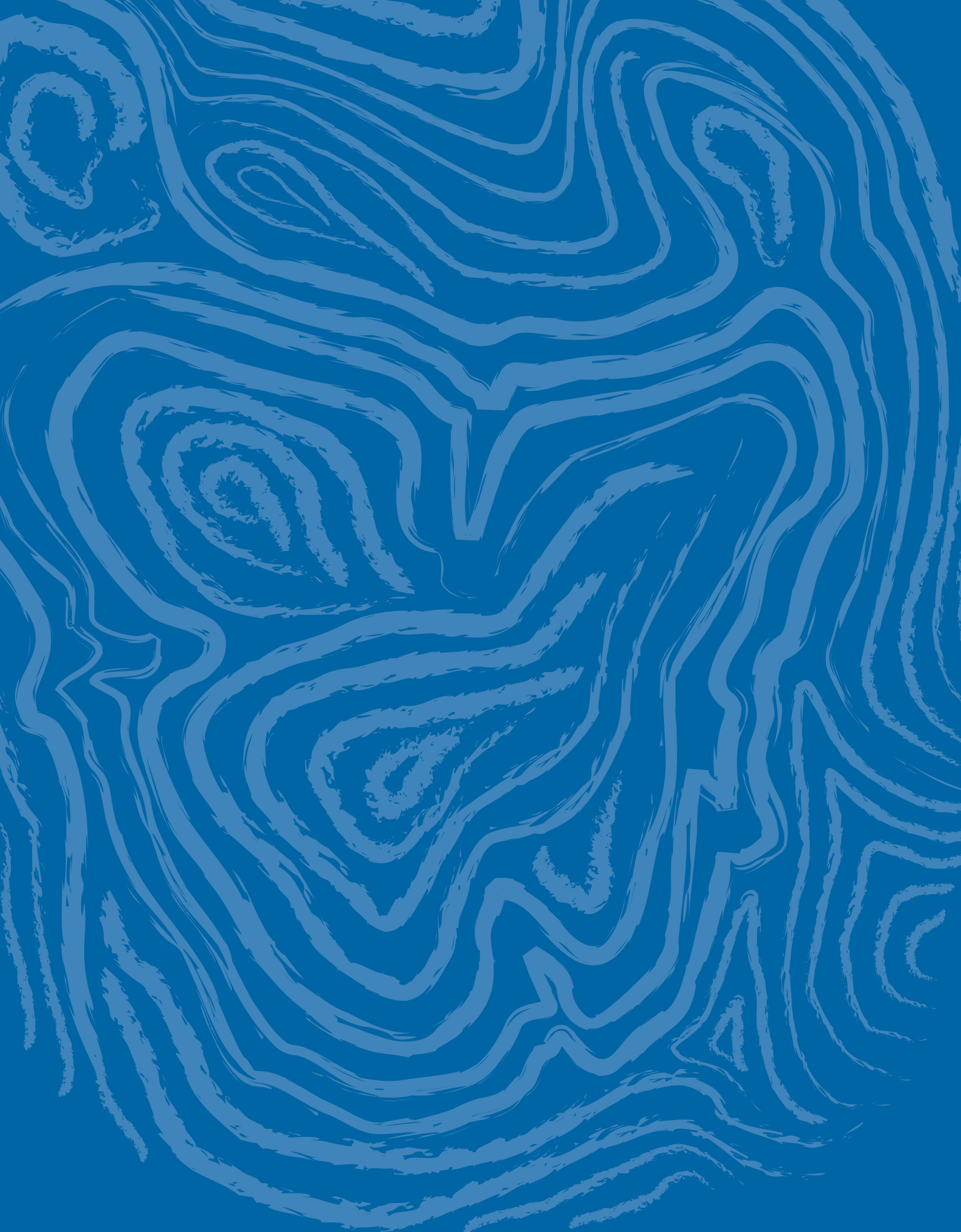
Religion

Sporting and Recreation

Youth

Contents

| | |
|--|----|
| Letter to the Minister | 3 |
| Chairwoman's Message | 6 |
| Executive Officer's Report | 7 |
| Reflections from the former Chairman | 9 |
| Grant Rounds | 11 |
| <i>Building Tasmania as the Learning Community - Round 2</i> | 13 |
| Grant Round 19 | 14 |
| Grant Round 20 | 19 |
| Background to the Tasmanian Community Fund | 27 |
| Applying for a Grant | 28 |
| Tasmanian Community Fund Governance | 29 |
| Financial Statements for the year ended 30 June 2010 | 37 |
| Auditor's Report | 49 |
| Tasmanian Community Fund - by the numbers | 52 |
| Schedule of Grant Payments | 57 |



Helping the community make its mark on Tasmania.



Hon Nick McKim MP
Minister for Community Development
Parliament House
HOBART TAS 7000

Dear Minister

I am pleased to provide the annual report of the Tasmanian Community Fund for the year ending 30 June 2010 for presentation to Parliament.

This report is submitted in accordance with Section 11 of the *Tasmanian Community Fund Act 2005*, and marks the conclusion of the tenth year of operation of the Fund.

To reflect the diversity of grants awarded by the Board, we select a different theme for each year's annual report. In this report, you will see a number of highlighted projects supporting education in many sectors of the community - in the early years, school-aged children, young adults, Tasmanians with a disability and older Tasmanians. Since 2000, the Board has allocated more than \$7 million to projects with a focus on improving the skills of many Tasmanians.

The Board, staff and I look forward to continuing to support many organisations making a difference in the community.

Yours sincerely

Lynn Mason
CHAIRWOMAN

4 October 2010

GPO Box 1350, Hobart, Tasmania 7001
Telephone (03) 6233 2800 (03) 6233 2920
Email admin@tascomfund.org
Internet www.tascomfund.org



Helping the community make its mark on Tasmania.

HIGHLIGHTS 2009-2010

- * Celebrated ten years in the community and the allocation of \$50 million in funding;
- * Awarded \$4.81 million to 186 projects in two general grant rounds;
- * Awarded \$1.3 million to eight projects in the second round of our Building Tasmania as the Learning Community targeted round;
- * Exhibited at Agfest for the first time, winning an exhibitor's award; and
- * Welcomed the appointments of a new Chair and three new Board members.

Chairwoman's Message

During the year, the Board allocated \$4.8 million in two general grant rounds. The successful applicants ranged from the Anglican Parish of Launceston South to the Zeehan Neighbourhood Centre, with projects from Nubeena to Riana, King Island to Maatsuyker.

In addition to general grant funding, the Board awarded \$1.3 million to eight projects in the second round of its funding strategy to support adult and family literacy. These projects included \$345 351 to meenah mienne for a project to improve literacy for Tasmanian Aborigines, and \$97 500 to the Independent Living Centre to assist its clients with disabilities to meet their complex learning needs.

Community engagement

The Fund keeps the Tasmanian community informed of its activities through this report, our website and newsletters. The staff and Board members also conduct a number of community forums throughout the year, where local people are encouraged to attend an informal gathering to learn more about the Fund and how to apply successfully for grants. These sessions have proved very popular and usually lead to an influx of applications from those communities. During the past year, community forums and workshops have been conducted in Launceston, Hobart, Burnie, Queenstown and Ulverstone.

In 2010, the Fund exhibited at Agfest for the first time, with Board members and staff on hand to provide information to the public. We were delighted to be awarded a prize for Best Exhibitor, Trades Expo. More importantly, we were able to make contact informally with many Tasmanians and tell them about the Fund.

Board membership

There have been a number of changes to the membership of the Board this year. Gerald Loughran retired after chairing the Board since its inception in 2000, having given nine years of unstinting service to the Fund. At the same time, Joan Walters also retired. Sadly, Becky Shelley was not able to seek reappointment due to a change in her personal circumstances. Hence the Board welcomed three new members early in 2010 – Peter Kay and Nell Kuilenburg from the south of the State, and Sheryl Thomas from Launceston. All Board members were pleased with the reappointment of Catherine Fernon, from the northwest, and the continuing representation by Ron Sanderson, from the south.



I am honoured to have been appointed as Chair of the Board from December 2009.

Given the changes in Board membership, it is appropriate to note the continuing excellent service provided to the Fund and to the Tasmanian community by the Principal Executive Officer, Mark Green, and the Administrative Officer Melissa Gunn.

In the forthcoming year, Board members will maintain close links with the community and with all levels of government, and will continue to provide grants across a broad range of community projects, making a difference to the lives of ordinary Tasmanians.

Lynn Mason
CHAIRWOMAN

Fund staff Mark Green and Melissa Gunn and Chairwoman Lynn Mason at Agfest

Executive Officer's Report

Compiling the annual report is an opportunity to consider how much has been achieved during the past year and since the Fund commenced in 2000.

In simple numbers, the Board has now allocated over \$50 million to almost 1 400 projects in all parts of the State. That is a significant amount of funds provided to improve our social, environmental and economic well-being.

In 2009-10, the Board allocated 186 general grants, the second highest number after allocating 200 in the previous year, and eight targeted grants in its adult and family literacy funding round. In the last two years, the number of grants has been more than double the number allocated in the first two years of the Fund's operations.

After a slow decline in the number of applications over the first eight years, the last two years has also seen a significant increase in the number of applications received. We attribute the increase to two main factors – the introduction of a small grants stream to encourage more applications from typically smaller community groups; and an increase in activities promoting the Fund's operations. While outside the reporting period, it is interesting to see that the increase in applications has continued into the first round in 2010-11.

The introduction of the small grant stream has also influenced the proportion of grants awarded for amounts of \$10 000 or less. Prior to the new stream, around one-third of the grants were awarded for small amounts; for the last two years, it is over half the grants. I'm sure it is encouraging for smaller organisations to see that the Board places a high value on their contribution to the community.

There were a number of changes to the Board during the year, and I would like to acknowledge the commitment, professionalism and knowledge displayed by all members over that period, whether they were ongoing, newly appointed or ceasing their appointment. The former Chairman and I spent many hours discussing ideas for continuing the Fund's maturity, some which have already been achieved and some for further consideration under new Chairwoman Lynn Mason's stewardship.

I would also like to acknowledge the contribution to the achievements of the Fund by my colleague, Melissa Gunn, particularly in continuing to streamline our processes and managing the large volume of grant applications, grant deeds and payments.

While the community tells us that most of what we do, we do very well, I'm sure the next year will see the Fund set even higher standards for itself.



Mark Green
PRINCIPAL EXECUTIVE OFFICER

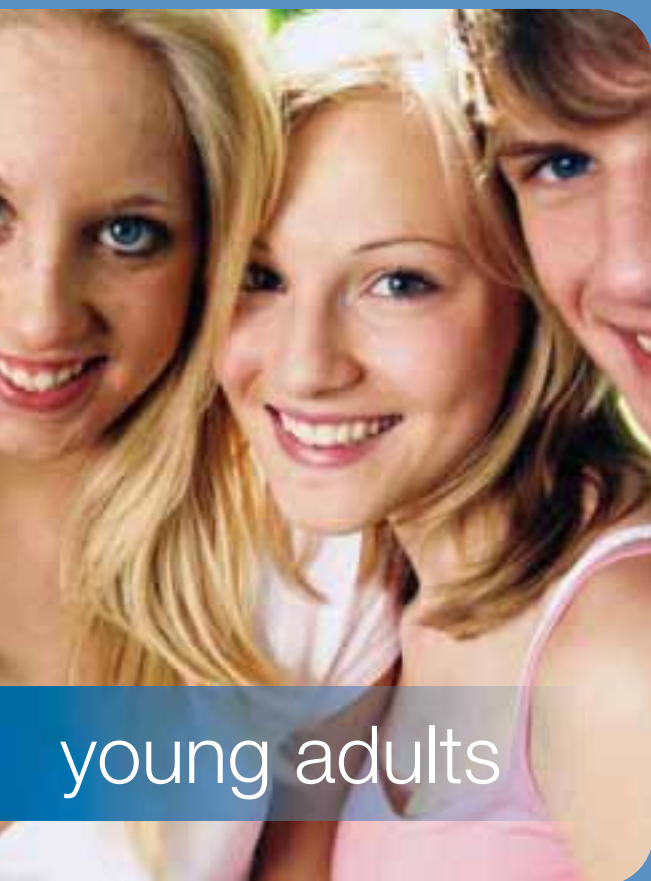


environment

Bookend Trust

The Bookend Trust seeks to inspire students and the community with the potential of building positive and effective environmental careers. The program aims to boost environmental awareness and to provide educational opportunities that might not otherwise be available.

The Fund provided \$9 000 for the development of a DVD to present career options in environmental management to school and university students through presentation of their own work to peers and the community. Copies are available from the Trust.



young adults

Lead Inspire Grow

Lead Inspire Grow is an innovative grass roots initiative to support young people to develop leadership skills, build confidence and increase self-esteem.

This joint project between the George Town and West Tamar Councils is designed to give young people in rural and remote communities the opportunity to experience challenges, build team-work and leadership skills and become confident communicators. Participants bring these skills back to their communities and become peer leaders through regional youth programs.

The Fund awarded \$18 960 towards supporting the program.

Reflections from the former Chairman

It gives me great pleasure to reflect on a most satisfying involvement with the Tasmanian Community Fund. I would like to congratulate Lynn on assuming the role of Chair and wish the Board and staff well as they enable Tasmanians to make a difference through the activities of the Fund.

There were many issues to be considered when the Trust Bank was sold, but a major focus was how best to utilise the funds realised from the sale. The Bank's assets had been created by an amalgam of the many financial institutions throughout the State over 150 years. Many Tasmanians had used the banking services of those institutions over those years, and it was understood that those proceeds must be used for the perpetual advantage of all Tasmanians.

To provide the best result for the State, the final outcome unanimously agreed by Parliament resulted in the sale proceeds retiring a proportion of State debt, the creation of the Tasmanian Community Fund and an annual indexed appropriation for the Fund to distribute to community projects. The legislation guaranteed independence from the government of the day.

This important principle of independence allows the Board to make all its funding decisions without fear or political favour. This principle has been supported from the outset by all sides of politics and by the community, and is considered a major strength of the Fund.

The landscape for philanthropy and community funding bodies is continually evolving. The Fund has worked hard to remain open to community needs and aspirations, and to be a leader in the sector. A challenge facing all philanthropic bodies is the competing needs of the many emerging opportunities and new funding applications, against the need for longer-term funding. Supporting a new project until it is operating with stability often takes longer than one or two years. It may sometimes be appropriate for philanthropic bodies to consider longer-term funding, without of course allowing the applicant organisation to become reliant.

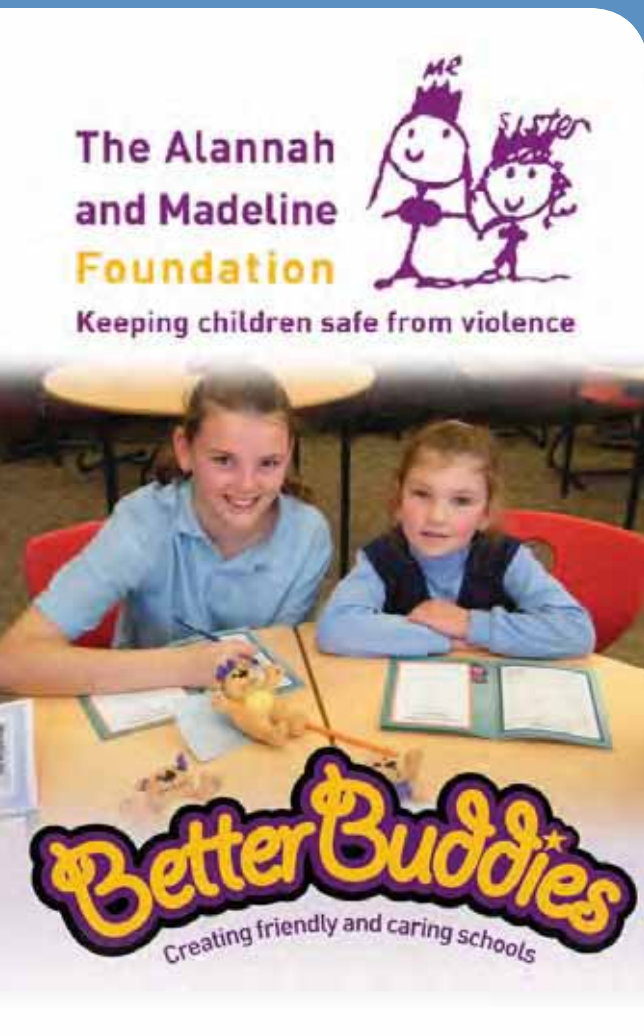
Early in the life of the Fund, the Board recognised an opportunity to set aside funds for specific purposes, such as the recent multi-year funding to improve adult and family literacy. This is an example of how a longer-term focus can make a significant difference.

Through my involvement with the Fund, I have learnt so much and become much more acutely aware of community needs throughout Tasmania. I have been humbled and inspired by so many dedicated Tasmanians who do so much with their voluntary activity and who have expressed joy and appreciation for assistance provided by the TCF funding. I have spent countless hours reading thousand of applications and often wished almost all of them could be satisfied.

I express my sincere appreciation to the Tasmanian community and to each of the dedicated staff and Board members who have served the Fund during these formative years.



Gerald Loughran
CHAIRMAN 2000 - 2009



social skills



play

Better Buddies

Better Buddies is an initiative of The Alannah and Madeline Foundation, building friendly and caring school communities where bullying is reduced. Better Buddies introduces or enhances buddy systems in primary schools by building strong, connected relationships between the students in their first and last years of school.

The Fund provided \$22 000 for the program to operate in a number of Tasmanian primary schools.

Better Buddies @ Lindisfarne North Primary

Under the program, every early childhood class is 'buddied' with another middle or upper primary class. The classes meet at regular intervals and engage in a range of activities from art/craft work to reading and numeracy challenges. Each fortnight the school holds a Buddy Assembly with selected students from the buddy classes coordinating and hosting the event.

The school experiences very little serious bullying activity due to its diligence with prevention programs and management of incidents.

The younger buddies feel valued, safe and more connected to their school while older buddies become important role models with a renewed sense of responsibility and leadership. These behaviours continue in the playground during break times and have a positive influence on negative behaviours including bullying. Committed staff and supportive parents help too!

Playgroup Tasmania Toy Express

Playgroup Tasmania works with families and communities to support an accessible network of playgroup services. Playgroup Tasmania promotes playgroups as an opportunity for families to interact, grow, share experiences and learn through play.

The Fund awarded \$70 075 to engage in mobile playgroups and a toy express program around the north of the State.

Grant Rounds

The TCF has held two general grant rounds each year, in February - March and July - August. From time to time, we also hold targeted funding rounds. These rounds maximise the impact of funding by channelling investment into fewer, larger initiatives that have the capacity to achieve even greater benefits to the community.

The four targeted rounds have been:

- *Early Childhood Intervention and Prevention for At-Risk Children* - \$1 million for three projects;
- *Promotion and Conservation of Tasmania's Cultural Heritage* - \$2 million for 31 projects; and
- *Tasmanian Aboriginal Heritage* - \$280 000 for 7 projects.
- *Building Tasmania as the Learning Community* – with a focus on adult and family literacy
 - \$2.8 million for nine projects in round one; and
 - \$1.3 million for eight projects in round two.

Grant Round Summary 2009-10:

The table below sets out the details for the grant rounds this year:

| | grant round 19 2009 | Building Tasmania as the Learning Community 2009 | grant round 20 2010 |
|--|---|--|---|
| grant round opened | 18 July | 3 October | 13 February |
| grant round closed | 27 August | 5 November | 24 March |
| number of applications received | 232 | 18 | 247 |
| funding requested | \$9.55 million | \$3.16 million | \$8.99 million |
| grants approved | 84 (36% of applications) | 8 (44% of applicants) | 102 (41% of applications) |
| funds approved | \$2.14 million (22% of funding requested) | \$1.30 million (41% of funding requested) | \$2.67 million (30% of funding requested) |
| notification of assessment decision | 4 November | 7 December | 3 June |

Details of each funded project are provided on the following pages.



information
technology

OPEN - Older Person's Electronic Network

OPEN provides low cost computer training for all seniors. It is run in a relaxed, informal setting where seniors can meet, socialise and learn. Monthly meetings are held at Studio Works, Launceston.

Since it commenced in 2001, OPEN has helped hundreds of older Tasmanians develop their computing skills to enhance their lives.

The Fund awarded \$21 535 to OPEN for computers and equipment to support their training.



mentoring

MadWheels

The MadWheels Program currently provides vehicles at no cost to disadvantaged people in the Launceston community. Volunteers work together in the evenings to repair and refurbish donated vehicles and then present them to families that have a demonstrated need. The program has given away an average of 9-12 cars per year.

At the same time, the MadWheels Program provides a mentoring and teaching environment to those who wish to be involved in areas such as automotive mechanics, panel beating and paintwork training.

The program works closely with other service providers, government agencies and education facilities such as Richmond Fellowship, Youth Justice, Polytechnics and Mission Australia.

The Fund has provided \$282 000 in two grants to Madwheels to support their programs through fitting out their workshops and purchasing materials.

Building Tasmania as the Learning Community - Round 2

In 2008, the Board considered that it could make a substantial difference by focusing on adult and family literacy.

Two funding streams were supported in May 2009.

In the second round, awarded in December 2009, the Board allocated \$1.3 million to eight projects. Those projects are:

AURORA Disability Services \$19 448

To provide community learning to people with disabilities and maintaining an ongoing literacy program that incorporates private tutoring in basic education, specifically designed for personal achievement.

Centacare Tasmania \$254 536

To build individual literacy and numeracy skills through negotiated, practical learning opportunities, both individually and in groups; to improve partnerships with mainstream learning services for marginalised families; and to offer a training package and work kit for service providers throughout Tasmania.

Glenorchy City Council \$195 480

To work with young mothers aged 17-25 and their children at a local community level to develop their skills to participate in employment and education as well as in social networks and community life.

Independent Living Centre Tasmania Inc \$97 500

To support clients with complex needs to learn to use new software and technology, including techniques to achieve specific learning goals.

King Island Council (on behalf of Phoenix Community House) \$8 240

To assemble family literacy backpacks for King Island residents and families. The backpacks will contain a variety of literacy materials and will assist the families to further develop their skills and knowledge.

meenah mienne \$345 351

To improve literacy and numeracy levels of at-risk Aboriginal youth, their mentors and families. This is achieved through an educationally robust and culturally appropriate program of individualised learning pathways based on the real-life context of establishing a community-led, sustainable arts business.

Tasmanian Regional Arts \$28 403

To fund 'The Story Exchange', which supports adults with low literacy. Using story as a process, the exchange will provide an opportunity for participants to tell stories about local and personal issues.

The Smith Family \$353 612

To establish and maintain family learning clubs in eight disadvantaged Tasmania communities, engaging up to 900 children and their parents.

✓ The Tasmanian Community Fund was established from the proceeds from the sale of a community asset - the Trust Bank.

✓ The first funding round was in 2000.



General Grant Rounds

Grant Round 19

The Alannah and Madeline Foundation \$22 000

To create caring and friendly communities by implementing the Better Buddies framework in schools around Tasmania, to reduce bullying and other negative behaviour.

All Saints Church, Hobart \$9 990

To conserve the nativity mural in the chapel at All Saints Church.

Anglicare Tasmania Inc \$88 840

To establish a sustainable peer mentoring network involving partnerships among local community groups and primary and secondary schools in the Clarence Plains and Risdon areas.

Appin Hall Children's Foundation \$7 400

To carry out essential road upgrades at the respite centre to provide suitable access to all site areas and maintain safety standards for user groups.

Archdiocese of Tasmania (on behalf of St John's Parish, Richmond) \$13 557

To conserve a heritage stained glass window in danger of ruin, and repair the adjacent stonework and roof.

Bicheno Community Development Association (on behalf of Bicheno Community Church Committee) \$3 888.50

To repair and paint the exterior weatherboards and roof of the Bicheno Community Church.

Blue Lagoon Christian Camp and Conference Centre \$47 990

To perform kitchen renovations at the Blue Lagoon Christian Camp, Dodges Ferry, to ensure it meets with current standards.

Bridgewater Police and Citizens Youth Club \$53 120

To provide a youth drop-in service after school encompassing structured activities, referral and support for at-risk youth.

C3 Church \$7 823

To purchase a portable entertainment trailer with LCD screens, gaming consoles and a pullout barbecue to be used as a free service for connecting youth in Hobart.

Calvary Health Care Tasmania \$8 570

To provide an age-appropriate fun and attractive space for young people who are admitted to the Melwood Palliative Care Unit.

Central Highlands Council (on behalf of Ellendale Hall Committee) \$33 954.55

To provide a commercial kitchen in the Ellendale Hall for community use.

Circular Head Rural Health Services Inc (on behalf of Smithton Community Group/Playgroup in the Park) \$1 930

To provide kitchen equipment to facilitate cooking demonstrations and nutrition classes.

Circular Head Rural Health Services Inc (on behalf of Smithton Community Group/Playgroup in the Park) \$1 700

To provide bicycles and tricycles for small children and resources to teach safe cycling.

Channel Heritage Museum \$1 608

To record the oral histories of Channel residents and 1950s Dutch migrants, including the digitisation of the museum collection to allow wider community access.

Choir of High Hopes Hobart Inc \$4 500

To hold a weekend camp for 50 choir members, as a stepping stone to touring the choir.

The Country Women's Association in Tasmania Inc (on behalf of The Trustees of the Bothwell Sunday School Building) \$19 200

To repair damage caused by wind at the CWA Building in Bothwell, including strengthening the roof structure.

Create Foundation \$58 000

To implement an empowerment program for young people leaving care to learn skills to be functioning community members, and to support job readiness and personal development.

Cremorne Bowls Club (on behalf of Pipeclay Playgroup) \$5 000

To set up a weekly playgroup for families and carers of children 0 - 5 years living in the Cremorne, Sandford and Clifton Beach area.

Derwent Valley Council (on behalf of Derwent Valley Youth Future Action Team) \$36 500

To enable young people of the Derwent Valley to showcase their capacity and participate in developing solutions to issues within their community.

Grant withdrawn on advice of recipient.

Diabetes Tasmania \$3 150

To facilitate a weekend retreat inviting all young adults leaders of Diabetes Tasmania's summer camps for teenagers with Type 1 diabetes.

Dodges Artisans and Farmers Market Inc \$1 994

To purchase basic equipment for the market to ensure its ongoing sustainability and growth.

Eaglehawk Neck Community Hall Association Inc \$10 000

To rebuild and refurbish the Eaglehawk Neck Community Hall's kitchen to meet basic health and safety standards.

Evandale History Society Inc \$18 710

To build an interpretive model of the convict-built water scheme in Evandale designed to supply water to Launceston.

Fusion Australia Ltd \$99 955

To establish Tasmania's first world-class public access glass blowing facility and artistic retreat centre in Poatina.

Girl Guides Tasmania \$23 063.63

To provide a safe and usable kitchen for Girl Guides and the various community groups who use the Devonport Guide Hall.

Girl Guides Tasmania \$3 431.82

To install stainless steel mesh into guttering, install ventilation in the storeroom and paint the ceiling in the main room to help prevent dampness within the HC Abbott Guide Hall, Launceston.

Glenorchy City Council \$9 550

To engage a large and varied group of young people in Hobart's northern suburbs in the creation and presentation of a temporary public art trail around the commercial precinct of Moonah, including the Moonah Arts Centre.

Green Ponds Progress Association \$14 760

To prepare and install interpretive panels, a large town map and identify historic places in Kempton.

Hobart Women's Health Centre \$5 566

To provide support and encouragement to women who have experienced mastectomy, lumpectomy or breast reduction surgery.

Huon Valley Council \$3 220

To offer a safe, friendly space for young people to express themselves and help develop their music and social skills. Specifically, the grant funding will be used towards an artist salary, catering and recording equipment hire.

King Island Council (on behalf of King Island Historical Society) \$7 565

To preserve the King Island Museum tearooms by undertaking repairs, including renewing weatherboards, guttering and painting.

L'arche Hobart – Beni Abbes Community Inc \$18 049.85

To provide furniture and basic needs for young women with intellectual disabilities, enabling them to live independently.

Langford Support Services Inc \$28 700

To renovate the two bedroom unit located at New Town to provide affordable and safe accommodation for parents with disabilities or mental illness.

Lions Club of Bicheno \$21 690

To construct a permanent all-weather stage in the Bicheno Lions Park to create a venue suitable for outdoor community events.

Lions Club of Penguin Inc \$9 600

To implement an after-school activities program pilot by providing activities that encourage young people to engage with their community.

The Living Boat Trust Inc \$9 795

To build an external veranda on the northern and western sides of the Living Boat Trust, Franklin, with a community workshop and a shower inside.

Longford Fishing Club Inc \$18 590

To renovate the Longford Fishing Club kitchen to create a modern and safe facility for use by a variety of clubs and associations.

Lorinna Residents and Ratepayers Association Inc \$55 187.50

To surface an existing multi-purpose sports court 34m x 18m marked out for tennis, basketball, volleyball and mini-soccer.

Maritime Museum of Tasmania Inc \$5 900

To produce a looping video display interpreting Tasmanian shipbuilding from early European settlement until the current advanced shipbuilding techniques.

Montagu Community Living Inc \$4 425

To provide access to internet resources to residents and an intranet for staff and residents to support communications and skill development.

National Heart Foundation \$47 545

To extend the Heartmoves exercise programs into rural and isolated communities.

National Trust Australia (on behalf of the Trustees of the Launceston Synagogue) \$9 300

To repair and protect the Synagogue's historic stained glass windows and document the furnishings within the building to enable their conservation and interpretation.

New Horizons Club \$6 375

To undertake critical repairs to a wheelchair trailer which enables the transportation of wheelchairs into school communities for students with disability to participate more easily in sporting activities.

✓ The Fund's Board is autonomous in determining the Fund's strategic direction and grant allocation.

✓ The Board members must perform their functions in the best interests of the Tasmanian community.





play centres

Penguin Play Centre

The Centre is the only not-for-profit play centre in Penguin. The Centre provides sessions for children aged 3-5 years, and play group sessions for children 0-5 years to learn social skills and have fun. The centre is also available for hire for children's parties.

Fundraising is needed for improvements to facilities and to purchase new equipment.

In 2009, the Fund awarded the Centre a grant of \$6 331 to resurface their outdoor concrete play area to make it safer and meet registration requirements.

The resurfaced area can now be used safely. The centre has painted a bike track on the area so that the children can ride with ease and learn basic road safety. The centre used some local fundraising from a garage sale to purchase some paint, bikes and road signs to add to the grant.



young mothers

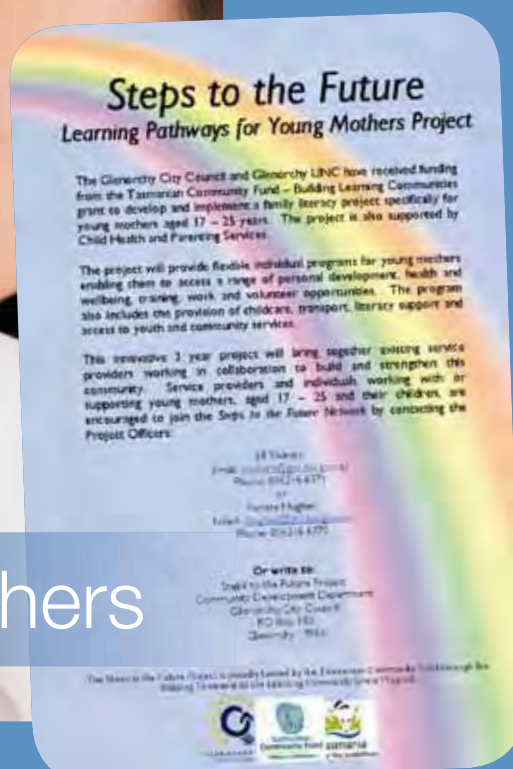
Steps to the future

Steps to the Future is a program run through Glenorchy City Council. The program works with young mothers aged 17-25 and their children at a local community level to develop their skills to participate in employment and education as well as in social networks and community life.

The program has a number of other partners including Glenorchy LINC, Child Health and Parenting Services and youth organisations.

The Fund awarded \$195 480 in our targeted funding round for adult and family literacy for the program to run over three years. At the end of that period, there will be a formal evaluation so that other councils and community organisations can learn from the achievements and hurdles.

Young mums interested in the program can contact Glenorchy City Council.



Northern Midlands Council (on behalf of Campbell Town Swimming Committee)
\$1 288

To purchase equipment for use at youth swim programs at the Campbell Town swimming pool.

Northern Tasmanian Netball Association
\$45 602

To resurface the Northern Tasmanian Netball Association's netball courts and upgrade the lighting.

North West Motorcycle Riders Club
\$3 850

To purchase equipment for their clubhouse.

Oakdale Services Tasmania
\$17 890

To establish a Japanese-style contemplation garden comprising a remembrance wall, pagoda featuring memory book, seating, trees, water feature, entry arch, and view of Mount Wellington through a Moon Gate.

Okines Community House
\$2 345.52

To purchase office furniture and equipment.

Paraquad Association of Tasmania
\$8 030

To hold a competition for youth who are in tertiary education to undertake and develop a short film or DVD, posters, advertisements, logo, slogans, calendars, plays and stories relating to alcohol, drugs, driving and the associated consequences.

The Punchbowl Centre
\$9 990

To purchase 100 chairs for use at the Punchbowl Christian Centre.

The Redwater Creek Steam and Heritage Society
\$35 454.54

To supply and construct a 20m x 18m shed to provide display space for vintage agricultural machinery.

Richmond Fellowship of Tasmania Inc
\$2 500

To purchase self help workbooks for people with particular symptoms of mental illnesses to assist them in their personal recovery.

The Rock Community Church Inc
\$5 487

To purchase gym equipment for 'The Rock' youth group.

The Salvation Army Tasmania Property Trust
\$225 000

To provide an innovative, interactive, multi-media literacy and numeracy project including a literacy assessment tool, resource tool-kit and strategies to engage disadvantaged families to improve literacy.

Scouts Australia, Tasmanian Branch - Tarooma Scout Group
\$14 700

To upgrade the Tarooma Scout hall to provide a safe environment for users.

Secondbite
\$41 385

To hire and purchase the necessary equipment to enable fresh food to be obtained and redistributed to relief agencies within the community.

Self Help Workshop Inc
\$9 424

To establish a kitchen garden to enhance the life skills of disabled employees and provide produce for the canteen.

The Smith Family
\$99 800

To provide families with practical tools and skills around self management of health as well as building social connection for families not engaged with community structures.

Sorell Men's Shed and Heritage Museum Inc
\$2 920

To manufacture 40 Cape Cod and canvas deck chairs for community and disabled groups attending the men's shed.

Southern Coastcare Association of Tasmania Inc
\$32 625

To identify priority coastal sites and undertake control work to address the impact of feral oysters on the environment, recreation and public amenity.

Southern Midlands Council
\$189 500

To establish a heritage conservation and restoration centre built on an education and training model that provides employment opportunities.

St Vincent de Paul Society (Tasmania) Inc
\$30 518.19

To supply and install heating/air conditioning at Marillac House to provide comfortable accommodation supporting patients and their carers travelling to Launceston.

Tandara Lodge Community Care Inc (on behalf of Sheffield Community Garden)
\$15 258.15

To create a community garden that is a focal point for participation, interaction socialisation and skill sharing in the community.

Tasmanian Ballet Company Ltd
\$46 376

To present the classical ballet "Nutcracker" in conjunction with Tasmanian Ballet's community outreach program, visiting both regional and metropolitan Tasmania.

Tasmanian Bushland Garden
\$2 440

To purchase four picnic tables and bench seating to complete the community-funded picnic shelter and public toilet building at the garden in Buckland.

Tasmanian Environment Centre (Sustainable Living Tasmania)
\$25 774

To pilot a mentoring program to assist Tasmanians with a disability to reduce their home electricity use and begin to produce their own home grown food.

Tasmanian Landcare Association
\$7 922.73

To purchase basic office equipment resources for staff to provide advice, support, access to resources, volunteer services, and funding and networking opportunities.

Tasmanian Regional Arts (on behalf of Burnie Arts Council)
\$41 600

To extend the highly successful Havenview Primary strings program to include a total of four primary, one high school and the Burnie Academy.

Tasmanian Symphony Orchestra
\$90 000

To commission the manufacturing of custom-designed choir risers to complete the new acoustic treatment in the Federation Concert hall for the benefit of Hobart choral singers.

University of Tasmania (School of History and Classics, Faculty of Arts)
\$50 000

To provide professional development opportunities for museum volunteers with cataloguing, collection management, database skills, working with new media, collection/history preservation and promoting local history.

University of Tasmania (represented by Menzies Research Institute)
\$31 981

To develop the childhood health orientation index to measure school enjoyment, performance and health attitudes.

University of Tasmania (represented by Menzies Research Institute)
\$49 434

To develop a Tasmanian genealogical and genetic resource for use in familial cancer research programs.

Van Diemen Light Railway Society Inc (Don River Railway)
\$30 000

To restore and preserve a heritage railway carriage that was converted for use by HRH The Prince of Wales during his State visit in 1921.

Westbury Community Health and Day Care Committee Inc (on behalf of From the Heart to the Jewel)
\$4 330

To pay a coordinator and installation costs for the implementation of a collaboration of artwork to be displayed at the national Regional Arts Australia conference, Launceston, August 2010.

Wildcare Inc (on behalf of Friends of Deal Island)
\$7 090.91

To continue the restoration of the Superintendent's house on Deal Island, including reconstructing the wall, windows and outer door of the back room; installation of new support beams and completion of the new roof guttering; lime washing outer walls of the building; and building protective fencing around the vegetable garden.

Wildcare Inc (on behalf of Friends of Maatsuyker Island)
\$9 300

To purchase scaffolding to provide a safe working environment for volunteers to undertake restoration work on heritage light station buildings on Maatsuyker Island.

Wildcare Inc (on behalf of Friends of Tasman Island)
\$4 000

To purchase and install three water tanks to replace the remaining old tanks at Lightkeeper's Quarter No 3, Tasman Island, now used to accommodate volunteers.

Wild Cats Gymnastics Club Inc
\$9 800

To purchase new gymnastic equipment which will result in a safer environment for members of the Wild Cats Gymnastic Club.

The Windeward Bound Trust
\$39 294.50

To replace essential safety equipment to support programs run by Windeward Bound, a sailing training vessel for young people.

Women's Community Enterprise Inc
\$1 548

To purchase and install baby change facilities at the Hobart Women's Health Centre, North Hobart.

Woodbridge Community Association
\$3 798

To continue community film screenings at Woodbridge by upgrading the projector and screen to accommodate DVD format.

Woolmers Foundation Inc
\$3 500

To undertake further interpretation of the Woolmers Estate.

Zonta Club of Devonport
\$35 112

To purchase and install a Liberty swing for use by people with limited mobility.



✓ The Board has awarded almost \$200 000 to community radio projects.

✓ The Board has assessed over 4 600 grant applications for funding, requesting over \$260 million.

✓ The 1 000th grant awarded by the Board went to The Salvation Army to fund its Parenting Partners program in the Derwent Valley.

✓ The Board has awarded almost \$550 000 to Scout and Guide groups around Tasmania for equipment purchases and facility development.

Grant Round 20

Australian Wooden Boat Festival Inc \$10 000

Under the guidance of a boat builder/tutor, disengaged students will construct four wooden boats to be launched at the Australian Wooden Boat Festival in February 2011.

Beaconsfield Mine and Heritage Centre \$135 000

To create a permanent interactive three-dimensional holographic representation of the Beaconsfield gold mine which will feature its underground workings, geology and history.

Bhutanese Community of Tasmania (North) Inc \$2 500

To support Bhutanese participation in community celebrations.

Bracknell Football Club Inc \$112 930

To redevelop the Bracknell Football Club rooms to create a multipurpose sporting, recreational and community facility for use by community groups.

Burnie Surf Life Saving Club Inc \$5 000

To purchase a fully-enclosed trailer to transport equipment for junior activities.

Carers Association of Tasmania \$14 363.43

To install a new telephone system to enable efficient carer and stakeholder communication.

Carlton Park Surf Lifesaving Club \$9 800

To purchase eight dry suits enabling the emergency search, rescue and first aid services along Carlton Beach to be expanded.

Central Coast Council (on behalf of Riana Community Centre) \$9 090

To purchase two heat pumps to replace the existing wall heaters at the Riana Community Centre.

Cerebral Palsy Tasmania \$40 000

To purchase 25 mobility splints, including peripheral additions, to offer freedom of movement for people affected with cerebral palsy.

Channel Historical and Folk Museum Association Inc \$110 000

To supply cabinets and fixtures to display documents and artefacts relating to the exploration and cultural history of the Channel district.

Clarence City Council \$10 000

To hold thirteen GREAT (Graffiti Reduction Engagement thru Art) workshops in partnership with local schools and Neighbourhood Centres.

Clarence Police and Citizens Youth Club Inc \$30 190

To resurface the basketball court in the main hall area to meet approved safety standards.

Cluster of Circular Head State Schools \$8 460

To purchase outdoor play equipment suitable for infants and toddlers in the Circular Head area.

Deloraine Agricultural and Pastoral Society Inc \$20 779

To improve the shower and toilet facilities at the Deloraine Showgrounds by connecting the sewerage to the town sewerage system.

Delta Society Australia \$1 572.73

To purchase various equipment for use by the trained volunteers assisting with therapeutic animals in the north of Tasmania.

Devonport Playcentre Playgroup Inc \$5 558

To purchase a heating/cooling unit for the children's play area to create a more comfortable and welcoming area.

Drug Education Network Inc \$23 700

To introduce a national podcast service for 16-25 year olds covering issues that allow them to make safe and healthy choices.

Edmund Rice Camps (on behalf of St Virgil's Sailing club) \$10 000

To purchase beach and road trailers and safety equipment to assist with the implementation of a structured introductory program to team sailing in the northern suburbs of greater Hobart.

Encore Theatre Company Inc \$8 955

To purchase essential equipment to support community theatre productions by Encore and their community partners.

Friends of the Patriarchs Sanctuary Inc \$4 600.30

To construct a concrete slab, erect a shelter and install an automatic barbecue at the visitors' centre, Patriarchs Sanctuary, Flinders Island.

Forcett Community Hall Committee Inc \$1 000

To purchase a public address system.

Furneaux Historical Research Association \$7 782

To purchase and install four glass and timber display cabinets and shelves for storage of artefacts from the Furneaux Islands.

Giant Steps Tasmania \$54 450

To construct a new toilet block and covered walkway which meets occupational health and safety standards.

Glamorgan Spring Bay Council \$124 550

To restore, repair, renovate and refurbish the Glamorgan Heritage Centre to house the community meeting room and the Glamorgan Spring Bay Historical Society.

GLC Centre Incorporated \$9 900

To support the TasPride Festival in November 2010.

Glenhaven Family Care Inc \$177 915

To construct a Community Service Delivery Centre accommodating Glenhaven Family Care and Camp Clayton in partnership providing current and new innovative services to the north west community.

Great Western Tiers Volunteers Association Inc \$16 575

To secure the future of YARNS, a highly valued community artwork, through textile preservation and lighting replacement.



community

Tool Program

TOOL (Training Opportunities and Options for Learning) is a not-for-profit community organisation based on the eastern shore of Hobart. Its aim is to alleviate the effects of poverty and disadvantage among youth (15-25 years old) at risk of educational disengagement, long-term unemployment and anti-social behaviour. Typically, these young people face multiple barriers to education, training and employment.

TOOL, an initiative of local community centres, works with a range of service providers in the education, employment and community sector, and with local industry, to transform the future of local at-risk young people.

TOOL is establishing and enrolling the youth in sustainable, commercially-based facilities that incorporate on-the-job training in a range of practical work skills, entrepreneurship and personal development opportunities, and facilitating them into paid and sustainable employment.

In a formal partnership with the Tasmanian Polytechnic, TOOL worked with over 50 young at-risk people in 2009, operating a small commercial vineyard and acreage at Yellow Brick Road, Old Beach.

The Fund has allocated almost \$350 000 in three grants to the program to support its activities.



adult learning

Oak Tasmania

Oak Tasmania is a leading provider of services to Tasmanians with a disability. Its services are innovative, creative, and focused on the individual needs of each person. Oak Tasmania supports the ability of each person to work and to connect with their local community, and to maintain a strong link with their families.

The Fund has provided \$55 724 for their '*Connect-ability*' program to provide alternative education and an online access centre to achieve lifelong learning and social benefit.

Greater Esk Tourism Inc
\$31 395

To restore the heritage-listed Avoca Schoolhouse to serve as a Tourism and Interpretation Centre.

Greek Orthodox Church and Benevolent Society of St George
\$20 000

To consolidate the administration and records of various auxiliary bodies of the Greek community into a single office/space, including access improvements.

H.O.P.E.S (Housing Options for People needing Extra Support) Inc
\$40 545

To set up a new common house and respite unit supporting a cooperative cluster of units for younger adults with acquired brain injury and neurological conditions.

Hobart City Church of Christ
\$9 965

To provide contemporary facilities to non-profit community groups to assist their volunteer/staff training programs.

Hobart District Nursing Services Inc
\$7 975

To upgrade to Australian Standards the sterilising equipment used at the foot clinic in southern Tasmania.

Huntingfield Pony and Riding Club
\$49 440

To relocate and renovate the meeting hall of the Huntingfield Pony and Riding Club.

Kingborough Community Garden and Shed Group
\$42 005.70

To build a community workshop/shed which will complement the community garden creating a multi-functional, socially-inclusive resource that can be used by the whole community.

Launceston Climate Coalition
\$2 900

To provide school students with the opportunity to develop and express their ideas on climate change as part of the Streets Alive festival.

Launceston Women's Shelter Inc t/a Magnolia Place
\$48 387

To purchase the necessary equipment required to update the accommodation units to a reasonable standard of living for its residents.

Legana Playgroup/Playcentre Association Inc
\$39 105

To provide a safe outdoor play environment to meet licensing standards for the Legana Playcentre and Playgroup and users of the Uniting Church Hall grounds.

Lifeline North West Tasmania Inc
\$54 100

To purchase a point-of-sale computer system for Lifeline shops in the north and north west of Tasmania.

Lilydale District Pony Club Inc
\$3 460

To purchase a portable toilet and trailer for use at rallies and events.

Lilydale Senior Citizens Club Inc
\$6 650

To replace the iron roof on the original section of the clubrooms and replace the fascia on the whole of the building.

Lions Club of Wynyard (on behalf of Wynyard Community Garden)
\$10 460

To construct a pole frame shelter for the Wynyard Community Garden.

Low Head Pilot Station Support Group Inc
\$2 128

To purchase a mosaic database and laptop to catalogue over 12 000 objects, documents, photographs and books.

May Shaw Health Centre Inc
\$3 996

To purchase four new exercise bikes to extend the existing spin classes for men.

Menzies Research Institute
\$9 362

To undertake a pilot program, in collaboration with the Royal Hobart Hospital, to determine the prevalence of both recognised and unrecognised depression in people with diabetes and foot ulcers.

Mersey Leven Child Care Services Inc
\$10 000

To resurface the outside school hours/vacation care and playgroup outdoor play area with all-weather material.

National Trust of Australia (Tasmania)
\$9 000

To engage a consultant archivist to catalogue and digitise the Rory Spence Architectural Library so that it is readily accessible to the community in hardcopy and on-line.

New Mornings Ministries Inc
\$20 771

To train support group facilitators to implement the New Mornings 'ENGAGE in Better Mental Health' support group project.



✓ The Board has awarded over \$1 million to Police and Community Youth Clubs to purchase equipment and undertake a range of programs to support the community.

✓ The Board has awarded over \$150 000 to organisations specifically supporting victims of sexual assault.

North West Environment Centre**\$34 100**

To purchase a vehicle and engage a project officer to coordinate the "Produce to the People" project. Participants collect excess produce from backyards and community gardens along the north west and redistributes it to people in need within the community.

The Parkside Foundation**\$68 308**

To purchase a vehicle to enable disabled clients increased access to, and involvement in, community events.

Performing Lines Ltd**\$5 742**

To bring a small cast of actors to King Island to run workshops and a technical/lighting design master-class.

Police and Citizens Youth Club**Launceston Inc****\$49 555**

To improve safety, inclusion and capacity by upgrading the training equipment in the trampoline sports program.

Proactive Agricultural Safety and Support Inc**\$9 999**

To write, edit and proofread articles for three editions of the "Pass it on" publication. Articles will include stories on real life incidents and provide practical solutions to a wide range of hazards commonly found in rural environments.

Queenstown Amateur Swimming**Club Inc****\$8 976**

To upgrade the starting platforms at the Queenstown swimming pool.

Queenstown Police and Citizens Youth**Club Inc****\$7 500**

To paint the interior of the Queenstown Police and Citizens Youth Club.

Richmond Fellowship Ulverstone**\$8 000**

To implement a health and wellbeing program which is structured, supervised and will include complementary therapies, health education and exercise therapy for people suffering from mental health issues.

Riding for the Disabled Association**North Inc****\$8 550**

To construct a 'dual purpose' carriage in order to expand program delivery.

Rosebery Neighbourhood Centre Inc**\$2 370.96**

To purchase various equipment for community use at the Rosebery Community Market.

Rosebery Neighbourhood Centre Inc**\$2 905.08**

To provide a safe, supervised youth area which has ready access to drug, alcohol, sexual health and family planning resources in a casual and inclusive environment.

Rotary Club of Longford**\$2 640**

To purchase a community barbecue.

Rotary Club of the Huon Valley Inc**\$1 990**

To fit the Rotary Club's trailer with barbecues and fittings to make it fully self-contained, easily accessible and transportable.

Salamanca Arts Centre**\$27 825**

To purchase wall wash lighting allowing contemporary lighting in Salamanca Art Centre's galleries and exhibition spaces to better achieve pride, inclusivity and artistic prestige.

The Salvation Army (Tasmania) Property Trust**\$2 000**

To purchase a variety of parenting education and library resources to assist in the delivery of parenting and educational programs in McCombe House.

The Salvation Army (Tasmania) Property Trust**\$25 930**

To purchase a cool room and vegetable garden to enable the implementation of the inter-agency fresh food distribution project.

The Salvation Army (Tasmania) Property Trust**\$3 300**

To purchase ten chairs and a plasma television for older people residing in Barrington Lodge.

The Salvation Army (Tasmania) Property Trust**\$4 900**

To purchase twelve new televisions for use at the crisis and transitional accommodation properties for women and children escaping family violence in Burnie.

Samaritans Tasmania Inc**\$31 000**

To improve the awareness of Samaritans and increase their volunteer base.



✓ The Board has awarded over \$450 000 to projects on our outer islands - Flinders, King, Maria, Maatsuyker, Bruny, Deal, Tasman, Chappell, Badger, Babel and Cape Barren.

✓ The Board has awarded over \$300 000 for community garden projects.

Sassafras Community Hall Association Inc

\$49 305

To remove brick board from the exterior surface of the hall building and reclad with PVC weatherboards.

Scamander Surf Life Saving Club Inc

\$17 290

To purchase equipment to fit out the first aid and administration room.

Self Help Workshop Inc

\$6 745

To purchase a commercial-size guillotine to use in the services area.

South Launceston Little Athletics Centre Inc

\$5 000

To implement a ten lane infra-red sensor timing gate system.

Southern Midlands Council (on behalf of Chauncy Vale Wildlife Sanctuary Management Committee)

\$10 000

To restore elements of the heritage-listed Day Dawn cottage to increase accessibility for education and tourist visitation.

Southern Midlands Council

\$39 900

To install ten life-size models of tradespeople from the 1840s in the windows of shops and houses along High Street, Oatlands.

Special Olympics Australia

\$17 770

To pay for the travel, administration and operational costs to enable people with an intellectual disability to become active, be healthy and have fun through ribbon days and regional competition opportunities.

Spring Bay R.S.L Sub Branch

\$8 668

To erect a steel frame patio and roof enclosing the existing barbecue area from the elements which will allow for functions to be held in most weather conditions.

St Giles Society Inc

\$54 970

To create an equipment loan pool at St Giles Southern Services for children with disabilities.

St Vincent de Paul Society - Burnie Region

\$25 366.70

To purchase a vehicle suitable for collecting and transporting donations to the centres and delivering heavy goods to persons in need.

Support Help and Empowerment Inc (S.H.E.)

\$5 000

To pay for the cost of boarding animals within the shelters for people escaping domestic violence.

Surveying and Spatial Sciences Institute

\$28 750

To commemorate the significant aspects of Tasmania's history and geography by placing artistic sculptures, artwork and interpretive material on the Midland Highway and in the Ross township.

Swansea Bowls Club Inc

\$2 500

To purchase 64 chairs for community use.

TADPAC Print

\$50 000

To purchase a guillotine to enable apprenticeships and traineeships to be offered for people with disabilities.

Tasman Council (on behalf of Tasman Community Op Shop and Library Inc)

\$100 000

To upgrade and expand the Tasman Community Op Shop and Library to a suitable standard for use by the community.

Tasmanian Association of Police and Community Youth Clubs Inc

\$54 083.85

To engage a coordinator and purchase equipment to assist in the delivery of programs for at-risk youth and the community to enable the long-term development and capacity building of PCYCs statewide.

Tasmanian Deaf Society Inc

\$37 972.07

To purchase a vehicle for visiting rural and remote Tasmanian communities to provide hearing screenings, support and information to those impacted by hearing loss and other at-risk groups.

Tasmanian Regional Arts (on behalf of the Channel Regional Arts Group)

\$4 000

To purchase a second-hand baby grand piano for the Kettering community hall to allow for an extended repertoire of chamber music concerts performed for the local community.

Tasmanian Regional Arts (on behalf of the Deloraine Dramatic Society)

\$22 500

To pay the director's and choreographer's fee to direct "The Future – we're in it", a comical 20/20 vision of the next ten years, conveyed in a new musical community theatre production.

Tasmanian Theatre Company

\$9 626.62

To undertake an equipment upgrade including electrical and lighting improvements to the Backspace Theatre to make it safer and more accessible.



✓ The Board has awarded over \$400 000 to The National Trust to preserve Tasmania's historic buildings.

✓ The Board has awarded over \$750 000 to projects supporting the preservation and celebration of Aboriginal heritage and culture.



recognised training qualifications

Launceston Student Workshop Inc

Studentworks has a long and proud 32 year history of providing a relevant, engaging and challenging program to students at risk of disengaging from traditional classroom based learning. Studentworks provides a workplace enterprise which serve as a complementary educational environment for 14-16 year olds who require an intensely practical education.

The Studentworks program provides young people with the necessary skills for employment in their chosen field. The students' strengths lie in their practical abilities and in the hands-on learning style. The program aims to intervene before the students have lost self belief and disengaged from being an effective member of society.

Studentworks, a Registered Training Organisation, issues nationally recognised Certificate 1 in wood work, metal work, hospitality, warehousing and retail. Over 90% of students who complete their program enter full-time employment or undertake further study.

As part of their training, students manufacture and sell quality metal and wood products from nursery furniture to rubbish bins. They also offer outside catering.

The Fund has provided over \$300 000 to support their work through programs and equipment purchases.

Theatre Royal**\$4 564**

To replace the obsolete hearing loop with a wireless FM system for the benefit of hearing-impaired patrons.

Third Place Communities**\$9 968**

To provide a community-based early intervention mentoring program. Mentors will work alongside youths aged between 10-16 to restore old bicycles and provide them with everyday life skills.

Toddle Inn Child Care Centre**\$8 812.15**

To upgrade the outdoor Possum room to enhance the quality of play and safety.

Training Opportunities and Options for Learning (TOOL) Inc**\$73 450**

To implement a building and construction program that will build/restore community assets to improve the capacity and employability of at-risk young people and provide wider community benefits.

Training Opportunities and Options for Learning (TOOL) Inc**\$173 500**

To establish an alternative Training and Learning Centre that will assist 400 at-risk young people back to school or into employment.

The Trustees of the Diocese of Tasmania (on behalf of the Parish of Latrobe)**\$35 000**

To redevelop the existing meeting room to provide modern facilities for the Port Sorell community and the church in a rapid population growth area.

The Trustees of the Diocese of Tasmania (on behalf of the Parish of Launceston South)**\$20 000**

To undertake a conservation program for the St James Anglican Church, Franklin Village.

Uniting Church in Australia Property Trust (on behalf of the Longford-Perth-Cressy Congregation)**\$5 764**

To create a venue for health promotion and community events at the Longford Uniting Church by upgrading the hall and toilets.

University of the Third Age Kingborough Inc**\$5 651.73**

To install a hearing system incorporating a loop driver, cable and portable public address system in a second classroom of the Adult Education Centre in Kingston.

Van Diemen Light Railway Society Inc trading as Don River Railway**\$8 750**

To provide shelter for a forge and foundations for a hydraulic forging hammer in the Society's heavy engineering workshops at Don.

Wee Georgie Wood Steam Railway Inc**\$7 500**

To dismantle, test and repair the historic steam locomotive boiler built in 1935, to ensure its safe operation and compliance with licensing.

Westbury Agricultural Society**\$42 812**

To supply and erect a new storage shed.

West Launceston Primary School**\$3 730**

To provide children from at-risk families with a healthy breakfast and weekly Taiko drumming workshops for improved health, esteem and engagement with their local community.

West Tamar Historical Society (on behalf of the Supply River Church)**\$13 050**

To ensure the survival of the Supply River Church by carrying out the waterproofing maintenance work necessary to retain the integrity of the building.

Wildcare Inc (on behalf of Friends of Maatsuyker Island)**\$6 840**

To undertake guttering repairs to the Maatsuyker Island Lightstation.

Zeehan Neighbourhood Centre**\$7 000**

To purchase permanent play equipment for use by the local children in a safe and secure environment.



✓ The Board has awarded over \$250 000 to significant public gardens:

- the National Rose Garden at Woolmers;
- the Emu Valley Rhododendron Garden near Burnie; and
- the Tasmanian Bushland Garden at Buckland.

✓ The Board has awarded over \$200 000 to skateparks and BMX tracks around the State.

✓ The Board has awarded around \$75 000 to ex-service organisations.

✓ The Board has awarded almost \$120 000 to childcare or playgroups.



School of History and Classics

As part of the Atlas project, which is a next-generation Atlas for Tasmania, the University received a grant of \$50 000 from the Fund in 2009 to help provide professional development opportunities for museum volunteers. The program covers cataloguing, collection management, database skills, working with new media, collection/history preservation and promoting the local history.

Through the funding, the University employed a local consultant with strong links to local museums across the State. To the end of August 2010, around 25 history groups have participated, with another 38 planned for later 2010 and early 2011.

Feedback has been extremely positive with many volunteer members learning new skills and preserving important local collections.



The Smith Family

The Smith Family is a national, independent children's charity that helps disadvantaged Australian children by unlocking opportunities through education and learning.

The Fund has provided almost \$600 000 to The Smith Family. Funded projects include:

- a financial literacy and matched savings program for low income families to save for their own or their children's education;
- providing families with practical tools and skills around self-management of health as well as building social connection for families not engaged with community structures;
- connecting financially-disadvantaged families to increase social, educational and employment opportunities by providing them with internet ready computers, digital literacy training and ongoing support; and
- establishing and maintaining Family Learning Clubs in eight disadvantaged Tasmania communities, engaging up to 900 children and their parents.

Background to the Tasmanian Community Fund

Trust Bank sale

The Tasmanian Community Fund was established in 1999 to provide grants to not-for-profit organisations.

The Fund arose from the sale of the Trust Bank.

The sale proceeds were used to gain two particular benefits to the community:

- retirement of a portion of State debt; and
- establish a community fund to distribute an annual appropriation to the community through grants.

The legislation provided that the appropriation would be maintained in line with the consumer price index.

Tasmanian Community Fund Act 2005

In 2005, Parliament passed stand-alone legislation which governs the Fund's operations. The new legislation preserved the main principles enshrined in the original legislation including:

- the Board has full autonomy to set the Fund's direction and award grants; and
- funds provided to the Board for distribution are guaranteed and not subject to Budget deliberation.

Under the legislation, Board members must act honestly and in the best interests of the Tasmanian community, and avoid any conflict of interests.

Vision

Our vision is to work with Tasmanians to *make a difference*.

Mission

We provide grants to community organisations that make a difference by improving the social, environmental and economic wellbeing of the Tasmanian community.

Funding allocated

Since 2000, the Board has assessed around 4 600 applications for funding, requesting over \$260 million.

Following a rigorous assessment of each of those applications received in eighteen general rounds and four targeted funding rounds, the Board has approved \$50 million in grants to 1 380 projects.

The amount of funds allocated, and the number and variety of projects funded, makes the Fund a significant source of funding for Tasmanian community organisations.

In 2009-10, total funding of \$6.11 million was awarded to 194 projects.

Applying for a Grant

To be eligible to apply, organisations must be:

- not-for-profit;
- incorporated, or sponsored by an incorporated organisation; and
- based in Tasmania, or proposing to undertake a project in Tasmania.

Our funding categories are:

- community welfare;
- cultural and arts;
- economic development and employment;
- education;
- environment;
- health;
- regional development;
- religious;
- sporting and recreation; and
- youth.

Preference in funding will be given to projects which best demonstrate:

- long-term benefit to the Tasmanian community;
- innovation and proactivity;
- an integrated and collaborative approach, avoiding duplication;
- value for money;
- community support for the project, particularly from any partners;
- other financial or in-kind contributions;
- the ability to build and strengthen community capacity;
- good prospects for successful implementation; and
- volunteer and community involvement with the project.

Funding exclusions:

- organisations with overdue reporting obligations for completed TCF projects;
- Australian or State Government agencies, or Government Business Enterprises, or to a local government, to fund its core responsibilities, or to another body to undertake a core government responsibility;
- projects which produce a private benefit to a specific business or person(s);
- retrospective funding ie for costs already incurred before approval of funding is given;
- ongoing operational costs;
- conferences, forums or workshops;
- loans; or
- where it is apparent that the applicant is becoming dependent on TCF funding.

Applicants should ensure they read and follow the guidelines published for each funding round.

Tasmanian Community Fund Governance

Board Details

Board Functions

Under the Act, the Board's functions are to:

- provide grants out of the Fund for community purposes as the Board thinks fit;
- manage the Fund, in any manner in which the Board thinks fit, so as to maximise the return earned on the Fund, having regard to the need to:
 - provide grants; and
 - exercise reasonable care and prudence so as to maintain the integrity of the Fund; and
- conduct its operations in an efficient, effective and economical manner.

At its discretion, the Board may:

- distribute the whole or any part of the Fund's balance; or
- accumulate the whole or any part of the balance and to invest that amount to distribute in future financial years.

In performing its functions and exercising its powers, Board members must:

- act honestly in all matters;
- declare any conflict of interest, and not participate in decisions relating to such a conflict of interest; and
- ensure that their functions and powers are performed in the best interests of the Tasmanian community.

Conflict of Interest

Board members must declare any potential conflict of interest and not participate in any decisions relating to those conflicts. Board members complete a 'declaration of interests' form at the start of each year and update the declaration if circumstances change during the year. New members complete the declaration at the commencement of their appointment.

The Act provides for the imposition of significant penalties if Board members fail to declare those interests.

Gifts

To help ensure all decisions are made, and seen to be made, fairly and impartially, Board members are unable to accept gifts from potential applicants or grant recipients.



positive ageing

U3A Kingborough Inc

U3A Kingborough is part of the University of the Third Age network. U3A's are like universities in the original sense of the word - communities of people who come together to learn from one another. U3As are learning cooperatives of retired or semi-retired people. By offering many educational, creative and leisure activities to their members, they encourage positive ageing.

U3A Kingborough Inc started in 2000 and offers courses in Kingston at the Adult Education Building Block A, at the West Winds Community Centre in Woodbridge, and other venues as appropriate. It is one of seven U3As in southern Tasmania.

The Fund provided a small grant of \$898 to purchase a microphone and amplifier to assist in meeting the requirements of students with reduced hearing.



community houses

Maranoa Heights, West Winds, Bucaan and West Moonah Community Houses/Centres

A joint adult literacy initiative

Neighbourhood and community houses are places where people can meet, talk, make new friends, develop and share ideas, skills and knowledge and learn something new.

In 2009, the Fund awarded the four community houses a grant of \$441 573 to implement their adult literacy initiative.

Some specific activities run through the initiative included an oral history program with senior Aboriginal men in the lower Channel and Huon; a song writing project with the Choir of High Hopes; fishing, sewing and cookery classes, incorporating literacy and numeracy components; and a recent offenders' literacy program.

Consultation with individuals, agencies, groups and organisations has been ongoing, as has the forging of cooperative relationships and partnerships, e.g with the Steps to the Future program, Glenorchy and Rosny LINC's, Glenorchy Action Interagency Network and with the Southern Literacy Providers Network. This has helped greatly to pool resources and skills.

Board Members

The members of the Board as at 30 June 2010 were:

Lynn Mason - Chairwoman

Lynn retired as President of the Local Government Association of Tasmania in 2006 after 23 years as a Flinders Councillor. She is a Director of Quadrant Superannuation Fund and Metro Tasmania, a member of the Local Government Board, and chaired Tasmanian Affordable Housing Ltd. With her husband, she runs farms on Flinders Island and near Carrick in northern Tasmania. She was Telstra Tasmanian Businesswoman of the Year and Westpac Australian Business Owner of the Year in 2000, and in 2005 was inducted onto the Tasmanian Honour Roll of Women.

Lynn was appointed to the Board in March 2007. In December, she was appointed as Chairwoman for the balance of her first term, and then reappointed for a further three years from March 2010.

Catherine Fernon

Catherine lives on the north-west coast and is currently Business Manager, Institute of Regional Development at the University of Tasmania's Cradle Coast Campus. Catherine has many years experience working in community development and education and has a keen interest in supporting community and cultural development activities at a local level.

Catherine was inducted onto the Tasmanian Honour Roll of Women in 2008.

Catherine was first appointed to the Board in 2003, and reappointed in 2007 and 2010.

Peter Kay

Peter has significant experience in corporate governance, management, public relations and corporate communications. He has held senior positions in Australian Government departments and statutory authorities providing funding, and in the private sector in Tasmania, where he was Manager, Marketing and Public Affairs for the RACT, Chief Executive of communications firm Kay and Kay and a Director of the Printing Authority of Tasmania.

Peter was appointed to the Board in January 2010.

Nell Kuilenburg

Nell has 25 years experience working in the non-government sector. She is Development and Research Manager with The Salvation Army Tasmania, and has worked with a number of non-government and Australian government agencies. She has been a board member of several non-government organisations and networks at both a state and national level including aged care, domestic violence, child abuse, new arrivals and community housing. She has a keen interest in child protection, family violence, aged care and projects that focus on early intervention and prevention.

Nell was appointed to the Board in January 2010.

Ron Sanderson

Ron has extensive experience as an engineer and local government administrator. He is currently General Manager of the Brighton Council, with 23 years of local government experience within Tasmania giving him an extensive state-wide network of contacts. Ron also spent 14 years as an engineer in the oil and gas industry working in Canada, Western Australia and Victoria.

Ron was appointed to the Board in 2007.

Sheryl Thomas

Sheryl has significant experience in assisting not-for-profit community organisations across Tasmania in accessing funding to grow communities, through a previously federally funded program. While Sheryl has always lived in Launceston, her past employment positions has allowed regular visits to all parts of Tasmania, allowing for a greater understanding of projects that can contribute to successful outcomes. Sheryl also has commitments to education and training, and natural resource management.

Sheryl was appointed to the Board in January 2010.



the board

Board members left-right Nell Kuilenburg, Catherine Fernon, Ron Sanderson, Lynn Mason (Chairwoman), Sheryl Thomas and Peter Kay



Drug Education Network

The Drug Education Network is a Statewide organisation operating within harm reduction principles providing health promotion programs, brief interventions and research in relation to alcohol and other drugs in Tasmania.

The DEN's services are available to all members of the community including parents, young people, schools, students, teachers and employers. The DEN can also provide up-to-date information on specific drugs and drug-related issues.

DEN runs a number of projects to assist young people in making safe decisions around the use of alcohol and other drugs, and to inform individuals about where to access support should they be concerned about their own alcohol use or that of someone else.

The Fund has awarded \$195 804 for a number of programs to support their services including a visual media campaign highlighting that 'alcohol is a drug too' and their 'Tune In Not Out', a digital portal on navigating life and its challenges including getting a safe tattoo, partying, sex, exams or managing depression.



making safe choices

Board Member Appointments

The Board has a mix of financial and community-based experience. By convention, three members are based in the south, two in the north and one in the north-west.

Under the Act, Board members are appointed by the Governor on the recommendation of the Minister with administrative responsibility for the Act. Before making a recommendation to the Governor, the Minister must first consult with the current Board.

Board members are appointed for a maximum of three years and may be re-appointed.

Appointment details – as at 30 June 2010

| Board member | Region | First appointed | Number of terms | Expiration of current appointment |
|-------------------------|------------|-----------------|-----------------|-----------------------------------|
| Lynn Mason - Chairwoman | north | March 2007 | 2 | March 2013 |
| Catherine Fernon | north-west | November 2003 | 3 | March 2013 |
| Peter Kay | south | January 2010 | 1 | October 2012 |
| Nell Kuilenburg | south | January 2010 | 1 | October 2012 |
| Ron Sanderson | south | December 2007 | 1 | December 2010 |
| Sheryl Thomas | north | January 2010 | 1 | December 2012 |

Three members left the Board during the year:

- the appointments of two of the Fund's inaugural members, Chairman Gerald Loughran and member Joan Walters, ceased after nine years; and
- Becky Shelley did not seek reappointment after the expiration of her first term due to a change in personal circumstances.



Joan Walters



Becky Shelley



Gerald Loughran

Board member Lynn Mason was appointed as the Chairwoman from December 2009 until the balance of her first term, and was then reappointed in March for a further three years.

Three new members were appointed during the year – Sheryl Thomas, Peter Kay and Nell Kuilenburg.

Board Member Catherine Fernon was reappointed in March for a further three-year term.

Remuneration

Board members receive remuneration in recognition of their responsible position managing a significant pool of public funding. Board fees are set by Cabinet in line with parameters for similar entities.

Under the terms of their appointment, Board members are also entitled to receive reimbursement for any reasonable out-of-pocket expenses while performing their duties.

Member remuneration is provided from the Fund's reserved-by-law appropriation.

Further details of Board fees and on-costs are included in the financial statements to this report.

Board meetings

Board meetings were held in Hobart (3 meetings), Longford and Ulverstone.

Board meeting attendance

| Board Member | Position | Meetings attended / number possible | Notes |
|------------------|-------------------|-------------------------------------|--|
| Gerald Loughran | Chairman | 3/3 | Appointment ceased in December |
| Lynn Mason | Member/Chairwoman | 5/5 | Appointed Chairwoman in December, Reappointed in March |
| Catherine Fernon | Member | 5/5 | Reappointed in March |
| Ron Sanderson | Member | 5/5 | Appointment expires December 2010 |
| Becky Shelley | Member | 2/3 | Appointment ceased in December |
| Joan Walters | Member | 3/3 | Appointment ceased in December |
| Peter Kay | Member | 2/2 | Appointed in January |
| Nell Kuilenburg | Member | 2/2 | Appointed in January |
| Sheryl Thomas | Member | 2/2 | Appointed in January |

Fund Staff

Fund staff are the main point of contact for the public. Staff manage the day-to-day operations of the Fund and support the Board in undertaking its activities. Their role includes:

- providing advice to potential grant applicants and grant recipients;
- presenting community forums and grant writing workshops;
- coordinating the grant application process;
- managing administrative arrangements for grant recipients;
- representing the Board at community events;
- liaising with other philanthropic organisations; and
- providing advice and research support to the Board.

Under the Act, Fund staff are State Service employees. For 2009-10, Treasury provided administrative services for the Board. In July 2010, administrative support, including staff, was transferred to the Department of Premier and Cabinet.

As at 30 June 2010, TCF staff were:

Mark Green – Principal Executive Officer

Mark has managed the Fund's day-to-day operations for the past six years, after twelve years in the Australian Public Service in Canberra and Melbourne.

Mark was raised and educated in Tasmania, and returned in 2004 to enjoy the Tasmanian way of life.

Mark estimates he has responded to more than 10 000 queries from the public about the Fund's operations.

Melissa Gunn – Administrative Officer

Melissa accepted the role of Administration Officer with the Fund in October 2007.

Before joining the Fund, Melissa held various administrative roles in Treasury including positions with the Liquor and Gaming branch, State Revenue Office, Government Prices Oversight Commission (GPOC) and the Office of the Tasmanian Energy Regulator (OTTER).

Melissa has completed a Diploma in Office Management and is keen to further develop her skills in the area of office and grant management.

"Working for the fund is an absolute pleasure. The grant applicants show such passion about their projects and I truly love taking the 'thank you' calls when an applicant has been successful in gaining funding. The joy and pleasure that a small amount of money can bring to an organisation and its surrounding community is pretty amazing - my only wish is that there was enough money to fund them all."



Mark Green, former Chairman
Gerald Loughran and Melissa Gunn

Community Forums

Community forums are an opportunity for the Fund to inform the public about how to apply for grants, and the types of projects supported. They are also an opportunity for the community to inform the Fund about local issues.

The Fund targets regions where applications may not be as strong, to help ensure all areas of the State have equitable access to the funds. This year, the Board held forums in Queenstown and Ulverstone.

Grant-writing workshops were held in Hobart, Launceston and Burnie in July.

In addition, staff provided grant-writing information to the MS Society and at an Australian Business Arts Foundation seminar.

Professional services engaged

The Board has engaged a number of professional services to assist the Board in meeting its obligations to the Tasmanian community. These are listed below.

Audit of grant recipients

To assist the Board in ensuring public funds are expended properly by grant recipients, from 2007 we engaged accounting firm Deloitte Touche Tohmatsu to audit medium and large grants.

This has ensured consistent auditing of those grants; assisted grant recipients to understand their obligations to account for the expenditure of public funds; and provided some certainty over timing of the audits.

In 2009, consistent with revised Treasurer's Instructions, the Board approved an increase to \$50 000 for the minimum grant size requiring an audit. However, the Board may also nominate smaller grants for auditing purposes.

Media

The TCF has retained the services of Corporate Communications to provide specialist media advice and coordination. Corporate Communication assists the Board in preparing media stories for mainstream and local media, arranging media events, preparing press releases, preparation of an electronic newsletter, and other media advice.

Throughout the year, many grant recipients received coverage on television news, in the regional and newspapers, on radio and the internet. This helps promote the Fund to other community organisations, and provides a level of accountability to the community on how the funds are being used.

Proposed new community funding program

Following community consultation, in December the Treasurer announced that the Government would not progress a single new community funding program to replace the Community Support Levy and Tasmanian Community Fund.

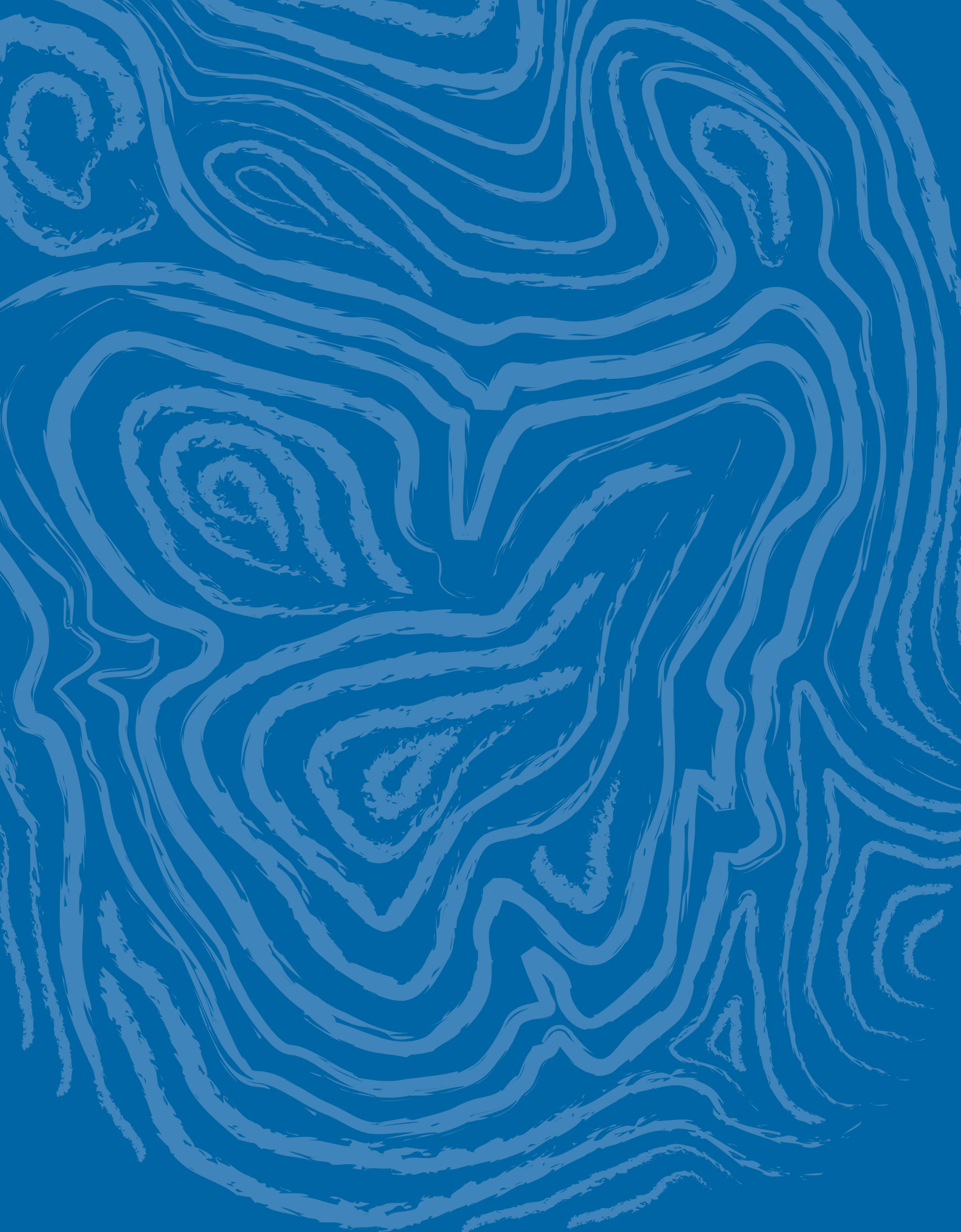
Conferences attended

Board members Lynn Mason and Ron Sanderson and staff attended Our Community's Best Practice in Grant Making conference in Melbourne in February.

Participants heard about:

- improving transparency and accountability;
- best practice solutions to common difficulties;
- lessons from a review of a major grant program;
- trends in grant making;
- assisting high-needs groups; and
- granting to small and emerging groups.

The conference provided Fund representatives with an opportunity to meet with other mainland grant bodies providing grants in Tasmania.



Helping the community make its mark on Tasmania.



Tasmanian Community Fund

Financial Statements
for the year ended 30 June 2010

Statement of Comprehensive Income

for the year ended 30 June 2010

| | Notes | 2010 \$ | 2009 \$ |
|---|-------------|--------------------|--------------------|
| Revenue and other income from transactions | | | |
| Section 5 receipts | 2.1 | 5 459 000 | 5 290 000 |
| Section 7 grants – refunds | | 152 369 | 156 137 |
| Interest | 1.4(a) | 296 529 | 515 843 |
| Total revenue and other income from transactions | | 5 907 898 | 5 961 980 |
| Expenses from transactions | | | |
| Section 7 grants | | 6 576 572 | 6 701 770 |
| Administrative services | 1.5(a) | 200 271 | 165 462 |
| Advertising | | 7 525 | 6 923 |
| Audit fees | 3.1 | 2 975 | 2 785 |
| Board fees | 1.5(b), 3.2 | 116 284 | 121 164 |
| Other board costs | 1.5(c) | 30 128 | 27 076 |
| Consultancy – including media and grant audits | 3.3 | 67 559 | 78 002 |
| Total expenses from transactions | | 7 001 314 | 7 103 182 |
| Net result from transactions (net operating balance) | | (1 093 416) | (1 141 202) |
| Comprehensive result | | (1 093 416) | (1 141 202) |

This Statement of Comprehensive Income should be read in conjunction with the accompanying notes.

Statement of Financial Position

as at 30 June 2010

| | Notes | 2010 \$ | 2009 \$ |
|---------------------------------|-------------|------------------|------------------|
| Assets | | | |
| <i>Financial assets</i> | | | |
| Cash | 1.6(a), 5.1 | 7 566 399 | 8 359 159 |
| Interest receivable | 1.6(b) | 28 857 | 24 623 |
| Tax asset | 1.6(c) | | 130 366 |
| Total assets | | 7 595 256 | 8 514 148 |
| Liabilities | | | |
| Grants payable | 1.7(a),4.1 | 383 883 | 233 903 |
| Other payables | 1.7(a),4.2 | 23 457 | 13 273 |
| Employee benefits | 1.7(b),4.3 | 29 748 | 22 781 |
| Tax liability | 1.7(c) | 7 393 | |
| Total liabilities | | 444 481 | 269 957 |
| Net assets (liabilities) | | 7 150 775 | 8 244 191 |
| Equity | | | |
| Accumulated funds | | 7 150 775 | 8 244 191 |
| Total equity | | 7 150 775 | 8 244 191 |

This Statement of Financial Position should be read in conjunction with the accompanying notes.

The accumulated funds of the Tasmanian Community Fund are substantially committed for payment of approved grants. Quantifiable contingent liabilities as at 30 June 2010 are the grants approved in principle by the Board but which are awaiting certain conditions to be met by the grant recipient before the grant deed can be executed. The maximum exposure of the quantifiable contingent liabilities of the Fund as at 30 June 2010 is \$4 502 291.36. As the grant conditions are met, these grants will be funded from the retained revenues of the Fund.

Cash Flow Statement

for the year ended 30 June 2010

| | Notes | 2010 \$ | 2009 \$ |
|---|-------|--------------------|--------------------|
| Cash flows from operating activities | | | |
| Cash inflows | | | |
| Section 5 receipts | | 5 459 000 | 5 290 000 |
| Section 7 grants – refunds | | 152 369 | 156 137 |
| Interest received | | 292 295 | 549 291 |
| GST receipts | | 732 225 | 447 877 |
| Total cash inflows | | 6 635 889 | 6 443 305 |
| Cash outflows | | | |
| Section 7 grants | | (6 424 572) | (6 504 508) |
| Administrative services | | (186 655) | (159 519) |
| Advertising | | (7 525) | (6 923) |
| Audit fees | | (2 800) | (2 340) |
| Board fees | | (115 859) | (120 700) |
| Other board costs | | (26 550) | (25 962) |
| Consultancy – media and grant audits | | (70 221) | (84 860) |
| GST payments | | (594 466) | (575 689) |
| Total cash outflows | | (7 428 649) | (7 480 500) |
| Net cash from (used by) operating activities | 5.2 | (792 760) | (1 037 195) |
| Net increase (decrease) in cash held and cash equivalents | | (792 760) | (1 037 195) |
| Cash and cash equivalents at the beginning of the reporting period | | 8 359 159 | 9 396 353 |
| Cash and cash equivalents at the end of the reporting period | 5.1 | 7 566 399 | 8 359 159 |

This Cash Flow Statement should be read in conjunction with the accompanying notes

Statement of Changes in Equity

for the year ended 30 June 2010

| | Accumulated surplus/ deficit | Total equity |
|-----------------------------------|------------------------------------|------------------|
| | \$ | \$ |
| Balance as at 1 July 2009 | 8 244 191 | 8 244 191 |
| Total comprehensive result | (1 093 416) | (1 093 416) |
| Balance as at 30 June 2010 | 7 150 775 | 7 150 775 |

| | Accumulated surplus/ deficit | Total equity |
|-----------------------------------|------------------------------------|------------------|
| | \$ | \$ |
| Balance as at 1 July 2008 | 9 385 393 | 9 385 393 |
| Total comprehensive result | (1 141 202) | (1 141 202) |
| Balance as at 30 June 2009 | 8 244 191 | 8 244 191 |

This Statement of Changes in Equity should be read in conjunction with the accompanying notes.

Notes to and forming part of the Financial Statements

for the year ended 30 June 2010

NOTE 1. Significant Accounting Policies

The Tasmanian Community Fund (the Fund) was established under section 33 of the *Trust Bank Sale Act 1999* (repealed) and is continued under section 4 of the *Tasmanian Community Fund Act 2005* (the Act). These Financial Statements cover the period from 1 July 2009 to 30 June 2010.

1.1 Basis of Accounting

Under the provisions of the Act, the Tasmanian Community Fund Board (the Board) is required to keep proper accounts and records of its transactions and affairs.

The Financial Statements have been prepared in accordance with Australian Accounting Standards and Interpretations issued by the Australian Accounting Standards Board.

Compliance with the Australian Accounting Standards may not result in compliance with International Financial Reporting Standards, as the AAS include requirements and options available to not-for-profit organisations that are inconsistent with IFRS. The Fund is considered to be not-for-profit and has adopted some accounting policies under the AAS that do not comply with IFRS.

The Financial Statements have been prepared on an accrual basis and, except where stated, are in accordance with the historical cost convention. The accounting policies are generally consistent with the previous year.

The Financial Statements have been prepared as a going concern. The continued existence of the Fund in its present form, undertaking its current activities, is dependent on Government policy and on continuing appropriations by Parliament for the Fund's administration and activities.

1.2 Purpose

The Fund is used to fund the payment of grants for community purposes. These include grants for community welfare, sporting or recreational, cultural and arts, educational, religious purposes, youth issues, health, environment, regional development and economic development and employment.

1.3 Functional and Presentation Currency

These Financial Statements are presented in Australian dollars, which is the Fund's functional currency.

1.4 Income from transactions

Income is recognised in the Statement of Comprehensive Income when an increase in future economic benefits related to an increase in an asset or a decrease of a liability has arisen that can be measured reliably.

(a) Interest

Interest is brought to account, where possible, on an accrual basis, otherwise as it is received.

1.5 Expenses from transactions

Expenses are recognised in the Statement of Comprehensive Income when a decrease in future economic benefits related to a decrease in an asset or an increase of a liability has arisen that can be measured reliably.

(a) Administrative services

The Board may make arrangements with the Secretary of the Department of Treasury and Finance for persons employed in the Department to be made available to the Board to enable it to perform its functions.

The cost of administrative services includes salaries and wages, payroll tax, superannuation and travel costs of staff available to the Board from the Department.

(b) Board fees

A member of the Board is to be paid such remuneration, expenses and allowances as the Governor may determine.

(c) Other Board costs

These are costs associated with employer superannuation contributions, payroll tax and travelling expenses attributable to Board members.

1.6 Assets

Assets are recognised in the Statement of Financial Position when it is probable that the future economic benefits will flow to the Fund and the asset has a cost or value that can be measured reliably.

(a) Cash and deposits

Cash means notes, coins, any deposits held at call with a bank or financial institution, as well as funds held in the Special Deposit and Trust Fund. Deposits are recognised at their nominal amounts.

(b) Receivables

Receivables are recognised at amortised cost, less any impairment losses. Due to the short settlement period, receivables are not discounted back to their present value.

(c) Tax asset

A tax asset is the input tax credits receivable from the Australian Tax Office and is recognised at the amount receivable.

1.7 Liabilities

Liabilities are recognised in the Statement of Financial Position when it is probable that an outflow of resources embodying economic benefits will result from the settlement of a present obligation and the amount at which the settlement will take place can be measured reliably.

(a) Payables

Payables, including goods received and services incurred but not yet invoiced, are recognised at amortised cost which, due to the short settlement period, equates to face value, when the Fund becomes obliged to make future payments as a result of a purchase of assets or services or the finalisation of a Grant Agreement and all conditions precedent thereto having been made.

(b) Employee benefits

Liabilities for wages and salaries and annual leave are recognised when an employee becomes entitled to receive a benefit. Those liabilities expected to be realised within 12 months are measured as the amount expected to be paid. Other employee entitlements are measured as the present value of the benefit at 30 June 2010, where the impact of discounting is material, and at the amount expected to be paid if discounting is not material.

A liability for long service leave is recognised, and is measured as the present value of expected future payments to be made in respect of services provided by employees up to the reporting date.

(c) Tax liability

A tax liability is the Goods and Services Tax payable to the Australian Taxation Office and is recognised at the amount payable.

1.8 Taxation

The Fund is exempt from all forms of taxation except Fringe Benefits Tax, Payroll Tax and the Goods and Services Tax.

Revenue, expenses and assets are recognised net of the amount of GST, except where the GST incurred is not recoverable from the Australian Tax Office.

In the Statement of Cash Flows, the GST component of cash flows arising from operating, investing or financing activities which is recoverable from, or payable to, the Australian Taxation Office is, in accordance with the Australian Accounting Standards, classified as operating cash flows.

1.9 Comparative Figures

Comparative figures are adjusted to reflect any changes in accounting policy or the adoption of new standards. There has not been any change in accounting policy or new standards impacting on the Fund during 2009-10.

1.10 Rounding

All amounts in the Financial Statements have been rounded to the nearest whole dollar, unless otherwise stated.

1.11 Events after Balance Date

From 1 July 2010, the administrative responsibility for the Act will be transferred from the Department of Treasury and Finance to the Department of Premier and Cabinet. The financial administration of the Fund will continue until October 2010 when the Fund's employees will physically transfer to the Department of Premier and Cabinet. This event will not have a material effect on the Fund's Financial Statements as at 30 June 2010.

NOTE 2: Income from transactions

2.1 Section 5 receipts

In accordance with section 5 of the Act, the Fund receives an annual appropriation through the State Budget. This funding is provided from the Consolidated Fund and is a Reserved by Law appropriation, in accordance with the provisions of the Act.

| | 2010 \$ | 2009 \$ |
|--------------------|------------------|------------------|
| Section 5 receipts | 5 459 000 | 5 290 000 |
| Total | 5 459 000 | 5 290 000 |

NOTE 3: Expenses from transactions

3.1 Audit fees

| | 2010 \$ | 2009 \$ |
|------------------------------|--------------|--------------|
| Audit fees – financial audit | 2 975 | 2 785 |
| Total | 2 975 | 2 785 |

The Fund's financial statements are audited by the Tasmanian Audit Office.

3.2 Board fees

Board members are remunerated on the basis of an annual rate determined by the Governor. During 2009-10 the approved board fees were \$30 279 for the chairperson and \$18 167 for each other board member. Board members during 2009-10 were as follows

| Board Member | Appointment date - current term | Cessation date |
|-------------------------------|---|----------------|
| Lynn Mason - chairperson | 13/12/2007 - member 21/12/2009 - chairperson | |
| Gerald Loughran - chairperson | 13/12/2007 | 20/12/2009 |
| Catherine Fernon | 13/12/2007 | |
| Ronald Sanderson | 15/12/2007 | |
| Rebecca Shelley | 1/11/2008 | 11/12/2009 |
| Joan Walters | 13/12/2007 | 12/12/2009 |
| Peter Kay | 25/01/2010 | |
| Sheryl Thomas | 25/01/2010 | |
| Cornelia Kuilenburg | 25/01/2010 | |

3.3 Consultancy – including media and grant audits

| | 2010 | 2009 |
|--------------------------|---------------|---------------|
| | \$ | \$ |
| Media and communications | 25 074 | 37 225 |
| Accountancy | 37 500 | 28 600 |
| Other | 4 985 | 12 177 |
| Total | 67 559 | 78 002 |

During 2009-10, the Fund engaged Deloitte Touche Tohmatsu to undertake audits of recipients of grants greater than \$10 000.

NOTE 4: LIABILITIES

4.1 Grants payable

Grants payable represent grants approved by the Board during 2009-10, for which a signed grant deed has been returned by the recipient and which has no unfulfilled conditions attached, but which had not been processed for payment by 30 June 2010. These grants were paid in the first week of July 2010.

| | 2010 | 2009 |
|----------------|----------------|----------------|
| | \$ | \$ |
| Grants payable | 383 883 | 233 903 |
| Total | 383 883 | 233 903 |

4.2 Other payables

| | 2010 | 2009 |
|--------------------------------|---------------|---------------|
| | \$ | \$ |
| Accrued expenses | 23 457 | 13 273 |
| Total | 23 457 | 13 273 |
| Settled within 12 months | 23 457 | 13 273 |
| Settled in more than 12 months | | |
| Total | 23 457 | 13 273 |

4.3 Employee benefits

| | 2010 | 2009 |
|--------------------------------|---------------|---------------|
| | \$ | \$ |
| Annual leave | 12 019 | 11 504 |
| Long service leave | 17 729 | 11 277 |
| Total | 29 748 | 22 781 |
| Settled within 12 months | 13 858 | 11 504 |
| Settled in more than 12 months | 15 890 | 11 277 |
| Total | 29 748 | 22 781 |

NOTE 5: CASH FLOW RECONCILIATION

5.1 Cash and cash equivalents

Cash at the end of the financial year as shown in the Statement of Cash Flows is reconciled to the related items in the Statement of Financial Position as follows:

| | 2010 | 2009 |
|--|------------------|------------------|
| | \$ | \$ |
| GST advance | 7 392 | (130 366) |
| At call deposits with financial institutions | 7 559 006 | 8 489 525 |
| Total | 7 566 398 | 8 359 159 |

5.2 Reconciliation of Net Result to Net Cash from Operating Activities

Net result

| |
|--|
| Decrease (increase) in Interest receivable |
| Decrease (increase) in Tax asset |
| Increase (decrease) in Employee benefits |
| Increase (decrease) in Grants payable |
| Increase (decrease) in Other payables |
| Increase (decrease) in Tax liability |
| Net cash from (used by) operating activities |

| 2010 | 2009 |
|-------------|-------------|
| \$ | \$ |
| (1 093 416) | (1 141 202) |
| (4 235) | 33 448 |
| 130 366 | (127 812) |
| 6 968 | 3 712 |
| 149 980 | 199 282 |
| 10 184 | (4 623) |
| 7 393 | |
| (792 760) | (1 037 195) |

NOTE 6: CONTINGENT LIABILITIES

Contingent assets and liabilities are not recognised in the Statement of Financial Position due to uncertainty regarding the amount or timing of the underlying claim or obligation.

Quantifiable contingencies

- a) Quantifiable contingent liabilities as at 30 June 2010 are the grants approved in principle by the Board but which are awaiting certain conditions to be met by the grant recipient before the grant deed can be executed. The maximum exposure of the quantifiable contingent liabilities of the Fund as at 30 June 2010 is \$4 502 291.36. As the grant conditions are met, these grants will be funded from the Accumulated funds.



local art and culture

Certification of Financial Statements

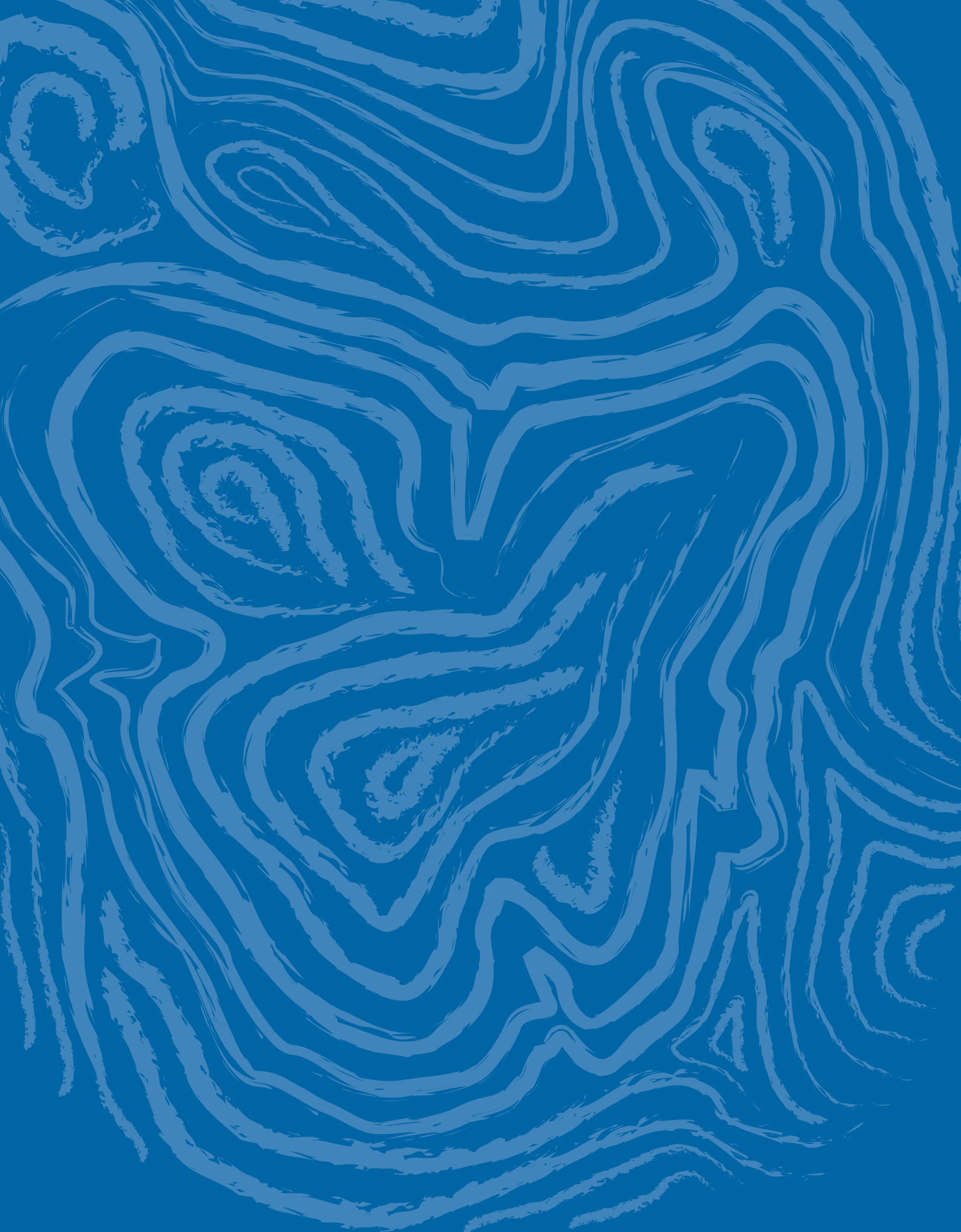
The accompanying financial statements of the Tasmanian Community Fund Board are in agreement with the relevant accounts and records and have been prepared in compliance with Australian Accounting Standards (including the Australian Accounting Interpretations) and the *Tasmanian Community Fund Act 2005*, to present fairly the financial transactions for the year ended 30 June 2010 and the financial position as at 30 June 2010.

At the date of signing, I am not aware of any circumstances which would render the particulars included in the financial statements misleading or inaccurate.



Lynn Mason
CHAIRPERSON
Tasmanian Community Fund Board

13 September 2010



Helping the community make its mark on Tasmania.



Tasmanian Community Fund

Auditor's Report



Tasmanian Audit Office

— ITINGE (TIAPI) (TIAPI) (TIAPI) —

INDEPENDENT AUDIT REPORT

To Members of the Parliament of Tasmania

TASMANIAN COMMUNITY FUND

Financial Statements for the Year Ended 30 June 2010

Report on the Financial Statements

I have audited the accompanying financial statements of the Tasmanian Community Fund (the Fund), which comprises the financial position as at 30 June 2010, the statement of comprehensive income, statement of changes in equity, statement of cash flows for the year ended on that date, a summary of significant accounting policies, other explanatory notes and the statement from the Chairperson.

The Responsibility of the Board for the Financial Statements

The Board is responsible for the preparation and fair presentation of the financial statements in accordance with Australian Accounting Standards (including the Australian Accounting Interpretations) and the *Tasmanian Community Fund Act 2005*. This responsibility includes establishing and maintaining internal controls relevant to the preparation and fair presentation of the financial statements that is free from material misstatement, whether due to fraud or error; selecting and applying appropriate accounting policies; and making accounting estimates that are reasonable in the circumstances.

Auditor's Responsibility

My responsibility is to express an opinion on the financial statements based upon my audit. My audit was conducted in accordance with Australian Auditing Standards. These Auditing Standards require that I comply with relevant ethical requirements relating to audit engagements and plan and perform the audit to obtain reasonable assurance as to whether the financial statements are free of material misstatement.

An audit involves performing procedures to obtain audit evidence about the amounts and disclosures in the financial statements. The procedures selected depend on the auditor's judgement, including the assessment of risks of material misstatement of the financial statements, whether due to fraud or error. In making those risk assessments, the auditor considers internal control relevant to the Board's preparation and fair presentation of the financial statements in order to design audit procedures that are appropriate to the circumstances, but not for the purpose of expressing an opinion on the effectiveness of internal control. An audit also includes

To provide independent assurance to the Parliament and Community on the performance and accountability of the Tasmanian Public Services.

• Professionalism • Respect • Consideration • Continuous Improvement • Customer Focus

Making a Difference

evaluating the appropriateness of accounting policies used and the reasonableness of accounting estimates made by the Board, as well as evaluating the overall presentation of the financial statements.

I believe that the audit evidence I have obtained is sufficient and appropriate to provide a basis for my audit opinion.

Independence

In conducting this audit, I have complied with the independence requirements of Australian Auditing Standards and other relevant ethical requirements. The *Audit Act 2008* further promotes independence by:

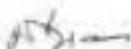
- providing that only Parliament, and not the executive government, can remove an Auditor-General, and
- mandating the Auditor-General as auditor of State Entities but precluding the provision of non-audit services, thus ensuring the Auditor-General and the Tasmanian Audit Office are not compromised in their role by the possibility of losing clients or income.

Auditor's Opinion

In my opinion the financial statements of the Tasmanian Community Fund:

- (a) present fairly, in all material respects, the financial position of the Fund as at 30 June 2010, and its financial performance, cash flows and changes in equity for the year then ended; and
- (b) are in accordance with the Australian Accounting Standards (including Australian Accounting Interpretations).

TASMANIAN AUDIT OFFICE



H M Blake
AUDITOR-GENERAL

HOBART
6 October 2010

I warrant that the financial statements of the Tasmanian Community Fund are true and correct in all material respects and that the Auditor-General is not aware of any material misstatements or omissions in the financial statements.

Making a Difference

Tasmanian Community Fund

By the Numbers

Grant Round Summary

TABLE 1 - general grant round

| Grant Round | Amount allocated | No of approved projects | Financial Year |
|--------------|---------------------|-------------------------|----------------|
| 1 | \$1 585 430 | 49 | 2000-01 |
| 2 | \$1,659 919 | 48 | |
| 3 | \$1 610 429 | 45 | 2001-02 |
| 4 | \$1 549 353 | 36 | |
| 5 | \$1 872 110 | 56 | 2002-03 |
| 6 | \$2 318 964 | 50 | |
| 7 | \$1 800 252 | 52 | 2003-04 |
| 8 | \$1 941 258 | 72 | |
| 9 | \$2 054 995 | 76 | 2004-05 |
| 10 | \$1 950 415 | 62 | |
| 11 | \$2 565 950 | 68 | 2005-06 |
| 12 | \$2 097 601 | 69 | |
| 13 | \$2 386 302 | 76 | 2006-07 |
| 14 | \$2 459 814 | 62 | |
| 15 | \$2 392 705 | 64 | 2007-08 |
| 16 | \$1 961 226 | 51 | |
| 17 | \$2 920 200 | 95 | 2008-09 |
| 18 | \$2 837 888 | 105 | |
| 19 | \$2 136 712 | 84 | 2009-10 |
| 20 | \$2 667 745 | 102 | |
| Total | \$42 769 268 | 1322 | |

TABLE 2 - targeted initiatives summary

| Grant Round | Amount allocated | No of approved projects | Financial Year |
|---|--------------------|-------------------------|----------------|
| Early Childhood Intervention | \$1 017 293 | 3 | 2003-04 |
| Tasmanian Cultural Heritage | \$1 980 883 | 31 | 2005-06 |
| Tasmanian Aboriginal Heritage | \$281 679 | 7 | 2006-07 |
| Building Tasmania as the Learning Community – adult and family literacy | | | |
| round 1 | \$2 866 913 | 9 | 2008-09 |
| round 2 | \$1 302 570 | 8 | 2009-10 |
| Total | \$7 449 338 | 58 | |

CHART 1: Total amount awarded and number of grants for all rounds: 2000 - 2010

The graph below shows the total funds awarded and the number of grants each year. The five targeted rounds were held in the years with the highest amounts awarded and the highest number of grants.

The chart also shows that the four biggest years for funding were in the last five years.



CHART 2: General grant rounds - number of applications: 2000 - 2010

The following graph shows the impact of the small grant stream introduced in 2008-09. There had been a slow decline in the number of applications from 2000 to 2008. Since the introduction of the small grants, which made it easier to apply for amounts of \$10 000 or less, there has been an increase in the number of applications.

The chart also shows that there has been a trend to award more grants each year. This is most evident in the last two years where the number of approved grants is about double the number approved in the first two years.

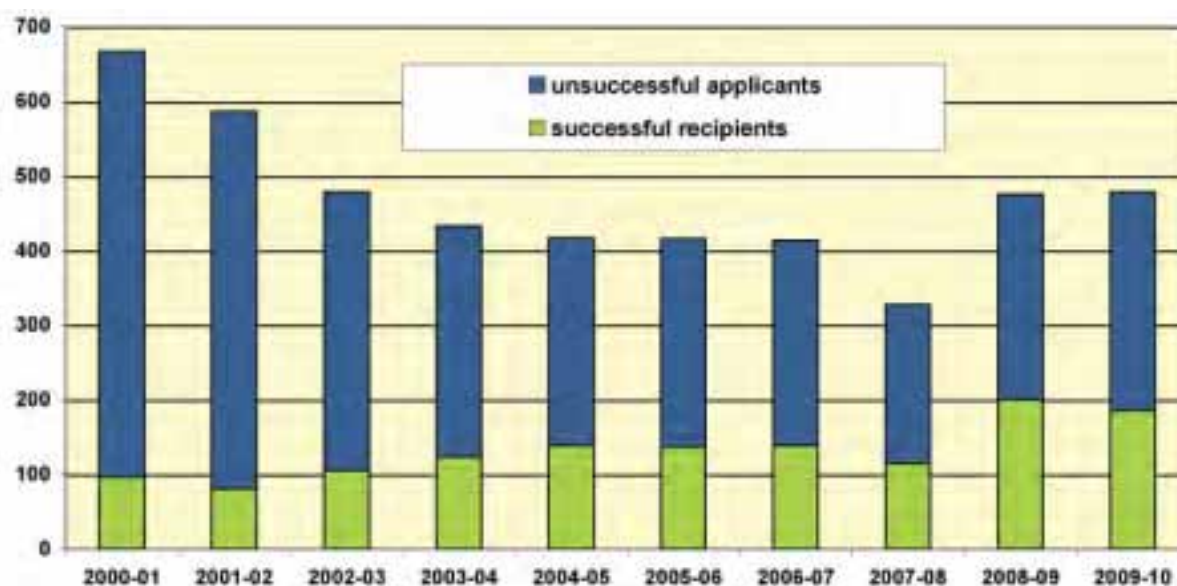
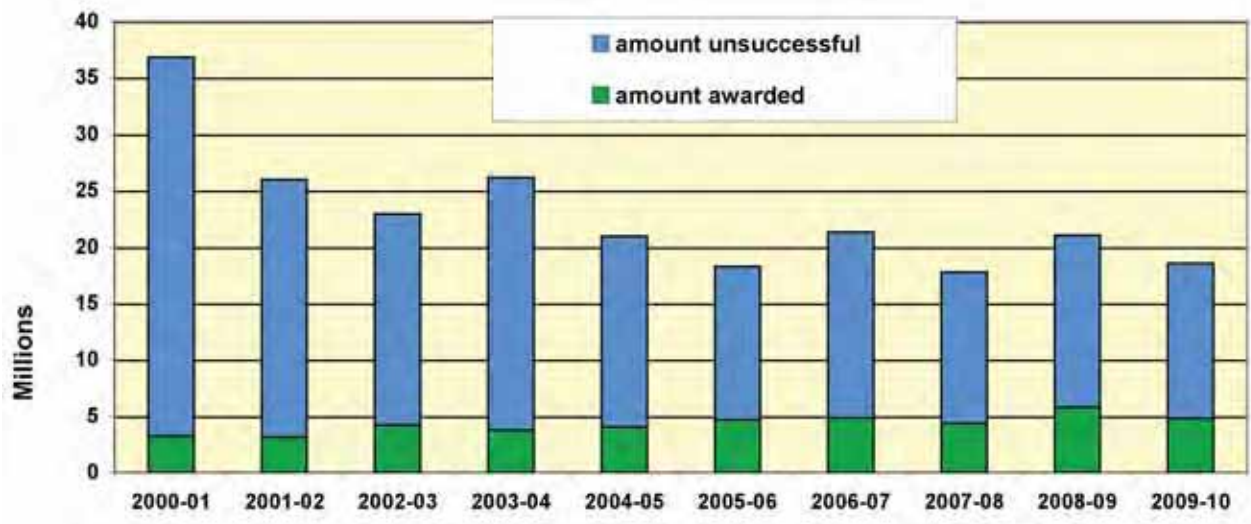


CHART 3: General grant rounds - amount of funds requested: 2000 - 2010

The amount of funding requested has declined over time, levelling off in the last few years. In the early years, the Fund received many applicants which were unrealistic simply due to the large amount of funds requested. The Fund has specifically addressed this issue in guidelines and community presentations, and now receives few unrealistic applications.



environmental education

What size grants are awarded?

CHART 4: Proportion of general grants, by funding range: 2000 - 2010

Since 2000, most of the grants awarded have been for small to medium amounts (up to \$50 000). Only a small number are for amounts over \$100 000.

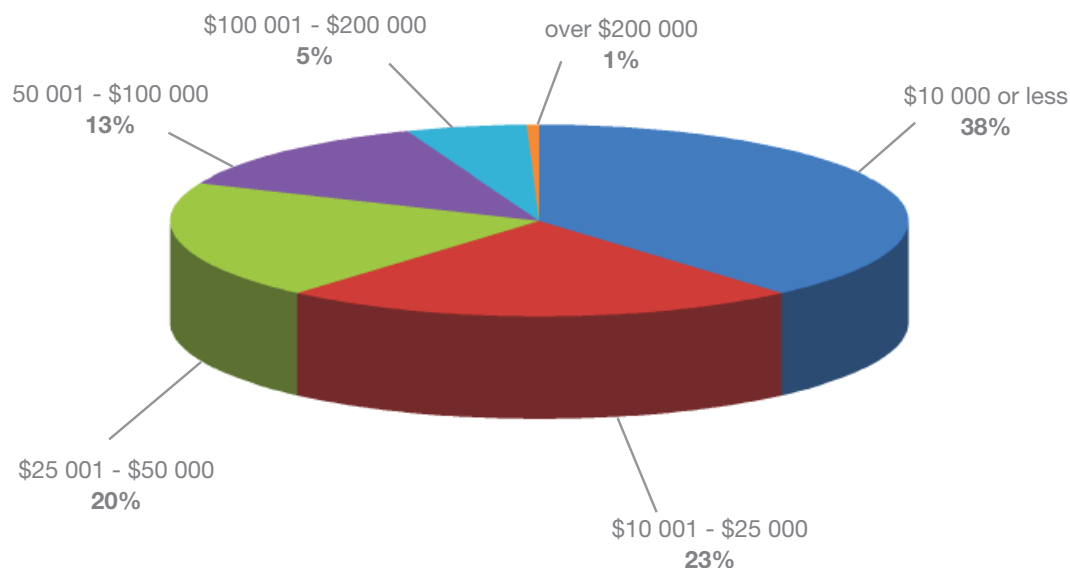


CHART 5: Proportion of general grants, by funding range: 2009 - 2010

In 2009-10, more than half of the grants were for small grants. All grants up to \$50 000 accounted for 88% of the grants awarded.



Where does the funding go?

CHART 6: Proportion of amount of funds awarded, by category: 2000 - 2010

Community Welfare continues to be the largest category of funding, followed by Youth and Cultural & Arts.

However, this category break-up should be treated with caution as the majority of grants have aspects which relate to more than one category. The chart reflects an alignment with a category for administrative purposes. The Board assesses each application on its merits against all other applications, and does not have funding caps for each category.

The category break-up is used by the Board for planning purposes, and to target particular promotion activities.

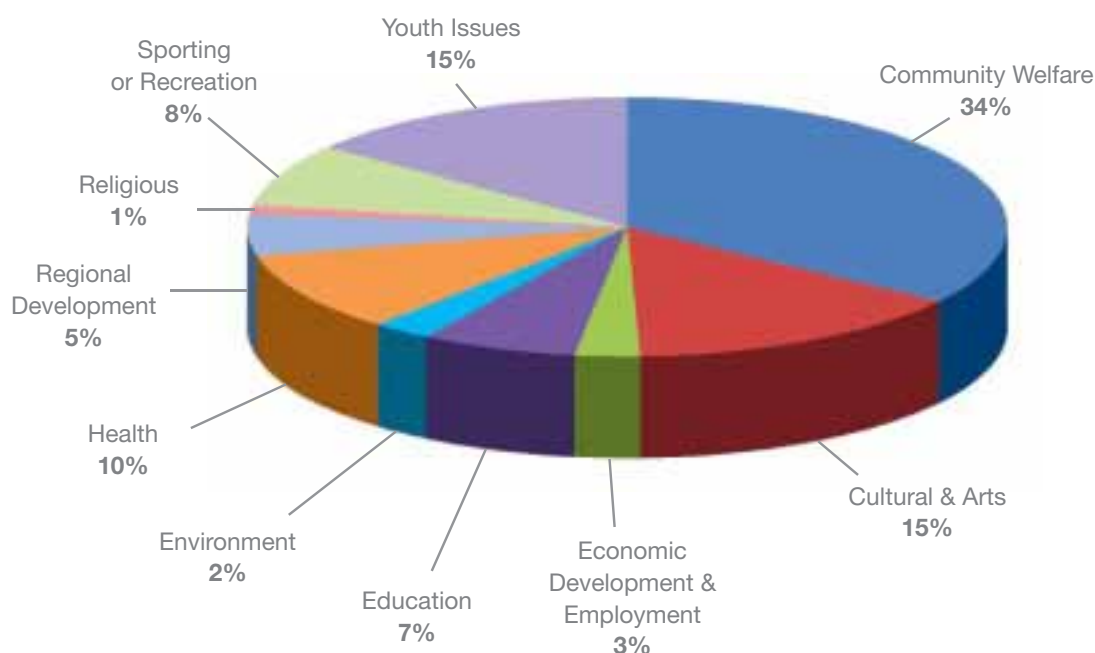
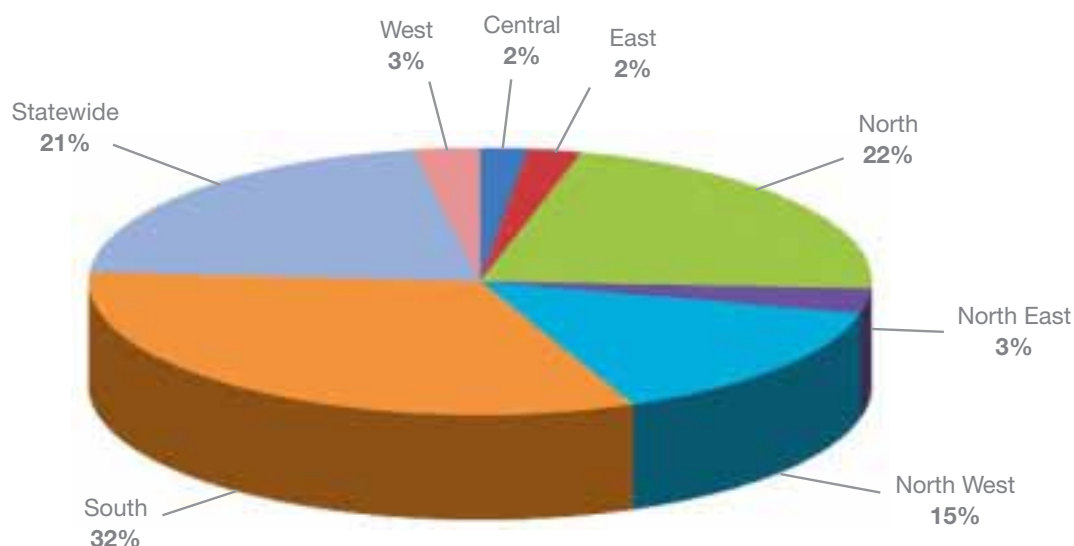


CHART 7: Amount of funds awarded, by region: 2000 - 2010

Over time, funding allocated has tended to follow the population distribution and the presence of service providers.

However, this regional break-up should be treated with caution as many projects have elements across more than one region, and the benefits to the community might flow to a number of areas. The chart reflects an assessment of the dominant region. The Board assesses each application on its merits against all other applications, and does not have funding caps for each region.

The regional break-up is used by the Board for planning purposes, and to target particular promotion activities.



Schedule of Grant Payments

1 July 2009 to 30 June 2010

| Organisation | Month | Amount (exc GST) |
|--|-----------|------------------|
| Anglican Parish Council of Channel and Cygnet | July | 19 822 |
| Anglicare Tasmania Inc | December | 44 420 |
| Anglicare Tasmania Inc | January | 50 000 |
| Apex Club of Tarooma Inc | August | 10 000 |
| Appin Hall Children's Foundation | March | 7 400 |
| Aspire A Pathway to Mental Health | July | 12 000 |
| Aurora Disability Services (Tasmanian Association of People with Disabilities and their Advocates Inc) | February | 19 448 |
| Australian Red Cross Society | September | 46 250 |
| Beaconsfield Child and Family Centre | April | 97 000 |
| Beaconsfield Mine and Heritage Centre | July | 70 000 |
| Bellerive Community Arts Centre | July | 5 000 |
| Bicheno Community Church Committee | December | 3 888 |
| Big hArt Inc | July | 55 640 |
| Birds Tasmania | July | 3 564 |
| Birds Tasmania | July | 5 343 |
| Blue Lagoon Christian Camp and Conference Centre | June | 47 990 |
| BookEnd Fund - University of Tasmania | July | 9 000 |
| Bridgewater Police and Citizens Youth Club | November | 53 120 |
| Burnie Arts Council | December | 15 150 |
| Burnie Community House Inc | July | 12 654 |
| C 3 Church | December | 7 823 |
| Calvary Health Care Tasmania Inc | December | 8 570 |
| Camp Clayton Camp Clayton | July | 3 500 |
| Campbell Town Swimming Committee | December | 1 288 |
| Centacare Tasmania | January | 86 086 |
| Central Coast Council | July | 30 000 |
| Cerebral Palsy Tasmania | December | 49 500 |
| Cerebral Palsy Tasmania | June | 40 000 |
| Channel Heritage Museum | November | 1 608 |
| Choir of High Hopes Hobart Inc | December | 4 500 |
| Cityprom Ltd | July | 10 000 |
| Clarence City Council | June | 10 000 |
| Coast Guard Freycinet | July | 18 182 |
| CREATE Foundation | December | 58 000 |
| Cremorne Bowls Club Inc | December | 5 000 |
| David Collins Leukaemia Foundation of Tasmania | August | 2 000 |
| Deloraine High School | July | 9 590 |
| Derwent Valley Economic Renewal Group Inc | July | 43 248 |
| Derwent Valley Youth Future Action Team | January | 36 500 |
| Diabetes Australia - Tasmania | November | 3 150 |
| Dodges Artisans and Farmers Market Inc | December | 1 994 |

| Organisation | Month | Amount (exc GST) |
|---|-----------|------------------|
| Drug Education Network Inc | January | 35 798 |
| Drug Education Network Inc | January | 49 604 |
| Eaglehawk Neck Community Hall Association Inc | November | 10 000 |
| Ellendale Hall Committee | January | 33 954 |
| Evandale History Society Inc | December | 18 710 |
| Evandale Light Railway and Steam Society Inc | December | 24 000 |
| Flinders Council | September | 100 000 |
| Friends of Deal Island (WILDCARE) Inc | January | 7 090 |
| Friends of Maatsuyker Island (WILDCARE) Inc | December | 9 300 |
| Friends of Tasman Island (WILDCARE) Inc | December | 4 000 |
| From the Heart to the Jewel | December | 4 330 |
| Fusion Australia Ltd | May | 99 955 |
| George Town Community Garden | August | 9 983 |
| Girl Guides Tasmania | July | 2 108 |
| Girl Guides Tasmania | December | 23 063 |
| Girl Guides Tasmania | December | 3 431 |
| Glenorchy City Council | December | 9 550 |
| Glenorchy City Council | January | 97 240 |
| Goodwood Community Centre and Shalom Community Garden | July | 5 800 |
| Green Ponds Progress Association | December | 14 760 |
| Headspace Northern Tasmania | September | 66 420 |
| Headspace Northern Tasmania | December | 66 420 |
| Headspace Northern Tasmania | April | 66 420 |
| Headway Support Services South Region Inc | July | 150 000 |
| Hobart Benevolent Society Inc | July | 10 000 |
| Hobart City Church of Christ | June | 9 965 |
| Hobart City Mission | September | 20 900 |
| Hobart City Mission | September | 71 570 |
| Hobart Women's Health Centre | November | 5 566 |
| Huon Valley Council | December | 3 220 |
| Huon Stronger Communities Taskforce | July | 7 600 |
| Independent Living Centre Tasmania Inc | January | 48 750 |
| King Island Historical Society | December | 7 565 |
| Langford Support Services Inc | January | 28 700 |
| L'Arche Hobart - Beni Abbes Community Inc | January | 18 049 |
| Lauderdale Playgroup and Child Health Association | September | 5 810 |
| Launceston City Mission | May | 79 219 |
| Launceston Musical Society Inc | July | 1 183 |
| Launceston Tramway Museum Society Inc | July | 3 770 |
| Lions Club of Bicheno Inc | December | 21 690 |
| Lions Club of Penguin | November | 9 600 |
| Lions Club of Wynyard Inc | November | 9 660 |
| Live Free Tassie Teen Challenge Tasmania Inc | July | 62 802 |
| Longford Fishing Club Inc | November | 18 590 |
| Lorinna Residents and Ratepayers Association Inc | January | 55 187 |
| Maritime Museum of Tasmania Inc | November | 5 900 |

| Organisation | Month | Amount (exc GST) |
|--|-----------|------------------|
| meenah mienne | March | 110 643 |
| Menzies Research Institute | December | 31 981 |
| Menzies Research Institute | December | 49 434 |
| Menzies Research Institute | June | 31 200 |
| Mersey Natural Resource Management | January | 48 750 |
| Mission Australia | July | 53 535 |
| Montagu Community Living Inc | November | 4 425 |
| National Heart Foundation of Australia (Tasmania Division) | January | 47 545 |
| National Trust of Australia | November | 9 300 |
| New Horizons Club | December | 6 375 |
| North Tasmanian Netball Association | December | 45 602 |
| North West Environment Centre | July | 9 600 |
| North West Motor Cycle Riders Association | November | 3 850 |
| Northern Suburbs Community Centre Inc | May | 19 157 |
| Oakdale Services Tasmania | December | 17 890 |
| Oatlands District Historical Society Inc | July | 3 000 |
| Okines Community House | December | 2 345 |
| Paraquad Association of Tasmania Inc | July | 16 600 |
| Paraquad Association of Tasmania Inc | January | 8 030 |
| Penguin Play Centre Parents and Friends Assoc Inc | July | 6 331 |
| Phoenix Community House | March | 8 240 |
| Playgroup Tasmania | August | 36 298 |
| Police and Citizens Youth Club Launceston | June | 49 555 |
| Proactive Agricultural Safety and Support (PASS) Inc | June | 9 999 |
| Project Queenstown Inc | July | 17 930 |
| Redwater Creek Steam and Heritage Society | January | 35 454 |
| Richmond Fellowship of Tasmania (Glenorchy Program) | November | 2 500 |
| RSPCA Tasmania Inc | July | 7 569 |
| Salamanca Arts Centre | July | 53 000 |
| School of History and Classics, Faculty of Arts, University of Tasmania | January | 50 000 |
| Scouts Australia - Tas Branch | November | 9 090 |
| Scouts Australia, Tasmanian Branch Taroona Scout Group | May | 14 700 |
| SecondBite | December | 41 385 |
| Self Help Workshop | November | 9 424 |
| Self Help Workshop | June | 6 745 |
| Smithton Community Group/Playgroup in the Park Circular Head Rural Health Services Inc | December | 1 700 |
| Smithton Community Group/Playgroup in the Park Circular Head Rural Health Services Inc | December | 1 930 |
| Snug Primary School Association | November | 8 850 |
| Sorell Men's Shed and Heritage Museum Inc | February | 2 920 |
| South Launceston Little Athletics Centre Inc | July | 9 322 |
| Southern Coastcare Association of Tasmania Inc | December | 32 625 |
| Southern Midlands Council | March | 5 355 |
| Southern Midlands Council | March | 189 500 |
| St Ailbe's Community Hall | September | 77 171 |
| St John's Parish, Richmond Archdiocese of Hobart | December | 13 557 |
| St Therese's School Outside School Hours Care | July | 8 450 |

| Organisation | Month | Amount (exc GST) |
|---|-----------|------------------|
| St Vincent de Paul Society | July | 34 200 |
| St Vincent de Paul Society | November | 30 518 |
| Support, Help and Empowerment | June | 5 000 |
| Sustainable Living Tasmania (Tasmanian Environment Centre) | November | 25 774 |
| Swanston Street Children's Centre | July | 8 600 |
| TADPAC Print | June | 50 000 |
| Tasmanian Aquaculture and Fisheries Institute | June | 39 749 |
| Tasmanian Association of Community Houses Inc | November | 2 000 000 |
| Tasmanian Association of Police and Community Youth Clubs Inc | June | 54 100 |
| Tasmanian Ballet Company Ltd | December | 46 376 |
| Tasmanian Bushland Garden | November | 2 440 |
| Tasmanian Centre for Global Learning | July | 69 584 |
| Tasmanian Landcare Association Inc | January | 7 922 |
| Tasmanian Regional Arts | March | 28 403 |
| Tasmanian Symphony Orchestra | December | 90 000 |
| Tasmanian Wood Design Collection | July | 8 876 |
| The Alannah and Madeline Foundation | December | 22 000 |
| The Caring Network Inc | August | 9 967 |
| The Far South Community Association Inc | July | 4 847 |
| The Living Boat Trust Inc | December | 10 000 |
| The Parkside Foundation | February | 9 600 |
| The Parkside Foundation | June | 64 583 |
| The Punchbowl Centre | December | 9 990 |
| The Renae Singers Inc | July | 9 774 |
| The Rock Community Church Inc | January | 5 487 |
| The Salvation Army (Tasmania) Property Trust | December | 67 000 |
| The Salvation Army (Tasmania) Property Trust | March | 112 000 |
| The Smith Family | September | 38 585 |
| The Smith Family | December | 49 900 |
| The Smith Family | February | 117 870 |
| The Trustees of the Diocese of Tasmania | February | 9 990 |
| The Windeward Bound Trust | November | 39 294 |
| Third Place Communities | June | 9 968 |
| Trustees of the Bothwell Sunday School Building | June | 15 000 |
| Uniting Church Presbytery of Tasmania | July | 26 935 |
| Valley Street Community Orchard Inc | July | 3 659 |
| Van Diemen Light Railway Society Inc trading as Don River Railway | November | 30 000 |
| Variety the Children's Charity | July | 20 532 |
| Whitellon Inc | July | 88 600 |
| Wild Cats Gymnastics Club Inc | January | 9 800 |
| Wildcare Inc | July | 8 392 |
| Women's Community Enterprise Inc | November | 1 548 |
| Woodbridge Community Association | January | 3 798 |
| Woolmers Foundation Inc | December | 3 500 |
| Zeehan Neighbourhood Centre | June | 7 000 |
| Zions Hill Church | July | 15 000 |



Contact Details

GPO Box 1350, Hobart, Tasmania 7001

Telephone (03) 6233 2800 (03) 6233 2920

Email admin@tascomfund.org

Internet www.tascomfund.org



Design & Print
Print Applied Technology
"environmentally responsible printer"