

TASMANIAN COMMUNITY FUND



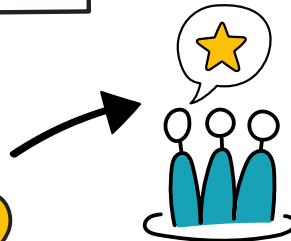
**BEST
CHANCE OF
SUCCESS**

Writing Better
Grant Applications



Below are the questions you should be answering to make your planning as effective as it can be.

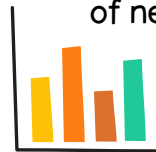
WHAT problem or issue are you trying to solve or WHAT opportunity are you looking to capitalise on?



WHY is the project important to the community?
How will they benefit and why will they support you?



Is there any evidence of need for your project?



WHERE will the project occur?
WHEN will it happen?

And how much will the project COST? Include all items - staff, volunteer support, materials and equipment.

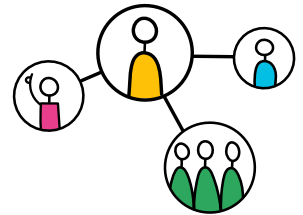


PROJECT

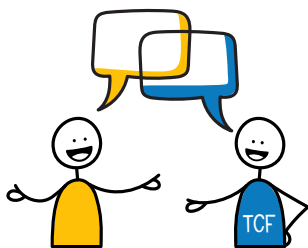
HOW will you deliver your project? Think about the stages/steps.



HOW?



WHO will work with you?
WHO will volunteer?
WHO will you ask for a letter of support explaining the benefits of the project?



Talk to the TCF before submitting – find out about our priority areas and get some sound advice.



WRITE



Assume the assessor knows nothing about your project or community.

**EXPLAIN EVERYTHING -
AVOID JARGON**



**FOCUS ON OUR
PRIORITIES &
CRITERIA**



**CHECK EVERYTHING HAS
BEEN INCLUDED AND
MATCHES YOUR PLAN**



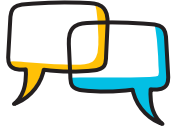
Double check
your budget.



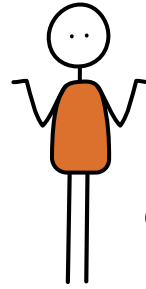
**UPLOAD ALL
ATTACHMENTS**



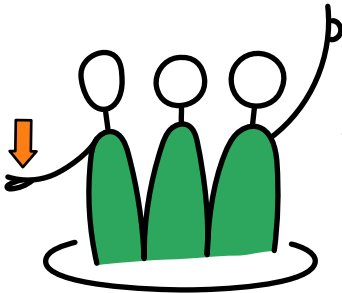
**CHECK YOU HAVE
ANSWERED
EVERYTHING**



TALK TO LOTS OF PEOPLE
TO SEE WHAT THEY THINK.
YOU MIGHT FIND MORE
SUPPORTERS!



GET SOMEONE
UNFAMILIAR WITH THE
PROJECT TO CHECK THE
COMPLETENESS OF YOUR
APPLICATION.

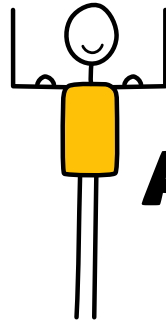


SHOW A CLEAR NEED
IN THE COMMUNITY

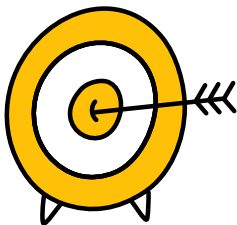
PROVIDE
EVIDENCE OF
COMMUNITY
SUPPORT



DEMONSTRATE
STRONG VALUE FOR
MONEY



STRONGER APPLICATIONS



PROVIDE CLEAR
EXPLANATION OF
PROJECT OBJECTIVES



SHOW THAT YOU HAVE
CONSIDERED ANY RISKS
ASSOCIATED WITH THE
PROJECT



DEMONSTRATE
ORGANISATION AND/OR
COMMUNITY CAPACITY
TO COMPLETE THE
PROJECT

drawn by kylie dunn
dinkylune.com



FIND OUT MORE

VISIT: www.tascomfund.org
EMAIL: admin@tascomfund.org
CALL: (03) 6165 8333

