

# STRATEGIC PLAN 2022–2030



## VALUES

### Community focused

– to connect with community and strategically respond to identified needs.

### Leadership

– to make strategic decisions, lead by example, innovate, influence for change, and facilitate of strong community leadership.

### Collaborative

– to work with others and foster partnerships to achieve wellbeing outcomes for communities.

### Integrity

– to be fair, reasonable, honest and accountable at all times and ensure transparency of process and probity in decision making.

# TASMANIAN COMMUNITY FUND

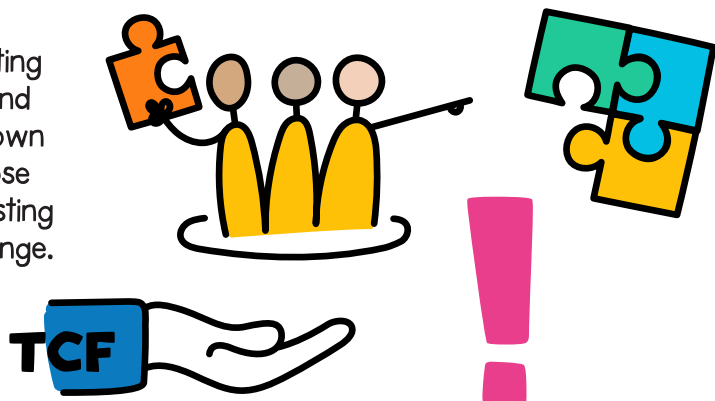


When we support a community to harness their passion and ideas, amazing things happen.



From now until 2030, we'll play a part in driving systematic change - enabling communities to develop, deliver and lead responses to their needs.

We will be supporting communities to find solutions to their own problems and those seeking to make lasting and sustainable change.



We're collaborating across philanthropy, government, industry and community to influence change that we know can help improve the lives of Tasmanians.



We'll be recognising and celebrating achievement, because we know when people see what can be done, it inspires them to try too.



We see a future where more community leaders have skills to help themselves and their community.

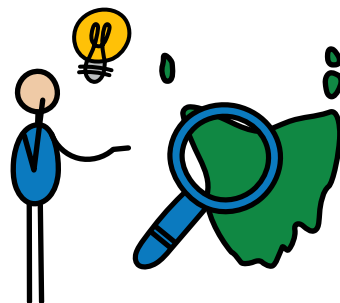
A future where we create deeper and more meaningful links in communities.



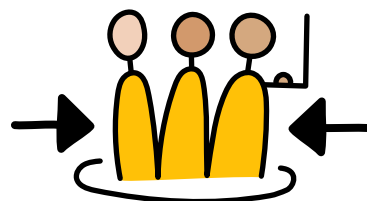
## There is still so much we can do... TOGETHER!

## Who We Are

Established in 2000, TCF is an independent, place-based organisation providing \$6-7 million a year to community programs.



We are in a unique position to support Tasmanian communities to become stronger, more resilient and more vibrant.



We will do this by focusing on increasing community wellbeing through the removal of barriers to learning.



### FIND OUT MORE

VISIT: [www.tascomfund.org](http://www.tascomfund.org)  
EMAIL: [admin@tascomfund.org](mailto:admin@tascomfund.org)  
CALL: (03) 6270 5843



**TASMANIAN  
COMMUNITY FUND**

INVESTING IN AND STRENGTHENING  
TASMANIAN COMMUNITIES