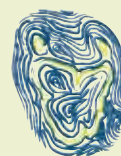


# Annual Report

# 2008



Tasmanian  
Community Fund

Making a difference



## Building the courthouse

*I believe this to be the most successful building ever erected in the colony.*

Source: John 1828



Approved design plan

John Macdonald and J. B. Macdonald, the architect and builder, transported for building with them a Carver's mill. Like many convicts, Macdonald was skilled in his work, and was employed, among other things, for being drawn during service at St. David's Church. He was working on the chapel at Kaituma when Campbell, in 1828 when he was appointed to the Colonial Office (now for justice and penitentiary), the world included the Government House and the present (small) factory he was granted a conditional pardon in 1835.

George Wood was a very turbulent character. Committed in 1823 for highway robbery (having robbed the Brighton Road Coach), he ended up in the chain gang at the same time as Macdonald for 'stealing by force the money'. His good report was 'bad'. He had been very 'bad'. He was given a conditional pardon in 1837.



A typical convict portrait, such as would have been made by Wood and Macdonald.

In 1836, Architect John Lee Archer provided the design for renovations, including the Magistrates and Clerk's rooms at the front. Other improvements included a new circular glass front for the judges, a 'fancy fence and gate', and a brick gang. The most striking improvement was the 'hogan-headed' railing for the courtroom, which was made by drawing a circular ruler into the original roof, which was then raised and plastered. This was quite a grand flourish for a rural courthouse - an attempt to add grandeur to the modest building.

The final additions came when Campbell began sitting of the Supreme Court around 1841, when a judge's room and jury room were added to a design by William Forster King.



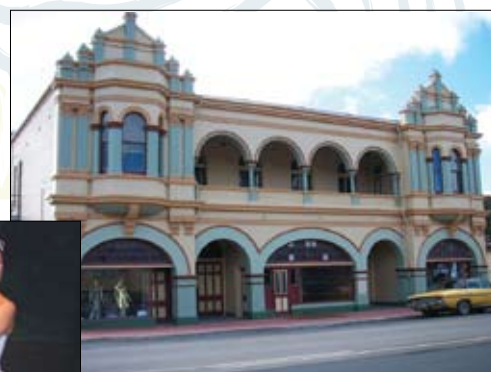
Plan from Lee Archer's suggestion of the Court House 1836

# Making a difference

# Contents

• Introduction .....	2
• Chairman's Message.....	3
• Executive Officer's Message.....	4
• The Board.....	5
• Grant Programs .....	9
• Successful Recipients.....	10
• Schedule of Grant Payments.....	21
• Financial Statements.....	24
◦ Income statement for the year ended 30 June 2008	
◦ Balance sheet as at 30 June 2008	
◦ Cash flow statement for the year ended 30 June 2008	
◦ Statement of recognised income and expense for the year ended 30 June 2008	
◦ Notes to the financial statements for the year ended 30 June 2008	
• Auditor's Certificate.....	32

## Cover images



*Clockwise, from above: The Tasmanian Ballet Company's production of Giselle; the restored Gaiety Theatre in Zeehan; an interpretation panel at the restored Supreme Court building in Oatlands.*



Hon Michael Aird MLC  
Treasurer  
Parliament House  
HOBART TAS 7000

Dear Treasurer

I have much pleasure in presenting the Annual Report of the Tasmanian Community Fund for the year ending 30 June 2008.

This report is submitted in accordance with Section 11 of the *Tasmanian Community Fund Act 2005*.

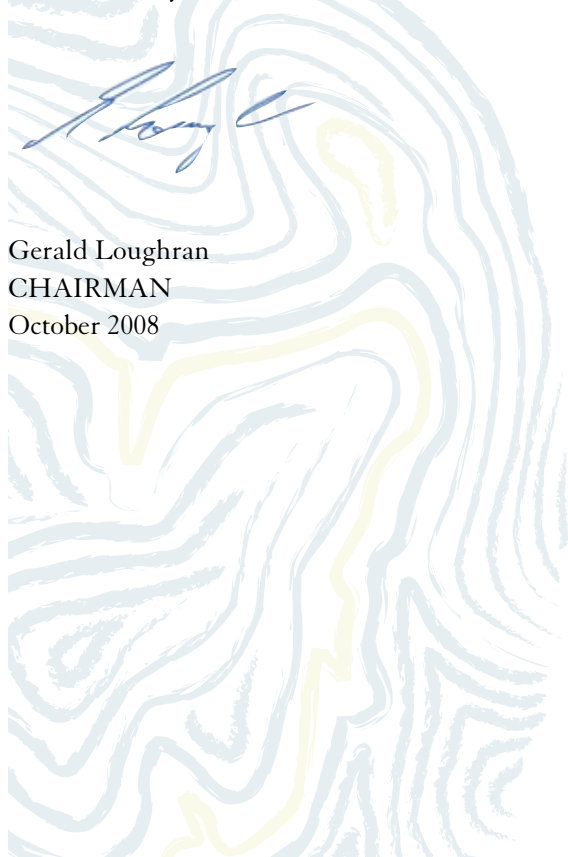
The TCF was established from the sale proceeds of the Trust Bank, a significant community asset, to fund worthwhile community projects in perpetuity. During 2007-08, in two general grant rounds, the TCF allocated grants of \$4.35 million to 115 projects around the State. This brings the total amount allocated since 2000 to more than \$35.0 million, covering some 977 projects.

You will see from the projects listed in this report that the TCF continues to support a broad scope of projects and organisations in all areas of the State. These range from local community groups purchasing minor but important equipment, through to programs delivered by large charities responding to complex needs.

In addition, this report highlights a number of projects we have supported over the years in the cultural and arts sector. We recognise the significant contribution this sector makes and are pleased to assist community organisations to promote a more vibrant and creative Tasmania.

I am sure you and your Parliamentary colleagues would join all Tasmanians in recognising the important place the TCF has in our community.

Yours sincerely



Gerald Loughran  
CHAIRMAN  
October 2008

GPO Box 1350  
Hobart, Tasmania 7001  
Telephone (03) 6233 2800  
6233 2920  
Facsimile (03) 6233 5690  
**Email: [admin@tascomfund.org](mailto:admin@tascomfund.org)**  
**Internet: [www.tascomfund.org](http://www.tascomfund.org)**

## Introduction

The Tasmanian Community Fund has provided grants to a broad range of not-for-profit organisations since 2000. The Fund was established from the sale proceeds of a community asset, the Trust Bank, to provide funds back to the community.

The Fund has established itself as a significant part of the community landscape over the past eight years, with more than \$35.0 million in grants allocated to 977 projects. With around \$5.0 million in funding each year to distribute, the Fund is comparable to the largest grants bodies across Australia.

Our Board has assessed almost 4 000 applications for funding, requesting a total of more than \$200 million.

## Making a difference

The Tasmanian Community Fund's vision is working with Tasmanians to *make a difference*. Some of the projects that have made a difference to the lives of Tasmanians are highlighted throughout this annual report.



*Radio Holiday in action*

### Big hART

Big hART is a multi-art-form non-profit organisation established to make art with people or groups experiencing marginalisation in a rural regional or isolated context. The company was established in 1992 by Scott Rankin and John Bakes, and is best known for its crime prevention work, arts intervention and community cultural development approach. Big hART began in Burnie and now operates nationally.

#### ***Radio Holiday – \$71 160 in 2004***

Radio Holiday was a community-based arts intervention project working with at-risk young people and remote communities. The project used composers and Australia's visual artists to work with young people to collect the narratives from disappearing coastal shack communities. Visual works and radio pieces were aired on local and national radio, and also heard alongside the visual art created during 10 Days on the Island. These pieces,

created with some of Tasmania's most marginalised young people, were the focus of public forums to generate positive debate about urban planning and the future of these small communities.

#### ***Drive – \$45 000 in 2007***

The project involves engaging young men at risk of autocide (fatal single vehicle accidents) in making a film, multimedia installation and website resource exploring issues that impact their lives.

#### ***This is Living – \$84 760 in 2008***

The project involves working with four Tasmanian communities, culminating in theatrical work and touring for 10 Days on the Island in 2009. The project involves senior citizens, skaters, young mothers, and professional artists in community collaboration and advancing social inclusion.



## Chairman's message

I am pleased to report on behalf of the Board of the Tasmanian Community Fund. After eight years of experience in assessing some thousands of applications the Board and our staff have become acutely aware of the special needs of the Tasmanian community.

We are continually impressed by the many organisations and so many dedicated volunteers who seek to meet those needs. It is a privilege to play our part in helping organisations to *make a difference*.

Our Annual Report is the principal way in which we are accountable to the Tasmanian community. This report contains information about each grant awarded this year, grants actually paid during the year (some of which were awarded in previous years), and our audited financial statements.

We have continued our theme from previous reports of highlighting grants in a particular funding category. This year, we have selected 'cultural and arts'. Celebrating and engaging in cultural and artistic endeavours is important for a vibrant community. We are pleased to support a broad range of projects in the sector, including the purchase of musical instruments and uniforms, restoring culturally significant buildings, preserving Aboriginal heritage, and assisting Tasmanians with a disability to engage with the community through artistic activities.

There are many great things about living in Tasmania and there are also some particular challenges we face. Take a look at the projects in this report, and you will see that our grants help both to enhance our Tasmanian lifestyle, and meet our particular and, at times, difficult challenges.

### Strategic Focus 2008-09 and beyond

During the year, we chose 'learning' as a key strategic issue for us to address over the next three years. We recognise that Tasmania falls behind in a range of educational measures, such as school retention rates, adult literacy levels and levels of skilled employment. While we will be careful not to fund those aspects of learning which fall specifically under the responsibility of government, we will work alongside a range of organisations and provide funding. We will make an announcement about this initiative late in 2008.

### Working in Partnerships

At our annual strategic review the Board determined to work even more closely with external partners and other funding bodies. Our objective is to endeavour to get more mainland funding into Tasmania. We also encourage organisations to work together and find it helpful in assessing applications if there is widespread community support and in particular where there is no duplication of effort or facilities.

### Board and staff matters

In December, inaugural member Andrew Kemp AM stepped aside after seven years service with the Fund. Andrew has been a wonderful source of wisdom in shaping the establishment and direction of the Fund. One of Andrew's particular interests is Tasmanian Aboriginal history. In 2005, Andrew chaired our targeted funding round on Tasmania's Aboriginal Heritage. The 'cultural and arts theme' for this report reflects Andrew's support and enthusiasm for this important aspect of life in Tasmania.

Ron Sanderson, General Manager of Brighton Council, was appointed to the Board in December 2007 to replace Andrew. Ron brings with him more than 20 years of experience in local communities around the State. Ron also spent 14 years as an engineer in the oil and gas industry working in Canada, Western Australia and Victoria. He is also a board member of the Tasmanian Chamber of Commerce and Industry.

I extend my thanks to the current Board members – Ron, Fiona Calvert, Catherine Fernon, Lynn Mason and Joan Walters. As a team, they combine excellent local knowledge, experience in the community and strategic thinking to support our funding decisions.

I would like to say thank you to the TCF staff during the period. Executive Officer Mark Green has been invaluable in supporting the Board to shape our funding strategies and refine our processes. Our Administrative Officers Kathy Woodham (until October 2007) and Melissa Gunn (from October 2007) provided excellent support.

The high esteem in which the community holds the Fund is a testament to both the Board's and staff's dedication and professionalism. As Andrew Kemp noted on his retirement, "The fact we conduct meetings in good spirit and most importantly – do the right thing by the Tasmanian Community – speaks volumes for what we have been able to do."

On a final note, the coming year will bring new events and challenges for us. We are particularly excited about the opportunity to award and celebrate our 1 000th grant, and begin a new targeted initiative around learning. We look forward to continuing to assist the organisations which make up the backbone of our community.

Gerald Loughran  
CHAIRMAN



*Chairman Gerald Loughran at the launch of the TCF-funded bus for the Association of Christian Homes, with John Westmore from ACH.*

## Executive Officer's message

Since we awarded our first grants in 2000, the Fund has now allocated more than \$35.0 million to 977 projects in every part of Tasmania. For a State with around half a million people, we are a significant source of funding for community organisations. The amount of funding available for distribution each year of \$5.0 million, places the TCF in a comparable position with the largest national funding bodies.

This year, we received 327 applications and funded 115 projects, amounting to \$4.35 million. Details of all these projects are included in this report. Some notable grants this year were:

- \$10 000 to Annie Kenney Young Women's Refuge to help homeless young women develop life skills;
- \$40 000 to Cerebral Palsy Tasmania for the provision of specialised mobile splints to assist people affected by cerebral palsy;
- \$51 962 to the Hobart Police and Community Youth Club for an outdoor recreation area;
- \$26 000 to the Orford Community Group for the installation of a children's play area;
- \$6 839 to the King Island Film Society to purchase a projector and sound system;
- \$50 730 to the Mental Health Council of Tasmania to develop a resource for young people who have a parent with a mental illness; and
- \$90 000 to St Giles Society to build a playground suitable for children with disabilities.

### Awards for projects

A number of projects supported by the TCF received awards in recognition of their contribution to the community. The Red Cross Save-a-Mate program, which is supported by the TCF in Tasmania, won an international award in February at the meeting of the UN Commission on Narcotic Drugs in Vienna. Save-a-Mate provides training, education, first-aid services and health promotion initiatives to help young people look after themselves and provide support to their peers. The award was for 'Innovative Drug Policy'. Save-a-Mate was commended as 'an important initiative in drug policy and a powerful illustration of how a health based approach to drug policy effectively and poignantly relieves suffering and

reduces drug-related damage to individuals, families and society'.

On a more local level, the Tynwald Park bicycle path was awarded a local government excellence award at the Local Government Association of Tasmania conference in June. The TCF provided \$20 450 towards the construction of the track which enables children to learn bicycle safety in a controlled environment. Construction was supported by the Derwent Valley Council and other groups. It has become a great success story for the area.

TCF staff presented a number of grant workshops and community forums during the year. These presentations enable community organisations to learn more about the Fund and the projects we support, and for the Fund to learn more about the community. We have seen an increase in the quantity and quality of applications from areas where these have been run. In the coming year, we plan to run some more workshops and forums in the Derwent Valley and on the West Coast.

### Staffing

In the past year, we had a change in Administrative Officer. Kathy Woodham filled the position on a temporary basis until October. Melissa Gunn joined the staff when the position was made full-time. Melissa brings with her broad experience in a range of administration roles in the private and public sector. As we continue to grow, Melissa has focused on ensuring our work systems can efficiently process the large number of applications and grants. My thanks to both Kathy and Melissa for providing excellent support to the Board during the year, and continually seeking to improve how we administer the funds.

The Department of Treasury and Finance provides assistance in managing our finances and human resources. Without that support, we would not be able to do what we do. My thanks also to Treasury cadet Patricia Scholwin for assisting in the preparation of this report.



**Mark Green**  
Executive Officer

*Mark Green and Tom  
Corey, from the Bass &  
Flinders Centre in George  
Town, discuss The  
Norfolk.*



## The Board

The TCF is managed by a Board of six members who, collectively, have sole and absolute discretion to make grants for worthwhile community purposes. The Board has developed a Code of Conduct governing the operation of its members to ensure that its activities are conducted according to the highest standards. The Code of Conduct is revised from time to time and is available on the TCF website at [www.tascomfund.org](http://www.tascomfund.org).

Board members receive remuneration in recognition of their responsible positions as trustees of a significant pool of public funding. Board remuneration is funded from the TCF's reserved-by-law appropriation. Details are included in the financial statements. Members of the Board have been chosen to have an appropriate mixture of financial and community-based experience, and are drawn from around Tasmania. By convention, three members are from the south, two from the North, and one from the North-West.

The members of the Board as at 30 June 2008 were:

### Gerald Loughran – Chairman

Gerald is a former chairman of the Trust Bank and the Trust Bank Foundation. Gerald is a director of a number of companies. He was the Managing Director of Loughrans Electrical & Furniture. Gerald is currently a Governor of the University of Tasmania Foundation, and a past president, Tasmanian Division, Institute of Company Directors. He has a long involvement in community organisations and resides in Hobart. Gerald was first appointed to the Board in 2000 as its inaugural Chairman and reappointed in 2005.

### Fiona Calvert

Fiona is the Manager Strategy and Planning for Aurora Energy Pty Ltd. Fiona's previous employment includes Manager, Social Projects Units, Department of Premier & Cabinet and positions with the Department of Treasury & Finance, Tasmanian Development Authority and ANZ Banking Group. Fiona resides in Kingborough, was first appointed to the Board in 2000 and reappointed in 2005.

### Catherine Fernon

Catherine lives on the North-West Coast and is currently Business Manager with the Institute of Regional Development at the University of Tasmania's Cradle Coast Campus. Catherine has many years' experience working in community development and education and has a keen interest in supporting community and cultural development activities at a local and state level. Catherine was first appointed to the Board in 2003 and reappointed in 2007.

### Lynn Mason

Lynn Mason is the immediate past-President of the Local Government Association of Tasmania, retiring in 2006 after 23

years as a Flinders councillor. She is a Director for Quadrant Superannuation Fund and Metro Tasmania, and chairs Tasmanian Affordable Housing Ltd. With her husband she runs farms on Flinders Island and near Carrick in northern Tasmania. Lynn was appointed to the Board in March 2007 and particularly enjoys the strong sense of the power of the Tasmanian community that comes through working with the Fund.

### Ron Sanderson

Ron Sanderson has extensive experience as an engineer and local government administrator. He is currently General Manager of the Brighton Council, with 20 years of local government experience within Tasmania giving him an extensive statewide network of contacts. Ron also spent 14 years as an engineer in the oil and gas industry working in Canada, Western Australia and Victoria. He is also a board member of the Tasmanian Chamber of Commerce and Industry. Ron was appointed in December 2007.

### Joan Walters

Joan Walters is a registered nurse with the majority of her experience in midwifery and child health. Joan is currently employed by Child Health and Parenting, Department of Health and Human Services. This role, combined with nine years of experience as an elected member of the Launceston City Council, provides her with a deep understanding of the issues for Tasmanian families and broader communities. Joan has wide experience in committee and board representation that have a particular focus on women, youth, child care, aged care, equity of accessibility and heritage. Joan was also on two selection panels during the year – The Examiner's Smarter Communities Award and the Women's Roll of Honour. Joan was first appointed to the Board in 2000 and has been subsequently reappointed in 2004 and 2007.

*The TCF Board and staff meeting in December. Standing, left to right, Ron Sanderson, Catherine Fernon, Mark Green, Melissa Gunn, and Lynn Mason. Seated, Fiona Calvert, Gerald Loughran, Joan Walters and Andrew Kemp (retired December)*



## Board appointments

In December, Ron Sanderson was appointed for a three-year term to replace Andrew Kemp AM, who stood down from the Board after eight years. Also in December, Joan Walters was reappointed for a two-year term. This was Joan's third term of appointment.



## TCF staff

TCF staff support the Board in undertaking its activities and manage the day-to-day operations of the Fund. Staff provide advice to potential grant applicants, arrange funding agreements for grant recipients, arrange grant payments, acquit grant reports and provide policy advice to the Board. Staff facilitate grant-writing workshops and community forums, and develop strong relationships with other grant bodies. Staff represent the Board at events, launches and provide advice to other grant bodies.

Staff do not have a formal role in grant assessment; however, they provide information and advice to support the Board's decisions. All funding decisions are decisions of the Board.

As at 30 June 2008, TCF staff members were:

### **Mark Green** – Executive Officer

Mark joined the Fund in May 2004. After growing up in Hobart and graduating with a Bachelor of Laws from the University of Tasmania, Mark has undertaken a variety of roles in the Australian Public Service in Canberra and Melbourne, including grant administration, policy advice, development of legislation and ministerial services. Mark returned to Tasmania in 2004.

"I have learnt so much about the community sector, and Tasmania, in the last four years. It's a great feeling to help community organisations do what they do best. It's very satisfying to watch and assist an idea take form, gain support, then be selected for funding by the TCF."

### **Melissa Gunn** – Administrative Officer

Melissa accepted the role of Administration Officer with the Fund in October 2007. Before joining the fund, Melissa held various administrative roles in Treasury including positions with the Liquor and Gaming branch, State Revenue Office, Government Prices Oversight Commission (GPOC) and the Office of the Tasmanian Energy Regulator (OTTER).

Melissa has completed a Diploma in Office Management and is keen to further develop her skills in the area of office and grant management.

"I absolutely love my role because we are responsible for giving out money to organisations in need of funding. This is quite different to previous positions I have held which have involved 'bringing the money in' rather than 'giving it out'.

"A highlight for me in my current role is undertaking site visits to the various organisations we have funded and viewing the work undertaken – a lot of which has been completed by volunteers. I feel a real sense of achievement when I see the smiles on their faces and I bounce out of bed to come to work each day because I know we really are making a difference."



*Executive Officer Mark Green presenting a grant-writing workshop in Hobart.*

## Community forums and workshops

To coincide with Board meetings, we hold community forums around the State. The forums are an opportunity for potential applicants to find out about funding opportunities available through the TCF, and for the Fund to hear about local issues. During the year, forums were held in Campbell Town and Burnie.

We also presented grant-writing workshops. These workshops provide community organisations with the skills to submit applications to a range of funding bodies. During the year, workshops were held in Bagdad, Launceston, Glenorchy and Kingston.

## Presentation at Board meetings

We like to understand our community. A number of community groups provided presentations to the Board to facilitate the Board's understanding of current issues. Presentations were received from:

- Tasmanian Council of Social Services;
- Tasmanian Association of Community Houses;
- National Disability Services;
- Northern Midlands Council;
- St Vincent de Paul;
- Department of Education;
- University of Tasmania; and
- The Salvation Army.



## Media events

TCF projects were promoted through a range of media stories and events. Many were picked up by the television and radio stations, and the major newspapers. Others were recognised through local newspapers. Some are listed below:



*Members of the community celebrate the opening of the new picnic shelter at Myrtle Forest, Collinsvale.*

### Myrtle Forest Site Development, Collinsvale

The TCF provided \$48 200 to the Tasmanian Conservation Trust to implement stage 1 of the Myrtle Forest development plan. This involved the redevelopment of the existing picnic shelter, the upgrading of the walking tracks, and the development of toilet facilities. The grant will also help address

persistent anti-social behaviour resulting in damage to the area. On 4 June 2008, a community celebration was held at the site. Sadly, shortly after the community celebration, vandals returned to the area; however, the community spirit remains strong to address and overcome the criminal behaviour by some.

*PASS chairwoman Anne Taylor (left), with TCF board member Lynn Mason launching the new website*



### Proactive Agricultural Safety & Support Inc

In November 2007, the TCF approved a grant of \$5 000 to the Proactive Agricultural Safety & Support Inc (PASS) towards the development of a new farm safety website to promote safe practices in rural industries and around the farm. The organisation was established in 2007 following the deaths of two

young farm workers when the irrigation pipe they were handling came into contact with overhead electrical wire. The official launch of the website was held at Toosey Day Centre on 14 May 2008. To view the website, please visit [www.pass.org.au](http://www.pass.org.au).



## The Association of Christian Homes for the Aged Inc

The TCF provided \$45 000 to the Association for Christian Homes for the Aged in 2007 to purchase a suitable bus to enable the association to provide a cost-effective, flexible and appropriate transport service for the elderly and disabled in the Kingborough municipality.

The Association for Christian Homes for the Aged held the bus launch on 12 June 2008 where volunteers provided a lovely morning tea for all to enjoy.

*From left, Gerald Loughran, Linda Tabor, John Westmore, Mark Green and Melissa Gunn with the newly purchased bus.*

## Starlight Children's Foundation Australia

In July 2007, the TCF provided a grant of \$16 440 to the Starlight Children's Foundation. The grant enabled Captain Starlight to make four visits in Tasmania to deliver distractive entertainment to seriously and chronically ill children and young people in Tasmania.

On 4 February 2008, Captain Starlight travelled across the galaxy from Planet Starlight and landed at Burnie Hospital for the first day of their three-day visit. They were greeted by three very enthusiastic teenage girls, one of whom had been discharged but didn't want to leave the hospital without first seeing Captain Starlight.

The girls had the opportunity to chat with Captain Starlight about their interests, home towns and shared some general silliness and magic tricks.

Captain Starlight left behind some balloons, flowers and silly

animals before moving on to spread some more Starlight Magic.

Day two of Captain Starlight's visit landed them in Launceston where they were greeted by two teenage boys who, according to the hospital's play therapist, had been really bored and not talking to each other very much. Captain Starlight used its special magic to help them break down the barriers and soon they were laughing and joking together.

The last day of Captain Starlight's visit before flying back to Planet Starlight landed them in Hobart where they were greeted by Spiderman. Spiderman and his brother had never met Captain Starlight before so they showed them all the various tricks – balloon animals, magic tricks, silly games and more.

It was a very busy three days for Captain Starlight with lots of kids to visit and heaps of smiles left behind.

## Arts Action Tasmania Inc

Arts Action is the statewide body in Tasmania with responsibility for information exchange, lobbying and policy development in arts and disability.

***Amalgamation – The 2nd Echo Ensemble – \$8 000 in 2006***

***Amalgamation – Tasdance project – \$8 000 in 2006***

The grants were used for two productions for the Amalgamation Festival that celebrates the diversity of communities and the unique contribution of people with disabilities.

***Access/No Access for me – \$44 000 in 2008***

The grant will be used to advertise and employ an artist to engage people with a disability and work with them to develop high-quality art and become more involved in cultural and arts. Arts Action will then select high-quality work for exhibition and distribution to mainstream organisations.

## Other events:

Board member Ron Sanderson and Administrative Officer Melissa Gunn attended Our Community's Best Practice in Grant-making Conference in Melbourne in February.

Some of the modules covered included:

- Defining funding relationships for more effective risk management & accountability;
- Getting marketing bang for your buck (and avoiding unwanted headlines);
- How to boost your grant making coffers in line with demand;
- Targeting disadvantaged groups for inclusion in your grants program; and
- Reviewing your grants program.

Arising from ideas discussed at that conference, the Board has initiated a small grant round from 2008-09 to make it easier to apply for amounts up to \$10 000.

# Grant programs

## Grant Rounds

The TCF holds two general grant rounds each year. The general grant rounds are held in February/March and July/August.

From time to time, we also hold targeted funding rounds. These rounds maximise the impact of funding by channelling investment into fewer, larger initiatives that have the capacity to achieve even greater benefits to the community. There have been three targeted rounds:

- Early Childhood Intervention and Prevention for At-Risk Children – \$1.0 million for three projects;
- Promotion and Conservation of Tasmania's Cultural Heritage – \$2.0 million for 31 projects; and
- Tasmanian Aboriginal Heritage – \$280 000 for seven projects.

## Grant Round 15

Grant Round 15 opened on 14 July and closed on 30 August 2007. We received 176 applications requesting \$8.7 million in funding. We approved \$2.36 million for 64 projects.

## Grant Round 16

Grant Round 16 opened on 16 February and closed on 27 March 2008. We received 151 applications requesting \$9 million in funding. We approved \$1.96 million for 51 projects. Due to the timing of the assessment process, the majority of these grants will be paid in the 2008-09 financial year.



*Members of the Suncoast Singers proudly show their new piano and sound system.*

## Suncoast Singers

The Suncoast Singers are based in St Helens and the surrounding area. They were formed in 1999 and provide entertainment for all members of families and encourage community participation. They perform at fundraising events, Anzac Day services and other community occasions.

***Suncoast Singers, an asset to the community of St Helens – \$2 377 in 2006***

The grant funded the purchase of a portable piano and public address system to enable the Singers to continue bringing joy to the north-east region.

## Furneaux Historical Research Society

The Furneaux Museum showcases the history of the Furneaux Group of Islands. The museum contains shipwreck relics, and there are other exhibits depicting local plants and animals and early settler life. Some of the buildings themselves reflect the history of the area, and include a mutton bird hut, which gives a glimpse into an island tradition.

The history of Wybalenna settlement is recorded in the Aboriginal Room, together with an exquisite collection of Aboriginal shell necklaces.

***Development of Furneaux Museum – \$150 000 in the Promotion and Conservation of Tasmania's Cultural Heritage targeted funding round in 2006.***

TCF funding was provided towards the construction of an additional building to be used for exhibitions, community activities and training. The Australian Government, Flinders Council and community members all contributed to the project. The new building was opened by Governor, William Cox.

***Display of Aboriginal Shell Necklaces – \$5 600 in 2003***

***Redevelopment of Aboriginal Room – \$5 952 in 2007 in the Tasmanian Aboriginal Heritage funding round***

Other grants have been provided to better display local Aboriginal shell necklaces and to redevelop the Aboriginal room.



*Members of the community preparing for the official opening of the new building.*



## Successful recipients

### Grant Round 15

#### Anglicare Tasmania Inc – \$150 000

To provide online counselling support and education for early intervention support for children, young people and their families in rural Tasmania.

#### Annie Kenney Young Women's Refuge – \$10 000

To develop workshops and training manuals to assist homeless young women to develop basic living skills.

#### Arts Alive Inc – \$14 000

To present New Media artwork in the Arts Alive Art space in central Launceston, through the purchase of appropriate hardware and software, along with upgraded lighting and sound systems.

#### Association for Christian Homes for the Aged Inc – \$45 000

To purchase a suitable bus to enable the association to provide a cost-effective, flexible and appropriate transport service for the elderly and disabled in the Kingborough municipality.

#### The Australian Kidney Foundation trading as Kidney Health Australia – \$2 798

To purchase a portable projector and laptop for volunteers, speakers and staff for the provision of education and information.

#### Australian Volunteer Coast Guard Association – Tasmania Squadron – \$4 697

To upgrade the safety of AVCGA volunteer rescue vessel crews.

#### The Beacon Foundation – \$89 000

To establish a Student Committee in all Beacon schools who will create and organise No Dole program events to develop students' vital career and personal skills.

#### Beaconsfield Child & Family Centre Inc – \$194 000

To construct a childcare centre offering early learning services and childcare for Beaconsfield and surrounding districts. 40 places will be available.

#### Big Hart Inc – \$45 000

To engage young men at risk of suicide (fatal single vehicle accidents) in making a film, multimedia installation and website resource exploring issues that impact their lives.

#### Brighton Heritage Association Inc – \$1 584

To purchase a display cabinet and bookcase to shelve the heritage room's growing reference library.

#### Burnie Arts Council – \$38 360

To develop young people through involvement in music education. The Burnie Strings Outreach program is a long-term commitment aimed at developing a three-year program that will grow the involvement of young people in music in their schools and in the community from primary years through to secondary in the public school system.

#### The Cancer Council of Tasmania – \$8 730

To develop Healthy Lifestyle Packs which include banners, Sid Seagull costume, and Powerpoint presentations promoting health messages for distribution to schools, councils and workplaces.

#### Campbell Town Area Community Service Board Inc – \$12 900

To address the issue of men's health (physical, emotional and social well-being) in the community: to engage the elderly, people with a disability, youth, veterans and other groups of men of the communities in both rural Australia and urban Australia, to specifically address issues of isolation, loneliness and depression; to

### Soldiers Memorial Avenue

*The Avenues Project' – \$88 500 in the Promotion and Conservation of Tasmania's Cultural Heritage funding round in 2006.*

*Redevelopment of the upper part of the Hobart memorial avenue – \$64 850 in 2007.*

The Avenue is the largest of over 40 Avenues of Honour in Tasmania, honouring those who died during service in the First World War, who have been identified. The main part of the Avenue consists of four rows of cedars planted along the eastern slopes of the Queen's Domain in Hobart.

The Avenue begins next to the Hobart Aquatic Centre. The first trees commemorate soldiers who died in the Gallipoli campaign. The Avenue crosses Davies Avenue and moves around the Domain, then passes between the old Tasmanian Cricket Association ground and the gunpowder magazine. The original Avenue continued to the northern end of what is now the Crossroads sports ground.

The first TCF grant funded a number of plaques and the development of a kit to be used for the restoration of 10 other avenues of honour around the state.



*The cover for the order of service held on Sunday, 3 August 2008 to mark the 90th anniversary of the inauguration of the Avenue, at the newly renamed Soldiers Memorial Oval.*

The second grant was a contribution towards the realignment of the northern part of the avenue around the current Crossroads sporting grounds. The grounds were officially renamed Soldiers Memorial Oval at the service to mark the 90th anniversary of the first planting.

## Friends of Freycinet Heritage



*Restoration of Cook's Hut under way.*

**Restore and Conserve significant historic buildings in Freycinet National Park – \$13 745 in 2006.**

The grant was to fund restoration of Cook's Hut on the Freycinet Peninsula and the 1920s Morey's Huts on Schouten Island. The buildings are principally used as shelters for walkers; however, they have a rich historical value for the area. Cook's Hut was built by graziers in 1885 and had fallen into disrepair. Volunteers, working with stone masons, have removed old stonework, mortar and rotting timber and have carefully rebuilt the walls and roof. Morey's Huts on Schouten Island have similarly fallen into a state of disrepair. The work has been undertaken by many volunteers with support from the Tasmanian Parks and Wildlife Service.



*Volunteers giving a fresh coat of paint to Morey's Hut.*

support the social interaction of men in transitional periods; and to share, disseminate and preserve the skills, abilities and interests that are relevant to the community.

### **Cerebral Palsy Tasmania – \$40 000**

To provide specialised mobile splints which offer freedom of movement by providing support to muscles and joints for people throughout Tasmania affected by cerebral palsy.

### **Creative Paper Mill Pty Ltd – \$50 000**

To develop tour products, collateral and training manuals and development of DVDs on Burnie's papermaking history including installation of a screen projection wall.

### **Deviot Community Association Inc – \$32 791**

To construct a multi-purpose community tennis court and recreation facility for the communities of Deviot, Gravelly Beach, Paper Beach, Robigana, Sidmouth, Kayena and Rowella.

### **Devonfield Enterprises – \$37 872**

To supply and install vinyl weatherboard cladding to Mac Wright House – a facility offering transitional accommodation to people with disabilities.

### **Eat Well Tasmania Inc – \$7 115**

To produce colourful vegetable and fruit costumes and promotional resources for use within the Tasmanian community to encourage healthy eating.

### **George Town RSL Club – \$3 500**

To revamp the Lefroy Avenue of Honour and expand its outreach through practical projects and educating programs.

### **Glenhaven Family Centre Inc – \$16 209**

To upgrade the Glenhaven cottage care home furnishings, appliances, kitchen, bedroom/bathroom linen and garden tools for compliance with the Department of Health and Human Services (DHHS) cottage care model.

### **Guiding Hand Tasmanian Inc – \$2 030**

To support lower socio-economic areas in the greater Hobart area and beyond delivering food, including leftover restaurant food products and bread to Hobart suburbs in a purpose-built trailer.

### **The Historical Society of the Municipality of Sorell Inc – \$4 350**

To digitise documents, papers and photographs related to the social history of the Sorell Municipality and to aid in ongoing collection and promotion.

## Edge Radio

As a community radio station and Hobart's only youth station, Edge Radio provides a mix of music, entertainment, local journalistic content and information to enhance Hobart's cultural landscape. Edge Radio broadcasts to the greater Hobart area on 99.3FM, and web casts to the world on [www.edgeradio.org.au](http://www.edgeradio.org.au).

### *Access to the airwaves – \$28,959 in 2004*

In 2004, Edge Radio was looking to expand its outside broadcasting capabilities particularly for those groups under-represented in the media such as young people, multicultural communities, indigenous groups and the unemployed. A strong focus was on giving young Tasmanians access to professional music industry training and development, and giving local artists greater opportunities to present their work to a wider audience.

The purchase of the equipment continues to provide opportunities for involvement in a range of events for young people.



*On air with Edge Radio's outside broadcast equipment.*

### *Infrastructure upgrade – \$9 306 in 2008*

A second TCF grant was awarded to purchase a new broadcast desk to continue to offer Edge's high-quality radio broadcasts.

## Hobart City Band Inc – \$3 100

To purchase a Daikin 8.2kW inverter/heat pump for the band room.

## Hobart City Council – \$100 000

To redevelop the '50 & Better Centre' to include a central state-of-the-art information and lifelong learning bug for older Tasmanians.

## Hobart City Council – \$64 850

To construct a new circular path around Crossroads Oval to reinstate Soldiers Memorial Avenue and complete planting of 118 trees to replace those lost.

## Hobart Police & Community Youth Club Inc – \$51 962

To complete preparation of an outdoor recreation space, installation of purpose-built outdoor fitness machines and BBQ area.

## Hobart Women's Health Centre – \$6 561

To provide an electronic data system for records and medical information access that will streamline processing of information, add to privacy and safety, and enhance the ability to attract and retain general practitioners.

## Holyoake Tasmania Inc – \$29 723

To paint the interior of the building, fit a new hot water cylinder, replace copper piping and old tapware, re-position reception counter, re-carpet all floors, replace kitchen cupboards and sink and general maintenance.

## Interweave Arts Association Inc – \$84 477

To promote full inclusion, access and cultural experience for people with disabilities in the arts.

## Is Theatre Ltd – \$10 468.90

To purchase much-needed theatre audio equipment to replace ageing infrastructure benefiting Is Theatre's audiences, artists and users of the much-loved Backspace Theatre.

## Kingborough Gymnastics Committee Inc – \$139 822

To provide specialised equipment and wheelchair access in the new Learning Centre in order to introduce new programs to include rehabilitation programs, programs for children with special needs, programs for people with disabilities and social interaction programs.

## Kingston Online Inc – \$1 668

To fit a block-out curtain system in the Kingborough community training room to reduce ambient light during multimedia presentation included in training programs.

## Lifeline North-West Tasmania Inc – \$56 078

To purchase a van and forklift to service all Lifeline shops and warehouses and collection of recycling bin donations.

## Maranoa Heights Community Centre Inc – \$7 680

To provide extra-curricular activities to high school and college students of the Kingborough area in three disciplines – visual arts, creative writing and music.

## Menzies Research Institute, University of Tasmania – \$76 588

To identify and recruit families to provide a genetic resource for research to identify the genes contributing to prostate cancer in the Tasmanian population.



## **Menzies Research Institute, University of Tasmania – \$130 000**

To develop a self-sustaining educational, health-mentoring resource for the geographically dispersed Tasmanian Cystic Fibrosis community. This will be supported by smart information technology systems (SITS).

## **Mersey Natural Resource Management Group Inc – \$17 900**

To reduce the substantial cost to the community posed by trees that for one reason or another need to be removed.

## **Mersey Natural Resource Management Group Inc – \$68 872**

To increase dramatically the on-ground environmental works completed each year by the Mersey NRM by providing machinery to assist the Work for the Dole team.

## **Mersey Police and Community Youth Club – \$40 645**

To run youth-focused activities in partnership with youth and communities of the Mersey region.

## **Montagu Community Living Inc – \$2 785**

To purchase a lifting device to assist residents to access their own bath and spa without facing restrictions.

## **The Mountain Festival Inc – \$10 000**

To provide community-based activities for the 2008 Mountain Festival, including the 4th biennial Sculpture Trail, and Children's Day on the Sculpture Trail which is a large-scale community performance focused on the theme of global warming.

## **Mudlark Theatre Inc – \$5 098**

To purchase Acromats for Mudlark Theatre's rehearsal and training space.

## **Musica Viva Tasmania – \$72 000**

To purchase a refurbished concert grand piano for use in international concerts and by community concert presenters in the Hobart Town Hall.

## **National Trust of Australia (Tasmania) – \$29 100**

To address the most critical building integrity deficiencies at the National Trust's heritage property Oak Lodge, Richmond, including rectifying the following critical deficiencies: failed roof and roof drainage, chimney integrity, and substantial water damage to internal walls and ceilings.

## **Oakdale Services Tasmania– Oakdale Lodge – \$9 640**

To purchase new and upgrade old equipment and materials that allow various forms of mind and body stimulation, relaxation and entertainment to be used.

## **Orford Community Group – \$26 000**

To provide a safe, innovative, and challenging play system to stimulate and encourage physical activity and social interaction for children of all ages.

## **Police & Community Youth Club Launceston – \$74 249**

To provide and promote the health benefits of outdoor adventure-style activities to young people (under 18), particularly those who are disadvantaged or at risk in the community.

## **Tranmere-Clarence Plains Land and Coastcare Inc**

*Old Rokeby Historic Trail revisited – \$4 400 in the Promotion and Conservation of Tasmania's Cultural Heritage funding round in 2006.*

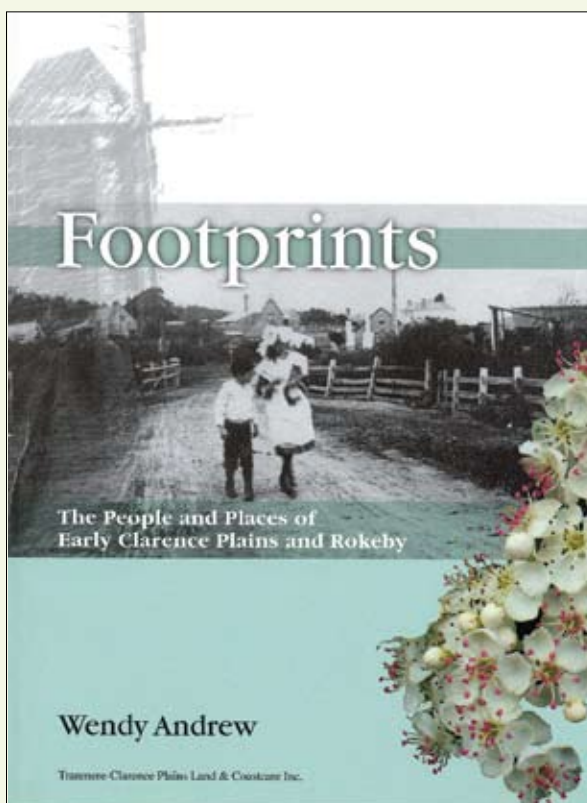
The TCF funded the production of a book on the history of the Clarence Plains area. The book, called Footprints – the people and places of early Clarence Plains and Rokeby – will increase knowledge of the local area. The Clarence City Council also contributed to the costs of production.

Wendy Andrews' book builds on the work previously undertaken in developing the Old Rokeby Historic Trail brochure funded by a Centenary of Federation Community Projects grant.

The book covers a number of aspects of the history of the region including its Aboriginal heritage, the influence of Reverend Robert Knopwood, schools and education, sports and entertainment, developing an identity, and the 1967 bushfires.

The book was launched by the Minister for the Arts at a ceremony at The Barn in Rosny, another TCF-funded project highlighted later in this report.

*The book's cover shows the Main Road, Rokeby, c1910.*



### **Tasmanian Ballet Company Ltd**

The Tasmanian Ballet Company provides an official statewide performing classical ballet company showcasing all major ballet productions as well as local choreography.

The company has a focus of classicism, and as such appeals to a wide audience. The company is committed to making high-quality classical ballet accessible to all Tasmanians, especially those living in regional areas of the state.



#### ***The Nutcracker – \$3 640 in 2005***

The grant was used to purchase a dance floor and ballet barres and extensions, to facilitate rehearsals for *The Nutcracker*.

#### ***Giselle – \$19 884 in 2006***

The grant was used for the 2007 tour of *Giselle*, including accommodation, transport freight, transport fares and travel allowance.

#### ***The Sleeping Beauty – \$7 755 in 2008***

The grant will be used to purchase uniforms and equipment to enable the Tasmanian Ballet to tour Tasmania throughout October 2008 performing a traditional style of ballet.

*Hilarion pleads with Myrtha, the Queen of the Wilis, Act 2 – Tasmanian Ballet Company's production of Giselle.*

### **Port Sorell Lions Club Inc – \$10 570**

To line the children's paddling pool as part of an overall project for the maximisation and multi-use of the Panatana Family Park by individuals, families and visitors of the Port Sorell area.

### **Proactive Agricultural Safety & Support Inc – \$5 000**

To reduce deaths and injuries on Tasmanian farms by providing easily accessible web-based information on farm safety and on safety audit, education and training resources.

### **Royal Guide Dogs Association of Tasmania – \$38 000**

To purchase various equipment including fencing, pup and adult dog enclosures, and seminar costs (including travel) for the Cognitive and Psycho-Motor Development for Guide Dog Puppies.

### **The Salvation Army Property Trust – \$63 717**

To re-roof the Hobart Bridge residential drug and rehabilitation centre.

### **Scouts Australia, Tasmania Branch – Rover Council – \$5 000**

To provide a range of sport and entertaining options for both Scouting and non-Scouting groups.

### **S.H.E – Support, Help and Empowerment– \$10 000**

To empower women to leave a domestic violence situation by removing the barrier of violence towards a loved pet.

### **St Vincent De Paul Society (Tas) Inc – \$41 542**

To replace canvas bales with steel-framed containers which will stack in a safe manner, removing risk of injury for volunteer workers.

### **Clarendon Vale Neighbourhood Centre – \$12 000**

To purchase a second ute (including on-road costs) for delivering garden and home maintenance services for local residents and the community.

### **Tasmanian Equestrian Centre – \$26 500**

To reduce fire hazards, develop public walking trails and plantations, and maintenance of existing facilities at the Tasmanian Equestrian Centre at Lauderdale.

### **Tasmanian Family History Society Inc – Launceston Branch – \$3 395**

To produce, on CD-ROM, a photographic image of each tombstone and memorial, index and produce a CD to assist with family history research.

### **Tasmania Youth Orchestra – \$24 430**

To purchase eight instruments to work towards allowing the Tasmanian Youth Orchestra to have a full complement of orchestral players.

### **Tastex Knitwear Inc – \$41 229**

To provide industry-recognised training for people with intellectual disabilities in the operation of embroidery machinery through the purchase of an embroidery machine, associated computer equipment, and the renovation of a workspace.

### **The Smith Family – \$67 000**

To develop a financial literacy and matched savings program for low-income families to save for their own or their children's education. Every dollar saved will be matched up to \$1 000.

### **Westbury Community Health & Day Care Centre Inc – \$12 199**

To purchase equipment and consumables to support the functioning of a metalwork project involved in skilling up long-term unemployed in all aspects of metal fabrication techniques to enhance their opportunity of gaining future employment in this area.

### **West Coast Heritage Ltd – \$47 800**

To link together the last five years' development of the Bush Power Heritage Adventure with pathways, interpretation and landscaping and to provide preparatory works for the next five-year plan.

### **Wyndarra Centre Inc – \$49 993**

To renovate the administration area to complement other renovations, install new filing system and shelves for storage of records, and make the area warm and inviting.

### **Wynyard Community Garden – \$3 780**

To install Krail metal edging for pathways as part of stage two of the demonstration community garden in Wynyard.



*The restored Gaiety Theatre in Zeehan*

### **West Coast Heritage Authority**

The West Coast Heritage Authority facilitates the identification, coordination and preservation of heritage assets of the West Coast. It manages and develops a range of heritage facilities on the West Coast.

***Restoration of the Gaiety Theatre, Zeehan – four grants totalling \$96 559 from 2003-2006.***

The grants went towards weatherproofing the building, improving the amenity of the toilets, repairs to the roof, ceiling and floors, painting and other repairs.

The improvements have returned the building to its former glory, when it was the largest concert hall in Australia, seated 1 000 people, and hosted concerts from Dame Nellie Melba, Enrico Caruso and the All Male Welsh Choir.

***Bush Power Heritage Adventure at the West Coast Pioneer's Museum – two grants totalling \$6 840 – 2002 and 2007***

The museum provides an insight into the history of western Tasmania and demonstrates the tenacity of the pioneers who settled the area. It is renowned as a significant regional museum. The grants have been used to redevelop one of the key attractions at the museum.

### **Oberek Dance Ensemble**

Oberek is the Polish Dance Ensemble that has been operating in Hobart for over 50 years. The organising committee works to instil a sense of national pride in dancers and share the rich Polish culture with the wider Tasmanian community. Oberek has around 60 dancers from juniors to seniors and performs at a wide range of community events, such as Christmas parades, Multicultural Week, tulip festivals and school fairs. The group also travels interstate.

***Oberek junior costumes – \$4 980 in 2006***

In preparation for the Pol-Art 2006 Festival, a major national event held in Hobart that year and attracting national and international participants, Oberek required new junior uniforms. A strong factor in the TCF approving the grant was the significant amount of funds raised for their senior uniforms.

The uniforms have proved to be a great hit with the dancers and audience members.



*Junior members of the dance group perform while displaying the uniforms funded by the TCF.*



## Grant Round 16

### Agola Kapuk Association of Southern Tasmania Inc – \$10 000

To promote social integration of the new migrants into the wider Tasmanian community through the promotion of cultural activities, arts and recreation.

### Anglican Parish of Kingston – \$37 216

To provide facilities enabling children, youth, adults and seniors in the Kingston community to engage in age-appropriate activities that help forge relationships and enhance well-being.

### Annie Kenney Young Women's Refuge – \$9 533

To purchase exercise equipment necessary to establish a health and fitness program to encourage physical and emotional well-being for clients.

### Arts Action Tasmania Inc – \$44 000

To advertise and employ an artist to engage people with a disability and work with them to develop high-quality art and become more involved in culture and arts. Arts Action will then select high-quality work for exhibition and distribution to mainstream organisations.

### Australian Red Cross Society – \$92 500

To focus on the delivery of save-a-mate Talk Out Loud Tasmania workshops and save-a-mate alcohol and other drug emergency courses across Tasmania. Talk Out Loud, a peer education initiative of save-a-mate, aims to raise awareness and knowledge of mental health issues.

### Big hART Inc – \$84 760

To work with four Tasmanian communities, culminating in theatrical work and touring for 10 Days on the Island in 2009. 'This is Living' involves senior citizens, skaters, young mothers, professional artists, community collaboration and social inclusion.

### Cancer Council Tasmania – \$24 694

To purchase a Nissan X-Trail to transport patients to treatment from remote areas.

### Carers Association of Tasmania Inc – \$42 387

To purchase new office furniture to create an efficient and effective working environment for carers.

### Central North Wildlife Care & Rescue Inc – \$22 520

To connect essential services (including electricity and plumbing connection, fittings, water and septic tanks) to a purpose-built community-based native wildlife rescue and environmental education/field centre for the NW region.

### Council on the Ageing (Tasmania) Inc – \$13 965

To develop the 10th peer education topic in the form of a training kit, 'Motivate to Move' and to educate the elderly on the benefits of physical activity and the options available in their community.

### Dutch Australia Society 'Abel Tasman' Inc – \$3 840

To purchase a marquee to enhance the promotion, at community events, of the cultural and historical heritage that links Tasmanians to the Netherlands.

## Terrapin Puppet Theatre Company

Terrapin was established in 1981 to create and present puppetry of excellence that encourages broad access and participation. Productions are designed to appeal to schools, families and festivals.

### *The Very Persistent Gappers of Frip – \$13 068 in 2004*

The TCF funded *The Very Persistent Gappers of Frip*, "...a highly original exploration of community spirit – an examination of how we co-exist with each other and the environment we live in...", to tour seven special schools, a hospital and four remote schools on Bruny, Flinders, Cape Barren and King Islands. The production was very well received by the audiences, with many having had little opportunity to see live professional puppetry productions.

### *Heartburn Hotel – \$10 982 in 2006*

In 2006, the TCF supported the performance of *Heartburn Hotel* on King, Flinders and Cape Barren Islands. *Heartbreak Hotel* is "...based on the classic Commedia art form, but given a distinctly Australian flavour. Set in an old-style rural Aussie pub, the show is traditional puppet theatre at its rollicking best."

*Leah Purcell and Sarah Duffus displaying some of the puppets from The Very Persistent Gappers of Frip, which the TCF funded in 2004 to take to remote and regional locations.*



## Eastern Shore Community Health Centres Auxiliary – \$6 480

To refurbish the meeting hall at Clarence Community Health Centre.

## Edge Radio – \$9 306

To purchase a new broadcast desk that is imperative to Edge Radio's operations.

## Port Sorell First Responder Unit Social Club – \$4 400

To purchase various equipment, including blood pressure monitor, IBM notebook and data projector, and Unicom pager to enable volunteers to provide a professional service when responding to medical emergencies in the Port Sorell, Hawley and Shearwater areas.

## Forcett Community Hall Committee Inc – \$2 686

To install gutter guards to prevent build-up of debris at the Forcett Community Hall.

## Greek Orthodox Archdiocese of Australia – Greek Welfare Centre (Hobart) – \$7 822

To purchase crucial office equipment and a bain marie stand for use by volunteers to cater for migrants and recently arrived refugees at the Greek Welfare Centre in Hobart.

## Glenorchy City Council – \$31 794

To purchase a Liberty wheelchair swing and for installation of fencing at the Montrose Foreshore Community park.

## Hobart Benevolent Society Inc – \$10 846

To purchase the necessary equipment to undertake the Renaissance program which will encourage self-worth, pride, and confidence of individuals. Craft, art, IT and writing activities will be undertaken.

## King Island Film Society – \$6 839

To purchase a projector and surround sound system to provide top-class picture quality and full surround sound to its members and the wider community.

## Launceston City Mission Inc – \$115 000

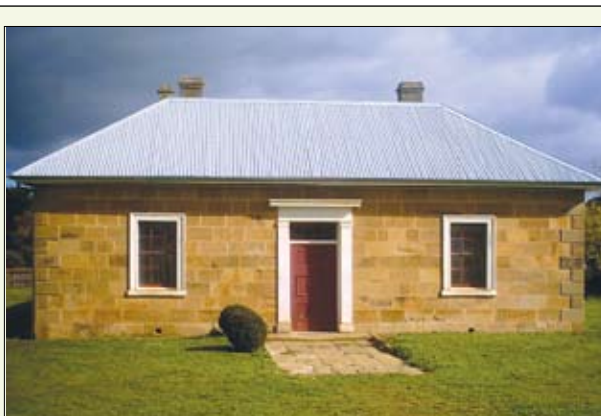
To purchase a vehicle to support clients to and from appointments and to provide supported accommodation to those in need on the North West Coast of Tasmania. Funding will assist with the purchase of furniture and minor renovations and ongoing service costs.

## The Leukaemia Foundation of Australia Ltd – \$30 000

To purchase a vehicle to provide courtesy transport for leukaemia, lymphoma, myeloma and related blood disorder patients to and from treatment centres within Tasmania.

## Levendale and Woodsdale History Rooms Inc – \$44 250

To purchase materials to build two sheds for the Sheep Shearing Interpretation and machinery/men's shed, including the supply and installation of electricity.



*The Supreme Court building in Oatlands (above) and an example of one of the interpretation panels (below).*

## Southern Midlands Council

### Oatlands Supreme Court Interpretation – \$33 500 in 2006

The project is to allow public access to, and interpretation of, the significant Oatlands Supreme Court building. The building is the only one remaining intact from the former Oatlands Military Precinct. It is a convict-built, Georgian sandstone building and is part of the oldest Supreme Court building in Tasmania. It has been used for a range of purposes, including private domestic use, educational facilities, chapel, police offices, and community uses.

The TCF funding will be used towards brochures and interpretation panels, display cases, viewing areas, signage and a model of the military precinct. The Southern Midlands Council was also contributing to the project. The project is to be completed in the latter part of 2008.



## Lifeline North-West Tasmania Inc – \$29 439

To purchase a Nissan X Trail 2.5 Litre ST3 to provide transport for the counselling services manager to enable delivery of the telephone counsellor training program.

## Lifelink Samaritans (Tas) Inc – \$23 600

To increase awareness of Lifelink Samaritans by promoting befriending services including the new service established to support survivors of suicide – 'Support after Suicide' – through promotion of the website, publications, and distribution of marketing material.

## Mountain Festival

The Mountain Festival creates exciting and innovative arts projects while linking together community values, cultural history and the sense of place that is invoked by an inspirational natural environment. The link between arts and environment has been an ongoing inspiration for Tasmanian artists and has created a global reputation for artistic excellence. Being community-based the festival provides opportunities for participants and audience to explore and celebrate our uniqueness.

Mt Wellington, part of the much larger Wellington range, is an important part of that uniqueness and is indeed a major landmark for the south-eastern area of Tasmania through both its topographic power and cultural value. The mountain creates a physical link to the Tasmanian Wilderness World Heritage Area. Previous festival events have explored the unique biology of Mt Wellington through many different artistic vehicles including giant puppet performances, sculpture and music.

### ***Windpiece – \$5 000 in 2005***

The grant purchases instruments for performances including wind machines, thunder sheets, stroke rods and rain sticks.



*A colourful activity from the children's trail at the 2008 event*

### ***The Mountain Festival 2008 – \$10 000 in 2007***

The funds were used to provide community-based activities for the 2008 Mountain Festival, including the 4th biennial Sculpture Trail, and Children's Day on the Sculpture Trail which is a large-scale community performance focused on the theme of global warming.

## **Margaret Young Memorial Group – \$6 678**

To develop the Margaret Young Memorial oasis at Ockerby Gardens.

## **Mental Health Council of Tasmania Inc – \$50 730**

To develop a resource for young people who have a parent with a mental illness. The project also aims to improve communication, self-esteem and understanding of emotions. A book will be published and distributed to other children to learn from into the future. A project coordinator will be recruited.

## **Mersey Natural Resource Management Group Inc – \$97 500**

To build office training and workshop facilities for support of community and Natural Resource Management works across Northern Tasmania.

## **Multiple Sclerosis Society of Tasmania – \$12 960**

To establish a community service website to enable people who are confined to wheelchairs to have opportunities for holidays.

## **National Trust of Australia (Tasmania) – \$34 500**

To establish a sustainable model for the long-term maintenance of the National Trust property in Launceston.

## **North East Education & Training Centre Inc – \$38 646**

To provide mentors for teenagers who are disengaged or at risk of disengaging from school. Identified students will be provided with employability and/or trade skills to assist with the successful transition from secondary school into employment or further education.

## **Ravenswood Community Garden – \$22 620**

To recruit, select and train mentors for development of the Growing Our Future mentoring program within the Ravenswood Community Garden.

## **Richmond Advisory Committee – \$41 123**

To transform 1 500 square metres of derelict land into a water-wise native garden with ongoing economic, social and educational benefits for Richmond, Tasmania and visitors.

## **St David's Cathedral Foundation Ltd – \$45 000**

To install Thermofilm radiant cassette under-pew heating for St David's Cathedral.

## **St Giles Society Inc – \$90 000**

To build a playground for children in respite that will allow them to play and undertake physical activity. The playground will include a Liberty swing (wheelchair swing), a sensory playground and in-ground trampoline.

## **St Vincent De Paul Society (Tasmania) Inc – \$15 000**

To upgrade the volunteer work area with heating.

## **St Vincent De Paul Society (Tasmania) Inc – \$47 121**

To replace the roof and fit insulation to roof cavity of Marillac House at 32 Brisbane Street, Launceston.

## **Sea Rescue Tasmania Inc – \$145 084**

To purchase a rescue vessel to replace Sea Rescue 1.



### **Self Help Workshop Inc – \$55 000**

To upgrade the training area of the production division to showcase a building that exceeds best practice working conditions for people with a disability.

### **Society for Multiply Disabled People of Tas Inc – \$38 200**

To establish wheelchair friendly kitchens and hoists in the new units being built in Hodge Avenue.

### **Tamar Sea Rescue Services Inc – \$52 000**

To extend the existing training facility to house emergency rescue boats and associated equipment.

### **Taroona Neighbourhood Garden – \$9 000**

To purchase fencing, trees and power tools to support the development of the Taroona Neighbourhood Garden organic gardening education centre.

### **Tasmanian Ballet Company Ltd – \$7 755**

To purchase uniforms and equipment to enable the Tasmanian Ballet Company to tour Tasmania throughout October 2008 performing a traditional style of 'The Sleeping Beauty'.

### **Tasmanian Aboriginal Centre**

The Tasmanian Aboriginal Centre was formed in 1973, providing services to all Aboriginal people in Tasmania. TAC programs include legal aid, health, language, land management, youth, family support, parenting programs, counselling service, cultural heritage programs and return of ancestor remains from overseas and Australian institutions.

#### ***Conservation of significant buildings on Chappell, Badger and Babel Islands in the Furneaux Group – Tasmanian Aboriginal Heritage – \$50 712 in 2007***

TCF funding will go towards the preservation of three buildings of historical significance. Mutton bird sheds on Chappell and Babel Islands have fallen into disrepair. The traditional sheds are unsafe and have been replaced by facilities meeting modern health and safety standards.

The sheds will be conserved to enable future generations of Aborigines to appreciate part of their heritage. The Homestead on Badger Island, also known as Bella Beeton's cottage, is one of the few surviving cottages belonging to an Aboriginal family from the 1800s and is of significant cultural interest.

### **Launceston Horticultural Society**

The Launceston Horticultural Society was formed on 4 July 1838 at a meeting convened by Ronald Campbell Gunn and William Henty. Gunn was elected first president and Henty secretary.

This organisation grew out of the great interest in horticulture that the early settlers brought with them and their desire to beautify their surroundings as well as increase food production, a necessity in the colony. During the 1830s informal meetings had been held where exchange of plants, seeds and cuttings took place. The Society holds regular meetings, flower shows, and garden visits.

#### ***Ronald Campbell Gunn memorial – \$28 000 in 2005***

Ronald Campbell Gunn was a superintendent of convicts in parts of Tasmania in the 1830s, police magistrate, private secretary to Sir John Franklin and clerk of the executive and legislative council. He was also a renowned general scientist, making collections of birds, reptiles and mollusca for the British Museum.

He is perhaps best known for his work as an energetic botanist, collecting samples of many Tasmanian plants. He also established a private botanic garden in Glen Dhu, Launceston. His contribution to botany is commemorated in Joseph Hooker's introduction to *Flora Tasmaniae* (1860).

Originally more than 50 species of Tasmanian plants contained Gunn's name. In 1854 Gunn became the first Tasmanian to be elected a Fellow of the Royal Society of London. The Society erected a statue in the Launceston City Park in recognition of his contribution to Tasmania.



*The bronze statue of Ronald Gunn in Launceston City Park.*

### **Tasmanian Centre for Global Learning Inc – \$149 176**

To create school-based and statewide support structures that ensure the sustainability of ruMAD? as the pre-eminent social justice education program in Tasmania, with a focus on support for high-need schools.

### **Tasmanians with Disabilities Inc – \$34 620**

To purchase various equipment for use in the training and information centre to enable delivery of complete and efficient disability awareness training workshops and forums.

### **Uniting Church Bridgewater & Gagebrook – \$40 000**

To extend the Op Shop by building a new display to free current display for storage and current storage area for community classes and meetings.

### **Warrane Mornington Neighbourhood Centre Inc – \$100 000**

To purchase a vehicle and to recruit a youth worker to assist with the delivery of on-the-job training for youth at risk in the training opportunities and options for learning (TOOL) program.

### **Wildcare Inc (Derwent Avenue Group – DAG) – \$21 000**

To extend an existing coastal walking track in a public reserve in Margate to enhance and extend community facilities.

### **Wooden Boat Guild of Tasmania Inc – \$25 000**

To restore the yacht Terra Linna (circa 1880) to sailing condition for the broader community of Tasmania to experience.



*Audience members enjoying The Jazz Lounge in February 2008 held in The Barn. (Photo courtesy David Bellamy; Clarence City Council).*

### **Clarence City Council – The Barn, Rosny**

The Barn is a unique small to medium-scale visual and performing arts space which can host concerts, performances, lectures, exhibitions and workshops. The cleverly designed architectural conversion has retained the historic character of this lovely early stone barn forming an impressive setting for events and exhibitions.

It is thought that the barn was built around 1818, possibly by Richard Morgan, ex-Norfolk Island convict, who was farming here at the time. The main use of the barn was to store hay and grain. Over the years the Barn fell into disrepair until in 1988 Clarence City Council began the huge task of conserving this significant historical site.

### ***Redevelop the Barn – \$159 631 in 2004 Promotion and Conservation of Tasmania's Cultural Heritage and 2006***

Through a partnership between Clarence City Council, the Tasmanian Community Fund and the YMCA in 2006, The Barn underwent a transformation to convert it into an exciting new venue fulfilling a need within Clarence for a space for concerts, performances and larger exhibitions.

### **Sound Preservation Association of Tasmania**

The Sound Preservation Association of Tasmania was established in 1985 to collect, catalogue, restore and display recordings, audio equipment, memorabilia, sheet music and other print items related to recorded sound. The collection is housed in the former post office in Bellerive and is open to the public four days weekly. The heart of the collection is 50 000 recordings, ranging from cylinder to compact disc. The collection also includes radios, record players, tape recorders, and broadcast and other equipment.

### ***Tasmanians on disc – \$2 745 in 2006***

The TCF provided \$2 745 in 2005 to enable SPAT to transfer their spoken word collection of 267 audio cassettes and other recordings onto compact disc.

### ***Securing our future – \$2 450 in 2007***

The funding purchased a camera, scanner and mini-disc recorder for SPAT to photograph number and catalogue all display items, reprint an information brochure and provide recording equipment for oral history interviews. Members volunteered their time to undertake the cataloguing.



*Brian Kemp, SPAT member, at the museum in Bellerive.*

## Schedule of Grant Payments – 1 July 2007 to 30 June 2008

Organisation	Amount Received (GST exclusive) \$	Month Paid
Australian Red Cross Society	65 600	July 2007
Australian Rosny Children's Choir	24 700	July 2007
Better Hearing Australia Tasmanian Branch	12 474	July 2007
Circular Head Rural Health Services	72 945	July 2007
Epilepsy Association of Tasmania Inc	12 340	July 2007
Festival of Dreams Inc	40 000	July 2007
George Town Council	22 000	July 2007
Kentish Regional Clinic	41 000	July 2007
Launceston Student Workshop Inc	49 000	July 2007
Lead on Australia	31 727.50	July 2007
Lighthouse Film Society Inc	13 874	July 2007
Live Tasmania	8 248.36	July 2007
Mad Wheels	109 500	July 2007
Mission Australia	94 000	July 2007
Mt Arthur Centre	14 525	July 2007
Nexus Inc	46 100	July 2007
Royal Guide Dogs Association of Tasmania	15 720	July 2007
The Salvation Army Tasmania	35 304	July 2007
The Salvation Army Tasmania	67 000	July 2007
Sexual Assault Support Service	69 183.64	July 2007
Southern Midlands Council	33 500	July 2007
Starlight Children's Foundation	16 440	July 2007
Tasmanian Centre for Global Learning	15 000	July 2007
Tasmanian Polar Network	40 000	July 2007
Tasmanian with Disabilities Inc	37 550	July 2007
The North West Reptile & Creepy Crawley	3 000	July 2007
Volunteer Ambulance Officers	17 283	July 2007
West Tamar Council	10 345	July 2007
Colony 47 Inc	4 656	August 2007
Furneaux Historical Research Association	5 952	August 2007
Glenorchy City Council	29 150	August 2007
Good Beginnings Australia	34 350	August 2007
Good Beginnings Australia	78 430	August 2007
Launceston Birth Centre Inc	2 642	August 2007
Riding for the Disabled Kalang	58 685	August 2007
Tasmanian Association of People with Disabilities	24 367	August 2007
Tasmanian Youth Government Assoc Inc	4 980	August 2007
The Link Youth Health Services Inc	127 600	September 2007
The Salvation Army	49 200	September 2007
Scamander Skatepark Interest Group	5 000	September 2007
TAFE	29 922.50	September 2007
Tasmanian Canine Defence	12 000	September 2007
Tasmanian Centre for Global Learning	35 100	September 2007
Brooks High School	14 150	October 2007
Holyoake Tasmania Inc	47 664.25	October 2007
Source Community Wholefoods	35 980	October 2007
Uniting Care Family Services	31 322	October 2007



## Schedule of Grant Payments – 1 July 2007 to 30 June 2008

Organisation	Amount Received (GST exclusive) \$	Month Paid
Anglicare Tasmania Inc	37 446.36	November 2007
Scout Association of	31 534	November 2007
St Vincent de Paul Society	43 000	November 2007
Colony 47 Inc	112 511	December 2007
Eastcoast Regional Development Organisation	30 000	December 2007
Hobart Repertory Theatre	65 000	December 2007
Tasmanian Conservation Trust	24 100	December 2007
Anglicare Tas Inc	50 000	January 2008
Annie Kenney Young Women's Refuge	10 000	January 2008
Arts Alive Inc	14 000	January 2008
The Association for Christian Homes for the Aged	45 000	January 2008
Australian Volunteer Coast Guard Assoc	4 697	January 2008
The Beacon Foundation	44 500	January 2008
Big hART Inc	45 000	January 2008
Brighton Heritage Association	1 584.35	January 2008
Brighton Heritage Association Incorporated	1 400	January 2008
Campbell Town Area Community Service	12 900	January 2008
The Cancer Council Tasmania	8 730	January 2008
Cerebral Palsy Tasmania	40 000	January 2008
Clarendon Vale Neighbourhood Centre	12 000	January 2008
Devonfield Enterprises	37 872.73	January 2008
Eat Well Tasmania Inc	7 115.25	January 2008
Equestrian Federation	26 500	January 2008
Glamorgan Spring Bay Council	6 050	January 2008
Glamorgan Spring Bay Council	36 000	January 2008
Glenhaven Family Care Inc	16 209	January 2008
Guiding Hand Tasmania Inc	2 030	January 2008
The Historical Society of the Municipality of Sorell	4 350	January 2008
Hobart City Band	3 100	January 2008
Hobart Police & Community Youth Club	51 962	January 2008
Hobart Women's Health Centre	6561.50	January 2008
Interweave Arts Association Inc	42 238.90	January 2008
is theatre ltd	10 468.90	January 2008
Kingborough Gymnastics Committee Inc	94 822	January 2008
Kingston Online Inc	1 668	January 2008
Lifeline North West Tasmania	56 078	January 2008
Menzies Research Institute	38 279	January 2008
Menzies Research Institute	78 000	January 2008
Mersey Natural Resource Management Group Inc	17 900	January 2008
Mersey Natural Resource Management Group Inc	34 436.10	January 2008
Mersey Natural Resource Management Group Inc	34 436.10	January 2008
Mersey Police & Community Youth Club	40 645	January 2008
Montagu Community Living Inc	2 785	January 2008
The Mountain Festival	10 000	January 2008
Mudlark Theatre Inc	5 098.77	January 2008
National Trust of Australia (Tasmania)	29 100	January 2008
Oakdale Services Tasmania	9 640	January 2008

## Schedule of Grant Payments – 1 July 2007 to 30 June 2008

Organisation	Amount Received (GST exclusive) \$	Month Paid
Police & Community Youth Club Launceston	37 124.50	January 2008
Port Sorell Lions Club Inc	10 570	January 2008
Proactive Agricultural Safety and Support	5 000	January 2008
St Vincent de Paul Society	41 542	January 2008
Support Help Empowerment (SHE)	10 000	January 2008
Tasmanian Family History Society Inc	3 395	January 2008
Tasmanian Regional Arts	38 360	January 2008
Tastex Knitwear	41 229.72	January 2008
West Coast Heritage Ltd	47 800	January 2008
Women's Karadi Aboriginal Corporation	14 850	January 2008
Australian Kidney Foundation	2 798.17	February 2008
Beaconsfield Child & Family Centre	48 500	February 2008
Creative Paper Mill Pty Ltd	50 000	February 2008
Fingal Valley Community Sporting Comp	33 000	February 2008
George Town RSL Club	3 500	February 2008
Glamorgan Spring Bay Council	26 000	February 2008
Hobart City Council	35 850	February 2008
Holyoake	47 664.25	February 2008
Launceston Student Workshop Inc	49 000	February 2008
Leprena	27 470	February 2008
Maranoa Heights	7 680	February 2008
Meander Valley Council	12 199	February 2008
Royal Guide Dogs Association of Tasmania	38 000	February 2008
Scouts Australia	5 000	February 2008
Tasmanian Environment Centre	35 980	February 2008
Tasmanian Youth Orchestra	24 430	February 2008
The Salvation Army Tasmania	63 717	February 2008
The Smith Family	33 500	February 2008
Whitelion Inc	26 508	February 2008
Wynyard Community Garden	3 780	February 2008
Australian Red Cross	44 135	March 2008
Tasmanian Regional Arts	26 770	March 2008
Bridgewater Police & Community Youth	34 662.73	April 2008
Festival of Dreams	40 000	April 2008
Pugin Foundation	45 000	April 2008
The Salvation Army Tasmania	50 000	April 2008
About Campbell Town Inc	38 750	May 2008
Bicheno Community Development Association	44 929	May 2008
Central Coast Youth Engaged Steering Committee	43 600	May 2008
The Friends of Musica Viva Tas Inc	72 000	May 2008
National Trust of Australia (Tasmania)	16 600	May 2008
St Giles Society	45 000	May 2008
Tasmanian Aboriginal Land & Sea Council	30 000	June 2008
<b>Total Grants Paid 2007- 08</b>	<b>\$4 340 753.58</b>	

## Financial Statements

### Income statement for the year ended 30 June 2008

	Notes	2008	2007
		\$	\$
<b>Income</b>			
Section 5 receipts	2.1	5 176 000	4 986 000
Section 7 grants – refunds		121 603	156 019
Interest	1.5(a)	638 232	557 270
<b>Total income</b>		<b>5 935 835</b>	<b>5 699 289</b>
<b>Expenses</b>			
Section 7 grants		3 676 250	5 834 888
Administrative services	1.6(a)	146 273	117 935
Advertising		4 521	7 494
Audit fees	3.1	2 300	3 452
Board fees	3.2	118 760	116 034
Other board costs	3.3	25 263	24 178
Consultancy – including media and accountancy	3.4	62 635	28 640
<b>Total expenses</b>		<b>4 036 002</b>	<b>6 132 621</b>
<b>Net operating surplus (deficit)</b>		<b>1 899 833</b>	<b>(433 332)</b>

*This Income Statement should be read in conjunction with the accompanying notes.*

### Balance sheet as at 30 June 2008

	Notes	2008	2007
		\$	\$
<b>Assets</b>			
Cash	6.1	9 396 353	8 070 997
Interest receivable	1.7(b)	58 071	43 109
Tax asset	1.7(c)	2 554	79 169
<b>Total assets</b>		<b>9 456 978</b>	<b>8 193 275</b>
<b>Liabilities</b>			
Grants payable	4.1	34 621	689 327
Other payables	4.2	17 895	5 786
Employee benefits	4.3	19 069	12 602
<b>Total liabilities</b>		<b>71 585</b>	<b>707 715</b>
<b>Net assets (liabilities)</b>		<b>9 385 393</b>	<b>7 485 560</b>
<b>Equity</b>			
Accumulated funds		9 385 393	7 485 560
<b>Total equity</b>	<b>5.1</b>	<b>9 385 393</b>	<b>7 485 560</b>

*This Balance Sheet should be read in conjunction with the accompanying notes.*



## Cash flow statement for the year ended 30 June 2008

	Notes	2008	2007
		\$	\$
<b>CASH FLOW FROM OPERATING ACTIVITIES</b>			
<b>Cash Inflows</b>			
Section 5 receipts		5 176 000	4 986 000
Section 7 grants – refunds		121 603	156 019
Interest received		623 270	554 839
Tax received		455 074	492 730
<b>Cash Outflows</b>			
Section 7 grants		(4 330 956)	(5 301 026)
Administrative services		(139 044)	(118 082)
Advertising		( 4 521)	(7 842)
Audit fees		( 2 202)	(2 000)
Board fees		(118 462)	(115 500)
Other board costs		(24 947)	(24 111)
Consultancy – media and communications		(52 000)	(30 390)
Tax paid		(378 459)	(486 460)
<b>Net cash from (used by) operating activities</b>	<b>6.2</b>	<b>1 325 356</b>	<b>104 177</b>
Net increase (decrease) in cash held		1 325 356	104 177
<b>Cash and cash equivalents at the beginning of the reporting period</b>		<b>8 070 997</b>	<b>7 966 820</b>
<b>Cash and cash equivalents at the end of the reporting period</b>	<b>6.1</b>	<b>9 396 353</b>	<b>8 070 997</b>

*This statement should be read in conjunction with the accompanying notes.*

## Statement of recognised income and expense for the year ended 30 June 2008

	Notes	2008	2007
		\$	\$
<b>Income and expenses recognised directly in equity</b>			
Increase (decrease) in equity		....	....
<b>Net income recognised directly in equity</b>		<b>....</b>	<b>....</b>
Net surplus (deficit) for the financial year		1 899 833	(433 332)
<b>Total recognised income and expense for the financial year</b>		<b>1 899 833</b>	<b>(433 332)</b>
<b>Net effect of the voluntary change in accounting policy</b>	<b>1.4</b>	<b>(6 467)</b>	<b>(649)</b>

*This Statement of Recognised Income and Expense should be read in conjunction with the accompanying notes.*

## Notes to the financial statements for the year ended 30 June 2008

### NOTE 1: STATEMENT OF SIGNIFICANT ACCOUNTING POLICIES

The Tasmanian Community Fund (the Fund) was established under section 33 of the *Trust Bank Sale Act 1999* (repealed) and is continued under section 4 of the *Tasmanian Community Fund Act 2005* (the Act). These Financial Statements cover the period from 1 July 2007 to 30 June 2008.

#### 1.1 Basis of Accounting

Under the provisions of the Act, the Board is required to keep proper accounts and records of its transactions and affairs.

The Financial Statements have been prepared in accordance with Australian Equivalents to International Financial Reporting Standards, and Australian Accounting Standards (including Australian Accounting Interpretations).

The Financial Statements have been prepared on an accrual basis and, except where stated, are in accordance with the historical cost convention. The accounting policies are generally consistent with the previous year except for those changes outlined in Note 1.4 below.

#### 1.2 Purpose

The Fund is used to fund the payment of grants for community purposes. These include grants for community welfare, sporting or recreational, cultural and arts, educational, religious purposes, youth issues, health, environment, regional development and economic development and employment.

#### 1.3 Functional and Presentation Currency

These Financial Statements are presented in Australian dollars, which is the Fund's functional currency.

#### 1.4 Changes in Accounting Policies

##### (a) Voluntary changes in accounting policy

The Fund has adopted new accounting policies in relation to recognising employee benefits. The impact of the changes has been adjusted in the comparative information presented in the financial statements and associated notes.

The change in accounting policy results in the presentation of more relevant and reliable information because it recognises employee benefits that are to be paid in the future as well as employee benefit costs that are consumed throughout financial year.

The effect of the voluntary change in accounting policy is as follows.

	2008 \$	2007 \$
<b>Income Statement</b>		
Net operating surplus (deficit)	1 906 301	(432 683)
Administrative services	(6 467)	(649)
<b>Net operating surplus (deficit) including expected impact</b>	<b>1 899 833</b>	<b>(433 332)</b>
<b>Balance Sheet</b>		
Net assets (liabilities)	9 404 462	7 498 162
Employee benefits	(19 069)	(12 602)
<b>Net assets (liabilities) including expected impact</b>	<b>9 385 393</b>	<b>7 485 560</b>

#### 1.5 Income

Income is recognised in the Income Statement when an increase in future economic benefits related to an increase in an asset or a decrease of a liability has arisen that can be measured reliably.

##### (a) Interest

Interest is brought to account, where possible, on an accrual basis, otherwise as it is received.

#### 1.6 Expenses

Expenses are recognised in the Income Statement when a decrease in future economic benefits related to a decrease in an asset or an increase of a liability has arisen that can be measured reliably.

##### (a) Administrative Services

The Board may make arrangements with the Secretary of the Department of Treasury and Finance for persons employed in the Department to be made available to the Board to enable it to perform its functions. The cost of administrative services includes salaries and wages, payroll tax, superannuation and travel costs of staff available to the Board from the Department.

##### (b) Board Fees

A member of the Board is to be paid such remuneration, expenses and allowances as the Governor may determine.

## **1.7 Assets**

Assets are recognised in the Balance Sheet when it is probable that the future economic benefits will flow to the Fund and the asset has a cost or value that can be measured reliably.

### **(a) Cash and Deposits**

Cash means notes, coins, any deposits held at call with a bank or financial institution, as well as funds held in the Special Deposit and Trust Fund. Deposits are recognised at their nominal amounts.

### **(b) Receivables**

Receivables are recognised at amortised cost, less any impairment losses, however, due to the short settlement period, receivables are not discounted back to their present value.

### **(c) Tax Assets**

Tax assets are the input tax credits receivable from the Australian Government and are recognised at the amount receivable.

## **1.8 Liabilities**

Liabilities are recognised in the Balance Sheet when it is probable that an outflow of resources embodying economic benefits will result from the settlement of a present obligation and the amount at which the settlement will take place can be measured reliably.

### **(a) Payables**

Payables, including goods received and services incurred but not yet invoiced, are recognised at amortised cost, which due to the short settlement period, equates to face value, when the Fund becomes obliged to make future payments as a result of a purchase of assets or services.

### **(b) Employee Benefits**

Liabilities for wages and salaries and annual leave are recognised when an employee becomes entitled to receive a benefit. Those liabilities expected to be realised within 12 months are measured as the amount expected to be paid. Other employee entitlements are measured as the present value of the benefit at 30 June 2008, where the impact of discounting is material, and at the amount expected to be paid if discounting is not material.

A liability for long service leave is recognised, and is measured as the present value of expected future payments to be made in respect of services provided by employees up to the reporting date.

## **1.9 Taxation**

The Fund is exempt from all forms of taxation except Fringe Benefits Tax, Payroll Tax and the Goods and Services Tax (GST).

In the Cash Flow Statement, the GST component of cash flows arising from investing or financing activities which is recoverable from, or payable to, the Australian Taxation Office is, in accordance with the Australian Accounting Standards, classified as operating cash flows.

## **1.10 Comparative Figures**

Comparative figures have been adjusted to reflect any changes in accounting policy or the adoption of new standards. Details of the impact of changes in accounting policy on comparative figures are at Note 1.4.

## **1.11 Rounding**

All amounts in the Financial Statements have been rounded to the nearest whole dollar, unless otherwise stated.





## NOTE 2: INCOME

### 2.1 Section 5 Receipts

In accordance with section 5 of the Act, the Fund receives an annual appropriation through the State Budget. This funding is provided from the Consolidated Fund and is a Reserved by Law appropriation, in accordance with the provisions of the Act.

	2008	2007
	\$	\$
Section 5 Receipts	5 176 000	4 986 000
<b>Total</b>	<b>5 176 000</b>	<b>4 986 000</b>

## NOTE 3: EXPENSES

### 3.1 Audit Fees

	2008	2007
	\$	\$
Audit fees – financial audit	2 300	3 452
<b>Total</b>	<b>2 300</b>	<b>3 452</b>

The Fund's financial statements are audited by the Tasmanian Audit Office.

### 3.2 Board Fees

The Tasmanian Community Fund Board was appointed on 26 July 2000

Board Members	2008	2007
	\$	\$
Gerald Loughran – Chairman	29 576	28 875
Fiona Calvert	17 745	17 325
Catherine Fernon	17 745	17 325
Andrew Kemp*	8 092	17 325
Lynn Mason*	17 745	4 807
Kevin Preece*	....	12 518
Joan Walters	17 745	17 325
Ronald Sanderson*	9 649	....
<b>Total</b>	<b>118 297</b>	<b>115 500</b>

\*Kevin Preece's appointment ceased on 18 March 2007 and Lynn Mason was appointed on 19 March 2007. Andrew Kemp's appointment ceased on 14 December 2007 and Ronald Sanderson was appointed on 15 December 2007.

The figure for board fees in the Income Statement may vary to the total of remuneration paid to board members (above) due to timing of pay periods and accrual of board fees to 30 June 2008.

### 3.3 Other Board Costs

These are costs associated with Board members' superannuation, payroll tax and travelling expenses.

### 3.4 Consultancy Expenses

	2008	2007
	\$	\$
Media and Communications	29 035	28 640
Accountancy	25 600	....
Other	8 000	....
<b>Total</b>	<b>62 635</b>	<b>28 640</b>

During 2007-08, the Fund engaged Deloitte Touche Tohmatsu to undertake audits of recipients of grants greater than \$10 000.

#### NOTE 4: LIABILITIES

##### 4.1 Grants Payable

Grants payable represent grants approved by the Board during 2007-08, for which a signed grant deed has been returned by the recipient and which has no unfulfilled conditions attached, but which had not been processed for payment by 30 June 2008. These grants were paid in the first week of July 2008.

	2008	2007
	\$	\$
Grants Payable	34 621	689 327
<b>Total</b>	<b>34 621</b>	<b>689 327</b>

##### 4.2 Other Payables

	2008	2007
	\$	\$
Creditors	2 785	1 750
Accrued Expenses	15 110	4 036
Total	17 895	5 786
Due within 12 months	17 895	5 786
Due in more than 12 months	....	....
<b>Total</b>	<b>17 895</b>	<b>5 786</b>

##### 4.3 Employee Benefits

	2008	2007
	\$	\$
Annual Leave	10 013	7 060
Long Service Leave	9 056	5 542
Total	19 069	12 602
Due within 12 months	10 013	7 060
Due in more than 12 months	9 056	5 542
<b>Total</b>	<b>19 069</b>	<b>12 602</b>

#### NOTE 5: EQUITY AND MOVEMENTS IN EQUITY

##### 5.1 Reconciliation of Equity

	Accumulated Funds		Total Equity	
	2008	2007	2008	2007
	\$	\$	\$	\$
Balance at 1 July	485 560	7 918 892	7 485 560	7 918 892
Net surplus/deficit	1 899 833	(433 332)	1 899 833	(433 332)
<b>Balance at 30 June</b>	<b>9 385 393</b>	<b>7 485 560</b>	<b>9 385 393</b>	<b>7 485 560</b>

## NOTE 6: CASH FLOW RECONCILIATION

### 6.1 Cash and Cash Equivalents

Cash at the end of the financial year as shown in the Cash Flow Statement is reconciled to the related items in the Balance Sheet as follows:

	2008	2007
	\$	\$
GST advance	(2 554)	(79 169)
At call deposits with financial institutions	9 398 907	8 150 166
	<b>9 396 353</b>	<b>8 070 997</b>

### 6.2 Reconciliation of Net Operating Surplus with Net Cash from Operating Activities

	2008	2007
	\$	\$
Net operating surplus	1,899,833	(433 332)
Decrease (increase) in interest receivable	(14,962)	(2 432)
Decrease (increase) in tax asset	76,615	6 268
(Decrease) increase in grants payable	(654,706)	533 862
(Decrease) increase in other payables	12,109	(838)
(Decrease) increase in employee benefits	6,467	649
<b>Net cash from (used by) operating activities</b>	<b>1 325 356</b>	<b>104 177</b>

## NOTE 7: CONTINGENT LIABILITIES

Quantifiable contingent liabilities as at 30 June 2008 are the grants approved in principle by the Board but which are awaiting certain conditions to be met by the grant recipient before the grant deed can be executed. The maximum exposure of the quantifiable contingent liabilities of the Fund as at 30 June 2008 is \$3 639 688.25. As the grant conditions are met, these grants will be funded from the retained revenues of the Fund.

## CERTIFICATION OF FINANCIAL STATEMENTS

The accompanying financial statements of the Tasmanian Community Fund Board are in agreement with the relevant accounts and records and have been prepared in compliance with Australian Accounting Standards (including the Australian Accounting Interpretations) and the Tasmanian Community Fund Act 2005, to present fairly the financial transactions for the year ended 30 June 2008 and the financial position as at 30 June 2008.

At the date of signing, I am not aware of any circumstances which would render the particulars included in the financial statements misleading or inaccurate.



**Gerald Loughran**  
**CHAIRMAN**  
**TASMANIAN COMMUNITY FUND BOARD**  
**August 2008**



## General Grant Rounds

Grant Round	Amount Allocated	No of projects	Financial year
1	\$1,585,430	49	2000-01
2	\$1,659,919	48	2000-01
3	\$1,610,429	45	2001-02
4	\$1,549,353	36	2001-02
5	\$1,872,110	56	2002-03
6	\$2,318,964	50	2002-03
7	\$1,800,252	52	2003-04
8	\$1,941,258	72	2003-04
9	\$2,054,995	76	2004-05
10	\$1,950,415	62	2004-05
11	\$2,565,950	68	2005-06
12	\$2,097,601	69	2005-06
13	\$2,386,302	76	2006-07
14	\$2,459,814	62	2006-07
15	\$2,392,705	64	2007-08
16	\$1,961,226	51	2007-08
<b>TOTAL</b>	<b>\$32,206,723</b>	<b>936</b>	

## Targeted Initiatives

Grant Round	Amount Allocated	No of projects	Financial year
Early Childhood Intervention	\$1,017,294	3	2003-04
Tasmanian Cultural Heritage	\$1,980,883	31	2005-06
Tasmanian Aboriginal Heritage	\$287,679	7	2006-07
<b>TOTAL</b>	<b>\$3,279,856</b>	<b>41</b>	

## Number of grants – by funding range

Funding Range	Number of Grants	% Grants Allocated	Cumulative %
\$10,000 or less	309	33	33
\$10 001 – \$25,000	246	26	59
\$25 001 – \$50,000	197	21	80
\$50,001 – \$75,000	76	8	88
\$75 001 – \$100,000	57	6	94
\$100 001 – \$150,000	24	3	97
\$150,001 – \$200,000	19	2	99
Over \$200,000	8	1	100
<b>TOTAL</b>	<b>936</b>		

*Note: The table does not include the 41 grants awarded in our three targeted initiatives round.*



## INDEPENDENT AUDIT REPORT

To Members of the Parliament of Tasmania

### TASMANIAN COMMUNITY FUND

Financial Statements for the Year Ended 30 June 2008

#### Report on the Financial Statements

I have audited the accompanying financial statements of the Tasmanian Community Fund, which comprises the balance sheet as at 30 June 2008, the income statement, statement of recognised income and expense and cash flow statement for the year ended on that date, a summary of significant accounting policies, other explanatory notes and the statement from the Chairman.

#### *The Responsibility of the Board for the Financial Statements*

The Board is responsible for the preparation and fair presentation of the financial statements in accordance with Australian Accounting Standards (including the Australian Accounting Interpretations) and the *Tasmanian Community Fund Act 2005*. This responsibility includes establishing and maintaining internal controls relevant to the preparation and fair presentation of the financial statements that is free from material misstatement, whether due to fraud or error; selecting and applying appropriate accounting policies; and making accounting estimates that are reasonable in the circumstances.

#### *Auditor's Responsibility*

My responsibility is to express an opinion on the financial statements based upon my audit. My audit was conducted in accordance with Australian Auditing Standards. These Auditing Standards require that I comply with relevant ethical requirements relating to audit engagements and plan and perform the audit to obtain reasonable assurance as to whether the financial statements are free of material misstatement.

An audit involves performing procedures to obtain audit evidence about the amounts and disclosures in the financial statements. The procedures selected depend on the auditor's judgement, including the assessment of risks of material misstatement of the financial statements, whether due to fraud or error. In making those risk assessments, the auditor considers internal control relevant to the Board's preparation and fair presentation of the financial statements in order to design audit procedures that are appropriate to the circumstances, but not for the purpose of expressing an opinion on the effectiveness of internal control. An audit also includes evaluating the appropriateness of accounting policies used and the

reasonableness of accounting estimates made by the Board, as well as evaluating the overall presentation of the financial statements.

I believe that the audit evidence I have obtained is sufficient and appropriate to provide a basis for my audit opinion.

### **Independence**

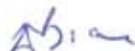
In conducting my audit, I have met applicable independence requirements of Australian professional ethical pronouncements.

### **Auditor's Opinion**

In my opinion the financial statements of the Tasmanian Community Fund:

- (a) present fairly, in all material respects, the financial position of the Fund as at 30 June 2008, and of its financial performance, cash flows and changes in equity for the year then ended; and
- (b) are in accordance with the Australian Accounting Standards (including Australian Accounting Interpretations).

### **TASMANIAN AUDIT OFFICE**



H M Blake  
**AUDITOR-GENERAL**

HOBART  
7 October 2008





## Tasmanian Symphony Orchestra

The Tasmanian Symphony Orchestra was established in 1948 as a result of a partnership between the State Government, the Hobart and Launceston City Councils and the then Australian Broadcasting Commission. It is widely recognised as one of the world's finest small orchestras.

Since its inception, the orchestra has regularly toured regional Tasmania. Over the past 20 years, it has played frequently on the mainland and has toured internationally on several occasions. The TSO's music appears on major recording labels.

The TSO also plays regularly at a wide variety of community events around the State and TSO members form an integral part of the Tasmanian arts community, participating in teaching, performance and new music activities in addition to their orchestral responsibilities.

### ***Celeste – \$16 000 in 2003***

The TCF contributed to the purchase of a new five-octave standard celeste, a percussion keyboard instrument. Other contributions were also received from orchestra supporters.

### ***Tubular Bells – \$10 000 in 2004***

The grant was a contribution toward a set of tubular bells and Adams philharmonic chimes. Other contributions were also received from orchestra supporters.

### ***Music Library – \$16 502 in 2005***

The grant was used to purchase music, music scores, CDs, music folders and storage boxes to enable the TSO to have its own music library, rather than hiring items from other orchestras.

### ***Glockenspiel – \$5 585 in 2006***

The TSO contributed towards the purchase of a new glockenspiel, with other donations also received.

*TSO's Gary Wain  
with the glockenspiel.*



**Tasmanian  
Community Fund**

*Making a difference*